

**PIECES DE RECHANGE**

**SCHAUBLIN 70**

---

---

SCHAUBLIN 70

# INSTRUCTION DE SERVICE

A remettre à la personne chargée de la conduite de la machine.

# SERVICE INSTRUCTIONS

To be handed to the operator in of the machine.

# BETRIEBSANWEISUNG

Diese Anweisung ist für die Maschine bedienende Person bestimmt.

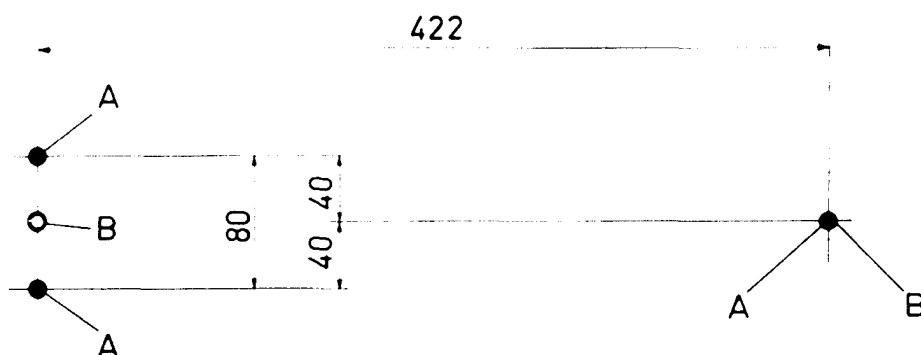
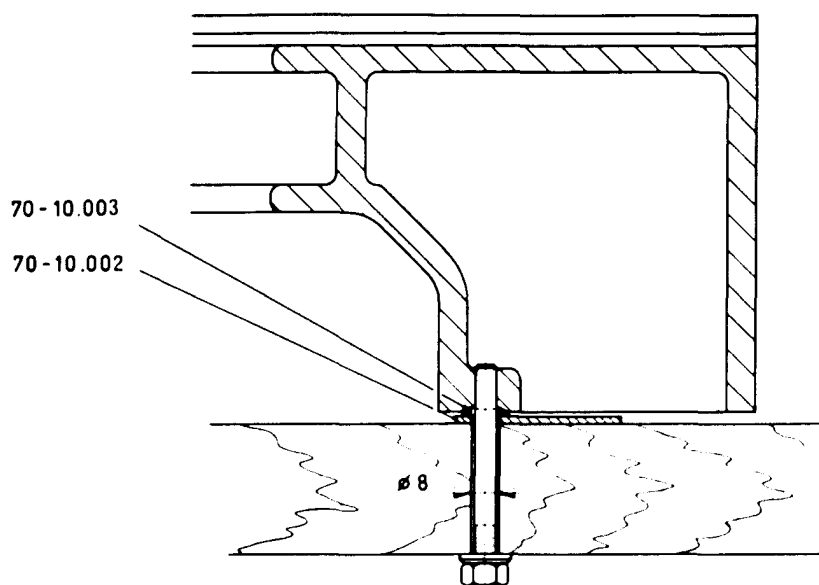
Machine SCHAUBLIN type : ..70-T0.....  
Machine / Maschine N° : .....  
BL N° : .....  
Tension /Spannung Volts : .....

---

FABRIQUE DE MACHINES SCHAUBLIN S.A. BÉVILARD/SUISSE

---

## FITTING INSTRUCTIONS FOR BED OF SCHAUBLIN 70 LATHE



Bed of SCHAUBLIN 70 bench-type lathe is planed and scraped with extreme accuracy and must therefore not be fixed on uneven surface.

The bed has three bearing points «A» and two fixation holes «B» as shown on the above sketch. Three special washers 70-10.003 put at the bearing points eliminate any distortion which may be caused by unlevelled benches. The bed is to be fixed with two stud-bolts.

To prevent the special washers from penetrating in the wood, put steel plate 70-10.002 between bedfoot and bench as per sketch. These plates are supplied with the bed. After fitting, check if a thickness of a small rule is guaranteed between bedfoot and steel plate.

It is evident that a wooden bench does not offer absolute stability. Thanks to its outstanding conception, only our cast-iron cabinet guarantees a perfect base for the lathe. Therefore, check the bed position periodically and re-adjust if necessary.

**blank**

**HEADSTOCK W12 WITH PLAIN BEARINGS (Open design)**

Type 70-32 with hand-operated drawbar

Type 70-32L with lever-operated quick-closing

Lubrication by capillary action (an oil reservoir on each bearing) or oil mist

For standard speed range

SPECIFICATION	Item N°	70-32	70-32L
Thread on spindle nose		Ø 22,6 x 2 mm (.890 x .079")	
Length of thread on spindle nose		10 mm	(.25/64")
Cylindrical seat of spindle nose		Ø 23 mm	(.905")
Spindle bore		Ø 12 mm	(.15/32")
Maximum bore through standard collet		Ø 8,2 mm	(.21/64")
Internal taper of spindle		15°	
Width of pulley steps		19 mm	(.748")
Diameter of pulley steps		Ø 46/62/78 mm (1 3/4 - 2 1/2 - 3")	
Weight in kg (lbs)		5.300 (11.680)	6.700 (14.770)

**MAINTENANCE**

**A. CLEANING ON RECEIPT**

All external and internal parts are given a coat of anti-rust grease prior to despatch.

This grease has no lubricating property. Its presence may cause serious seizures, even several weeks after the machine has been put into service. Clean the entire unit with a chemically neutral white cloth (free of acid or chlorine) soaked in paraffin. Avoid using alcohol or petrol (which often contains alcohol) or any organic product that would dissolve the cellulose paint.

**B. LUBRICATION OF BEARINGS (applicable only to lubrication by capillary action)**

The oil which is contained in reservoirs, rises to the top of the tubes by capillary action and then drips on to the bearings, thus ensuring constant lubrication. Fill the reservoirs to within 4 mm (5/32") of the top once a day.

Never pour the oil direct into the tubes, as too great a flow can cause harmful overheating of the bearings.

Above all avoid using grease!

Use preferably a good mineral oil with a viscosity of about 3°E at 50°C (122°F)

Note : Headstocks lubricated by oil mist require no other form of lubrication.

### C. LEVER-OPERATED QUICK-CLOSING ATTACHMENT

The fulcrum pin of the lever (70-P-201) is provided with a lubrication nipple. Once a week, give a few shots of oil to this point.

Oil also the dogs (70-P-208) first unscrewing and removing the drawbar through the sleeve (70-P-210).

The bearing (ND 993-L06) is prepacked with grease. (For the grade of oil recommended, see ING 57-1).

### ADJUSTMENT OF THE SPINDLE BEARINGS

The two bearings are carefully adjusted during assembly of the headstock. No subsequent adjustment is necessary until after a relatively long period of running. Only a skilled person should be permitted to make the adjustments described below, as they call for the greatest possible care.

#### A. TAKING UP RADIAL AND AXIAL PLAY IN THE FRONT BEARING

1. Determine the exact amount of radial play by means of a comparator reading to within  $1/1000$  mm (.00004").
2. Remove the spindle in accordance with the following instructions :
  - a) Remove the drawbar (70-32.022) and, in general, everything mounted on the spindle : collet, faceplate, a.s.o...
  - b) Unscrew the screw (70-32.020).
  - c) Unscrew the dust cap (70-32.027) and push it back into the recess provided in the pulley for this purpose.
  - d) Loosen the 2 screws (D M5x4) in the nut (70-32.011) and completely unscrew the nut.
  - e) Withdraw the spindle completely by striking the rear end with a fibre hammer.  
Note : During this operation, it is very important to support the spindle at the front in order to keep it centred, on account of the taper front bearing.
  - f) Remove the needle thrust bearing (Nadella Ax-5-2542).

There are now two ways of taking up the play :

#### A1. TAKING UP RADIAL AND AXIAL PLAY BY CHANGING THE NEEDLE THRUST BEARING (NADELLA Ax-5-2542)

Replace the needle thrust bearing by one of the same type, but of less thickness, and scrape the taper bore of the bearing (70-32.008) as necessary.

#### A2. TAKING UP RADIAL AND AXIAL PLAY BY SCRAPING THE FRONT FACE OF THE BEARING (70-32.008)

To take up  $1/1000$  mm (.00004") radial play, the front face of the bearing (70-32.008) must be machined  $9.5/1000$  mm (.000374"). Therefore, to determine the thickness of metal to be removed from the face, all that is necessary is to measure the amount of play to be taken up.

1. Measure the amount of play to be taken up by means of a comparator reading to within 1/1000 mm (.00004'').
2. Remove the ring (70-32.013) to expose the front face of the bearing.
3. Remove also the ring (70-32.014).
4. Scrape the front face of the bearing with an appropriate tool until the radial play required, i.e. .005 to .007 mm (.00020 to .00028''), is obtained.
5. Check also the axial play, which must be .008 to .010 mm (.00031 to .00039''). To obtain this result, it is necessary to machine the taper bore of the bearing.

Note : This delicate work necessitates expensive special equipment. Customers who do not possess such equipment are therefore advised to return the headstock to us for adjustment rather than to undertake the work themselves.

#### B. TAKING UP RADIAL AND AXIAL PLAY IN THE REAR BEARING

1. Measure the amount of radial play by means of a comparator reading to within 1/1000 mm (.00004'').
2. Unscrew the nut (70-32.007).
3. Take out the taper bearing (70-32.004). Remove the metal strip placed in one slot of the bearing.
4. Reduce the thickness of this strip taking care to measure it perfectly.
5. Machine the bore of the bearing (70-32.004) in order to allow, after refitting, the spindle to run freely with a radial play of .005 to .007 mm (.00020 to .00028'').

#### SPINDLE - LOCKING DEVICE

The piston (70-32.016) can be inserted into any of the holes in the side of pulley (70-32.026), thus allowing the spindle to be locked, by means of the knurled knob (70-31.015), as and when required.

#### LEVER - OPERATED QUICK - CLOSING ATTACHMENT

##### A. FITTING AND OPERATION

The bush (70-P-207) of the quick-closing attachment is mounted on the end of the headstock spindle and locked by a key.

The support (70-30.603) is fixed to the frame of the headstock by means of 3 screws (CCM M6x20). By pushing the lever (70-P-201) to the left, its nose should locate against the screw (DCMB M6x25). If it is not the case, unlock the nut (M6) and adjust the screw (DCMB M6x25).

To clamp the workpiece, pull the lever (70-P-201) to the right (towards you).

To unclamp the workpiece, push the lever to the left.

## B. ADJUSTMENT

1. Pull the lever (70-P-201) towards you.
2. Mount the collet in the spindle together with the workpiece.
3. Clamp the workpiece lightly by screwing up the sleeve (70-P-210).
4. Push the lever (70-P-201) to the left and make the final adjustment of the closing with the sleeve (70-P-210).  
The sleeve (70-P-210) is automatically locked in all its positions by two spring loaded pistons (70-P-214).

## C. REPLACEMENT OF THE CLAMPING DOGS

When replacing the clamping dogs (70-P-208), it is essential to fit two parts of the same number. To replace, proceed as follows :

1. Take out the drawbar completely, together with the sleeve (70-P-210).
2. Release the (Truarc 5103-112) circlip and withdraw the bush (70-P-213) about 1 cm (1/2") in order to be able to free the two dogs from the slot in the bush. Be careful not to withdraw the bush (70-P-213) too far, otherwise the springs of the pistons (70-P-214) may get lost.
3. Place the new dogs in position.
4. Secure the (Truarc 5103-112) circlip and refit the drawbar.

## D. MOUNTING THE LEVER-OPERATED QUICK-CLOSING ATTACHMENT (70-P-200) ON THE STANDARD DRAWBAR-OPERATED HEADSTOCK (70-32).

Conversion of the drawbar-operated headstock (70-32) into a headstock (70-32L) with a quick-closing lever can be carried out any time, without difficulty, by a skilled person.

### Cleaning on receipt

The lever-operated quick-closing attachment is supplied completely assembled. It is given a coat of special anti-rust grease prior to despatch. This must be completely removed before the attachment is used, as it has no lubricating property.

### Fitting

1. Take out the drawbar (70-32.022) with the handwheel (70-P-60a). The drawbar cannot be used for quick-closing.
2. Place the flat key (70-21.874) in the seating provided on the headstock.
3. Place the flat key (65-P-67) in the setting provided on the spindle (70-32.003).
4. Fit the quick-closing attachment, inserting the drawbar (70-30.602) into the spindle.  
See that the flat key (65-P-67) enters the slot in the sleeve (70-P-207).
5. Place the support (70-30.603) against the frame of the headstock and put the 3 screws (CCM M6x20) in position, tightening them slightly.
6. Run the machine at a reduced speed and adjust the eccentric screws (70-P-206) of the lever (70-P-201) until the sleeve (70-P-205) is immobilized in the vertical plane.  
(Note : Any distortion in the sleeve (70-P-205), however slight, can cause very rapid wear in the bearing (ND 993-L06).
7. On completion of the adjustment, lock the 3 screws (CCM M6x20) securely.
8. Lubricate the entire attachment (see under «Maintenance of headstock»).

Adjustment (see above).

13.11.64. JPN/MCh





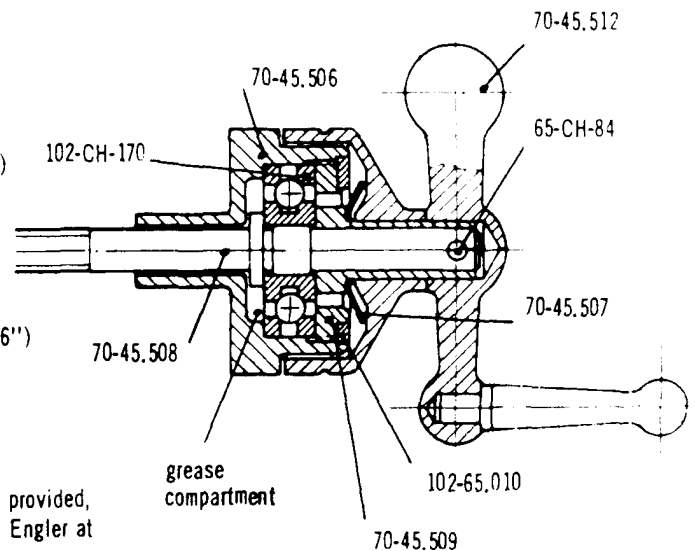
**SCREW - OPERATED CARRIAGE 70-45**  
for **SCHAUBLIN 70 high-precision lathe**  
(suitable also for Schaublin 65 lathe with special toolpost)

**ADVANTAGES**

1. Great rigidity and high precision
2. Fully protected slideways with forced-feed lubrication (cleaning action)
3. Micrometer screws supported at both ends; special patented ball bearing at handle end for taking up axial and radial play
4. Patented device for rapid and accurate resetting of swivel base to zero
5. Dovetail on bottom slide for taking and adjustable rear toolholder
6. Harmonious lines and superior finish

**SPECIFICATION**

Longitudinal stroke	60 mm (2 3/8")
Transverse stroke	65 mm (2 9/16")
Accuracy of reading of adjustments	1/100 mm (1/1000")
Top slide swivelling	2 x 90°
Height of centre above carriage	16 mm (5/8")
Swing over carriage	
without rear toolholder	85 mm (3 3/8")
with rear toolholder	45 mm (1 3/4")
Size of tools	8 x 8 mm (5/16 x 5/16")
Net weight	3.4 kg (7.500 lbs.)

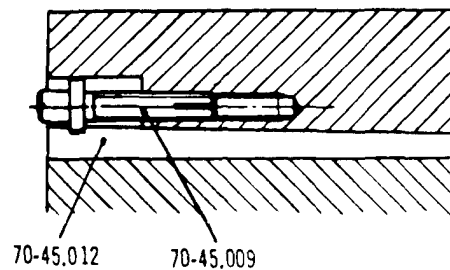
**LUBRICATION****SLIDEWAYS, MICROMETER SCREWS AND NUTS**

Give 4 or 5 shots twice a week through the two nipples provided, using a good light mineral oil with a viscosity of 3° Engler at 50°C.

**BALL BEARING OF MICROMETER SCREWS**

Use a good consistent ball-bearing grease and renew it every 5 years, proceeding as follows :

1. Drive out the taper pin 65-CH-84
2. Withdraw the handle 70-45.512 and the divided drum 70-45.506.
3. Remove the cup spring 70-45.507 and the Seeger clip 102-65.010 and completely unscrew the nut 70-45.509.
4. Remove the ball-bearing ring 102-CH-170 and slightly slacken the screw 70-45.508 in order to be able to fill the compartment with grease. Pack the ball bearing also with grease.

**ADJUSTMENTS****BALL BEARING OF MICROMETER SCREWS**

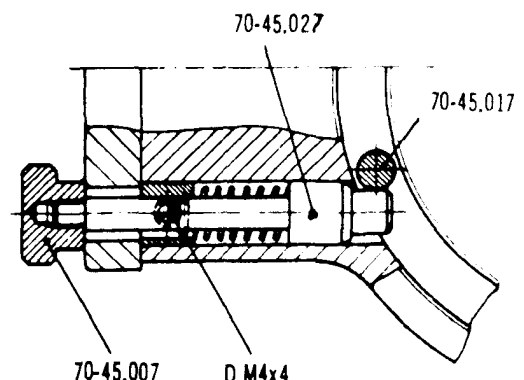
1. Drive out the taper pin 65-CH-84.
2. Withdraw the handle 70-45.512 and the divided drum 70-45.506.
3. Remove the Seeger clip 102-65.010 and tighten the nut 70-45.509 according to the amount of play to be taken up.

**PLAY IN SLIDES**

A taper gib 70-45.012 is fitted to each of the slides. Play caused by wear in the slideways can be taken up by tightening the adjusting screw 70-45.009 as required.

**DEVICE FOR RESETTING SWIVEL BASE TO ZERO**

1. Fix the carriage securely in correct position on the bed.
2. With the aid of a dial indicator, position the top slide exactly at 90°.
3. Unlock the screw D M4 x 4.
4. Turn the knurled knob 70-45.007 until the end of the rod 70-45.027 is resting against the stop 70-45.017 and then retighten the screw D M4 x 4 securely.

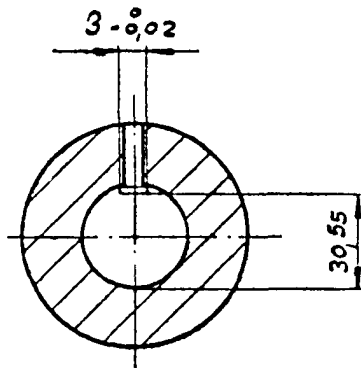


**FABRIQUE DE MACHINES SCHAUPLIN S.A. BÉVILARD/SUISSE**

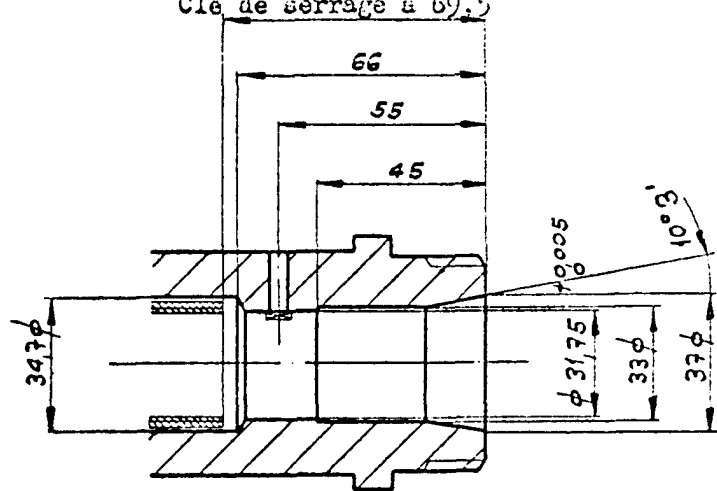
DIMENSIONS NECESSAIRES POUR L'ADAPTATION DE  
LA PINCE SCHAUBLIN TYPE 31,75 W

40-N-94

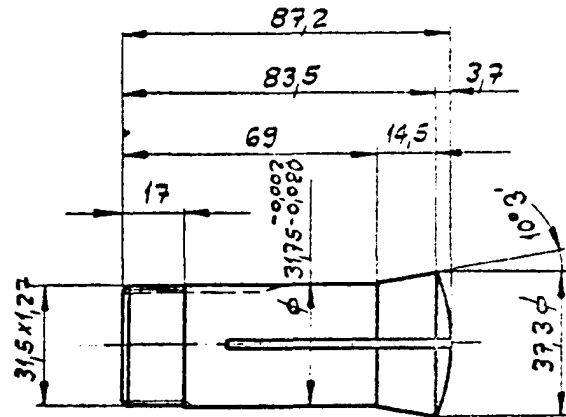
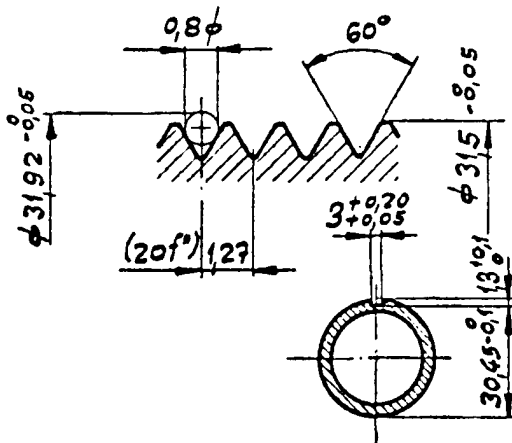
Broche



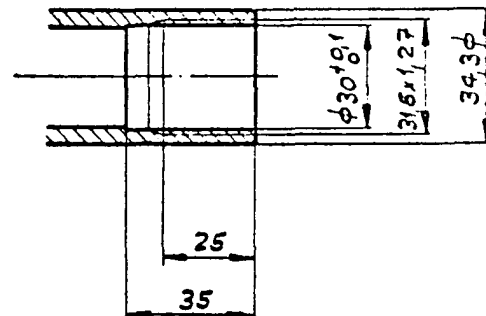
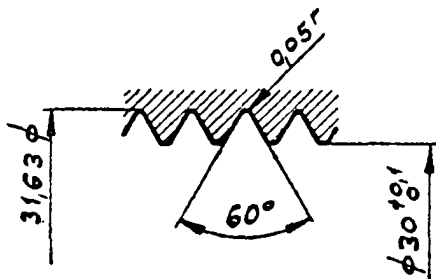
Clé de serrage à 69,5



Pince



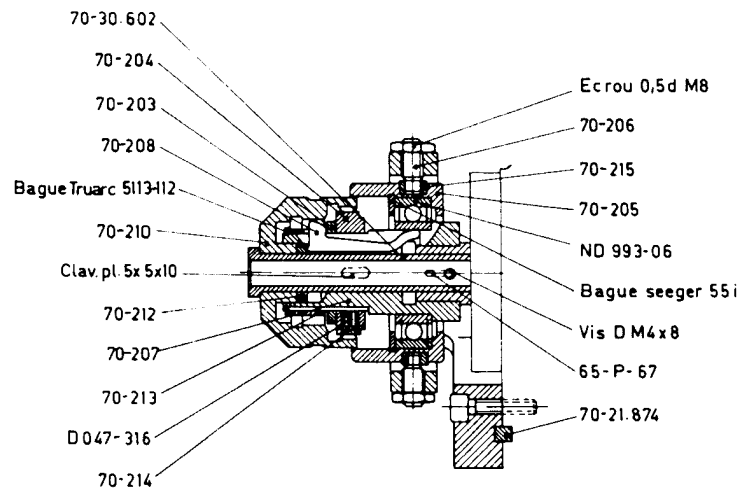
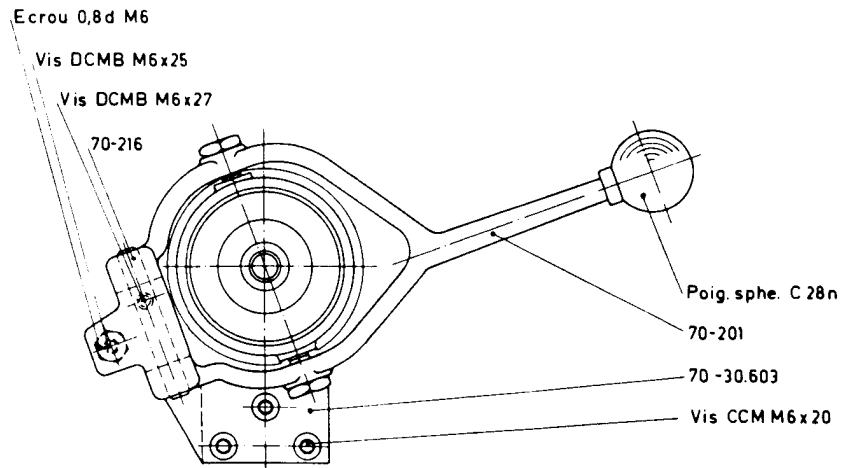
Clé de serrage



7.7.55

**SCHAUBLIN S.A.**  
**BÉVILARD (SUISSE)**






---

**FABRIQUE DE MACHINES SCHAUBLIN S.A. BÉVILARD/SUISSE**

---

vis 7,6 x 14  
65 - 42

Vis Ca 2  
M4 x 10  
70 - 32.015  
70 - 32.016

70 - 25.050

70 - 32.013

70 - 7

70 - 64

46 - 52 AD  
Prisonnier

70 - 32.003

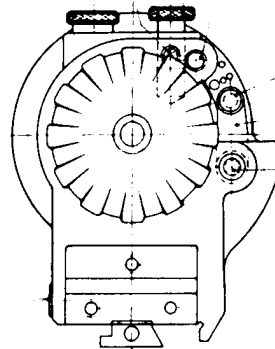
Vis CCM M5 x 15

Butée à aiguilles

"Nadella" Ax 5 - 2542

70 - 34.451

2) 65 - P - 45

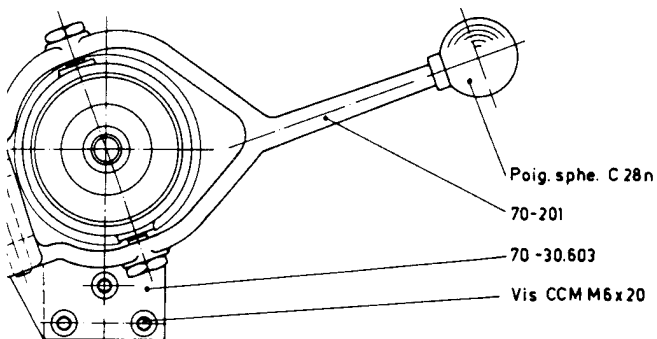


70 - 32.017

70 - 32.019

70 - 32.018

x25  
M6 x 27



Poig. sphe. C 28n

70-201

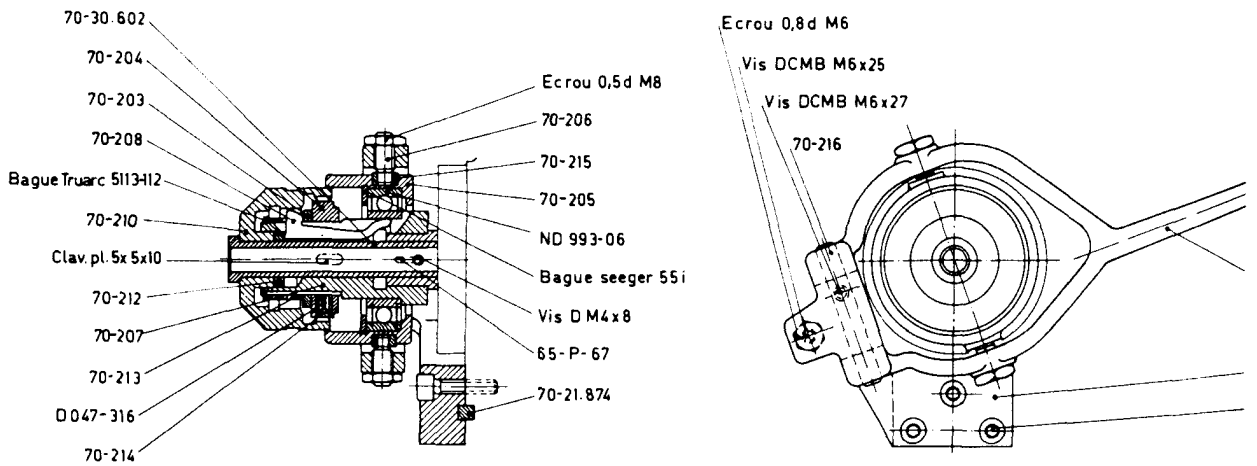
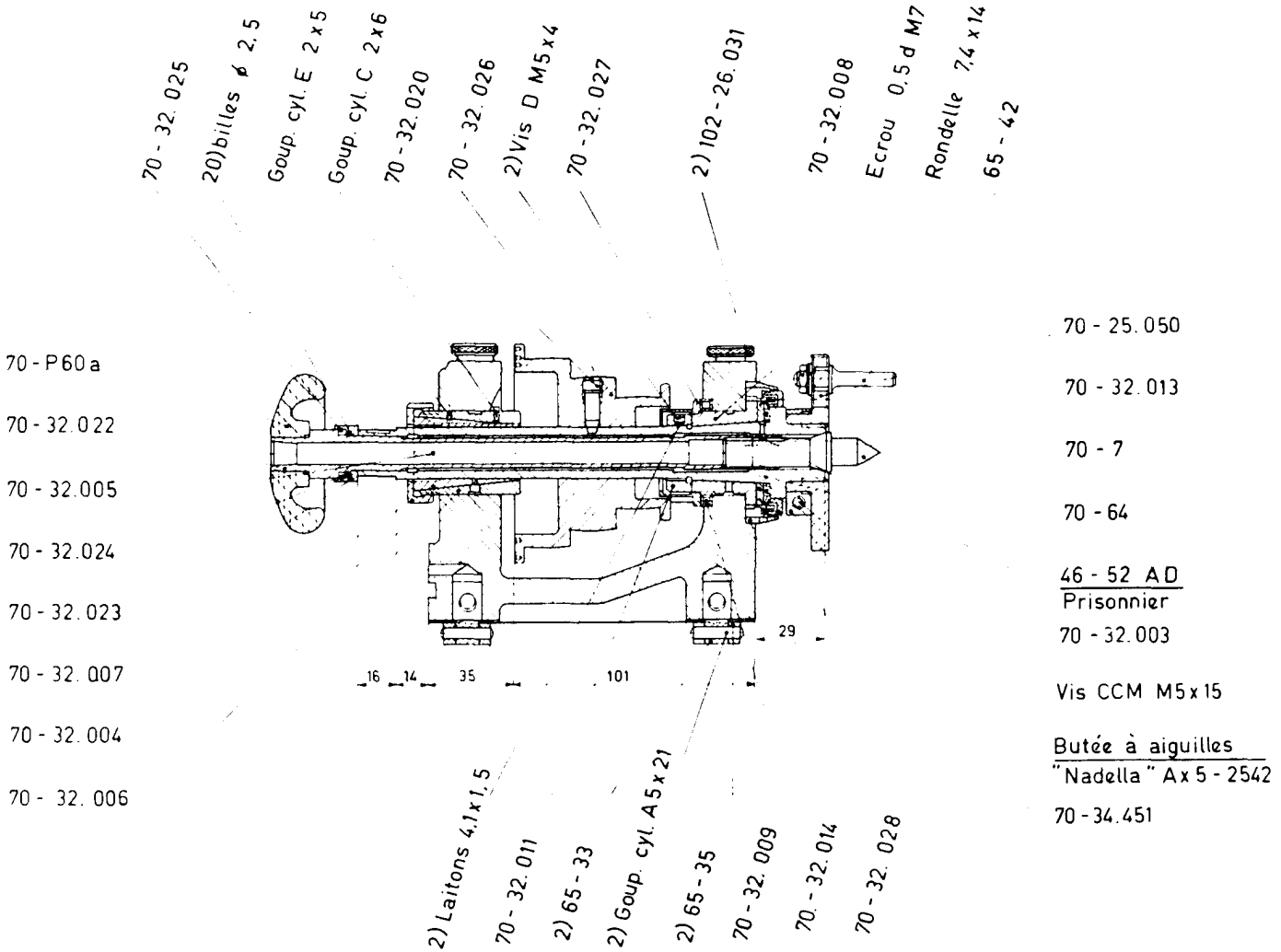
70-30.603

Vis CCM M6 x 20

**Poupée W12 à paliers lisses  
(exécution ouverte)**

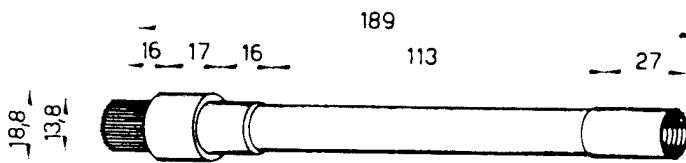
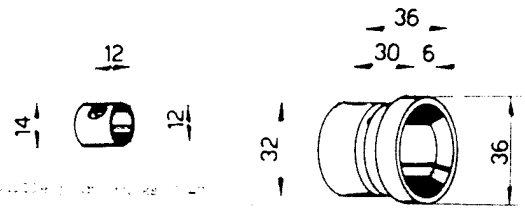
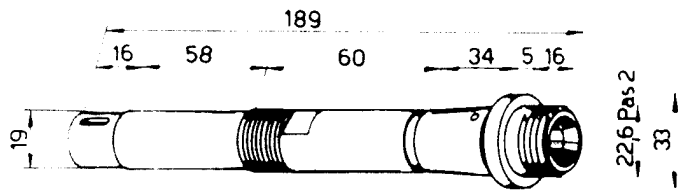
**avec serrage par clé  
Art. N° 70-32 ou**

**avec serrage rapide par  
levier à main  
Art. N° 70-32L**

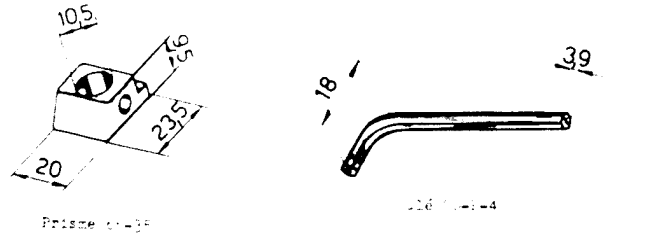
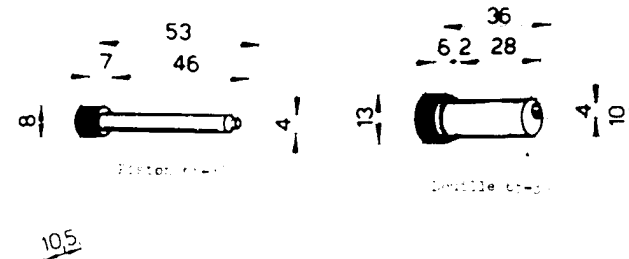
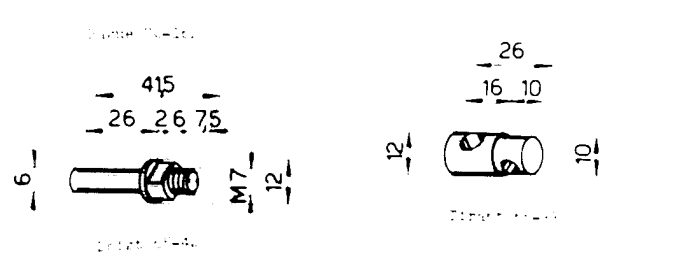
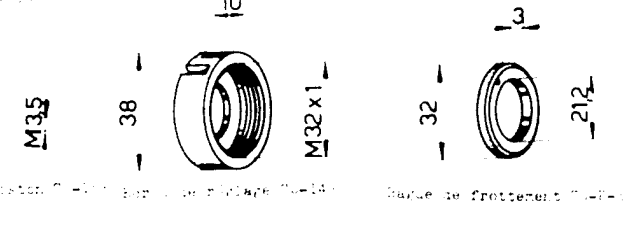
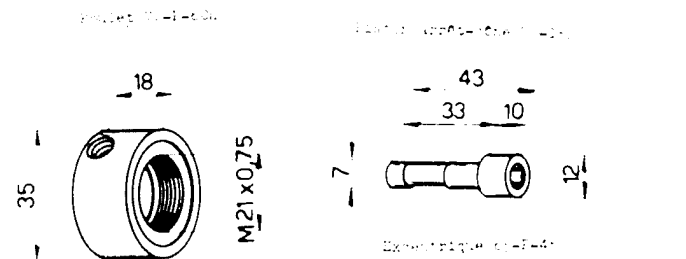
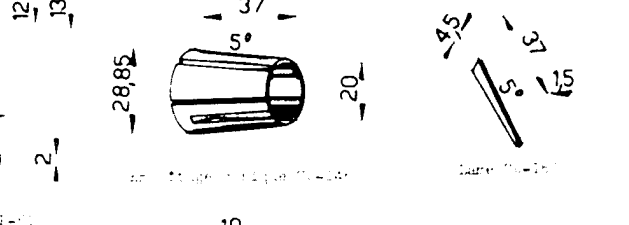
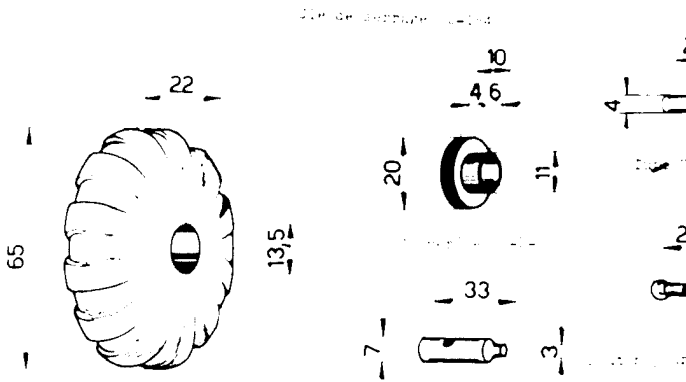
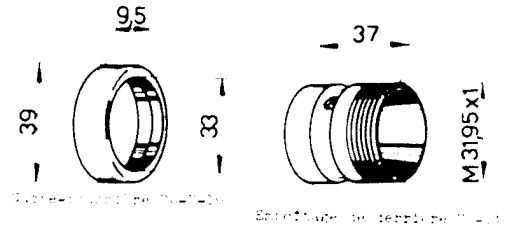


**SCHAUBLIN S.A. BÉVILARD/SUISSE**

# TOUR 70 POUPEE 12W ART.N°13



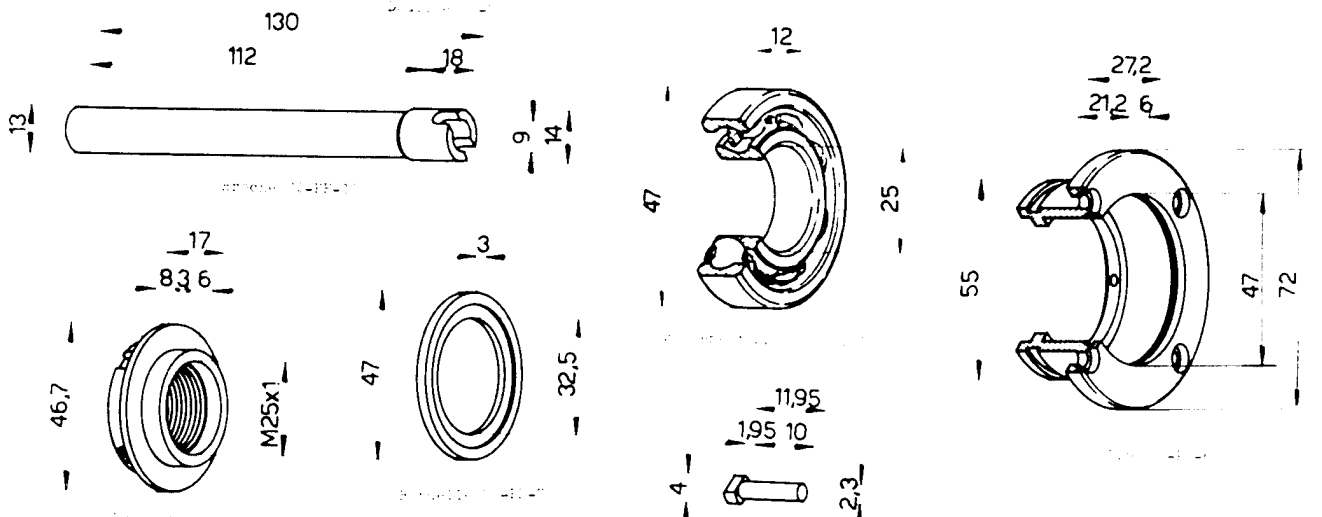
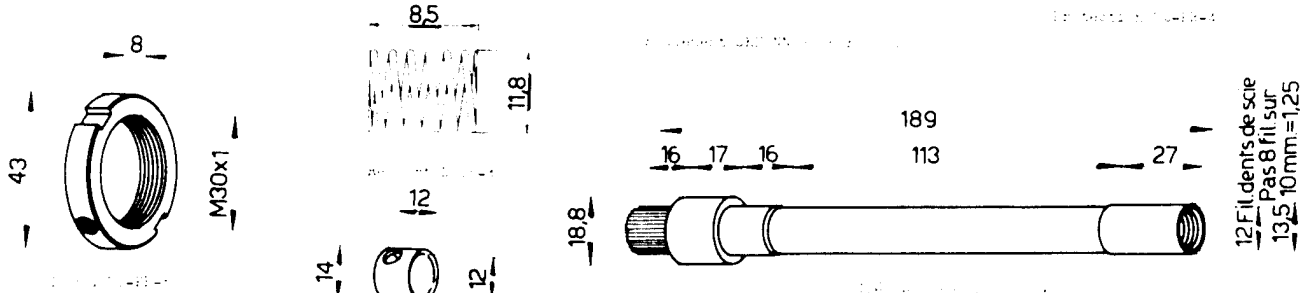
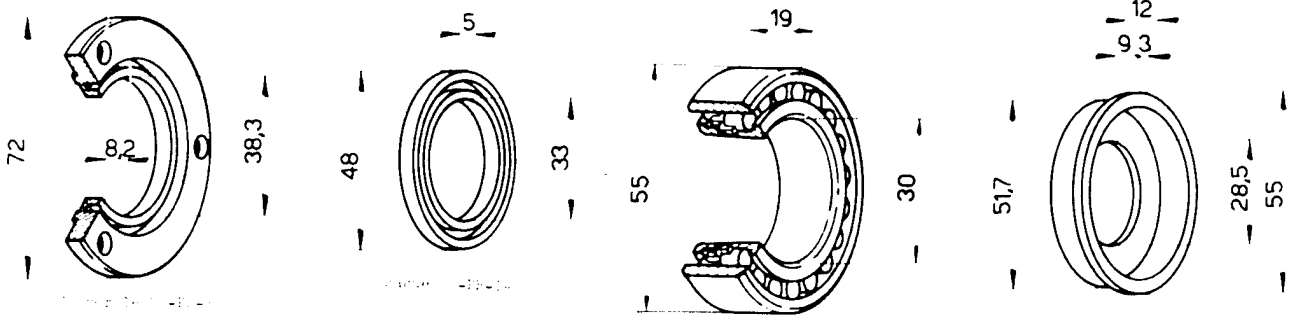
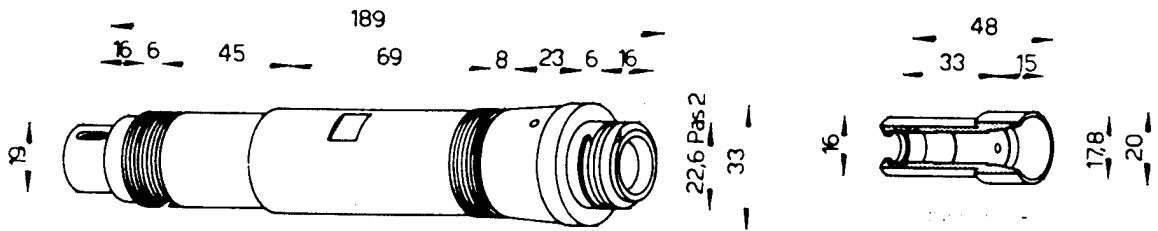
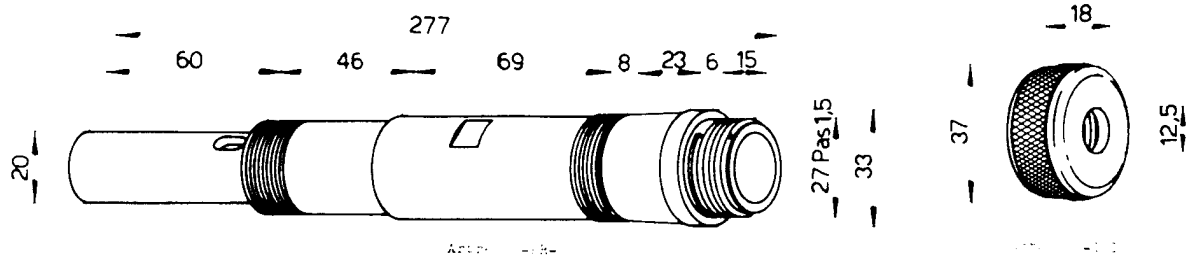
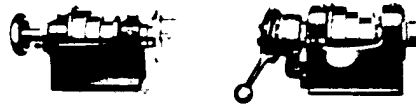
12. Fillet dent's de scie  
Pas 8 filets sur  
13.5 10mm = 1.25



TOUR 70  
TOUR 70  
SCHAUBLIN

POUPEE A ROULEMENTS 12W  
POUPEE A ROULEMENTS 12F

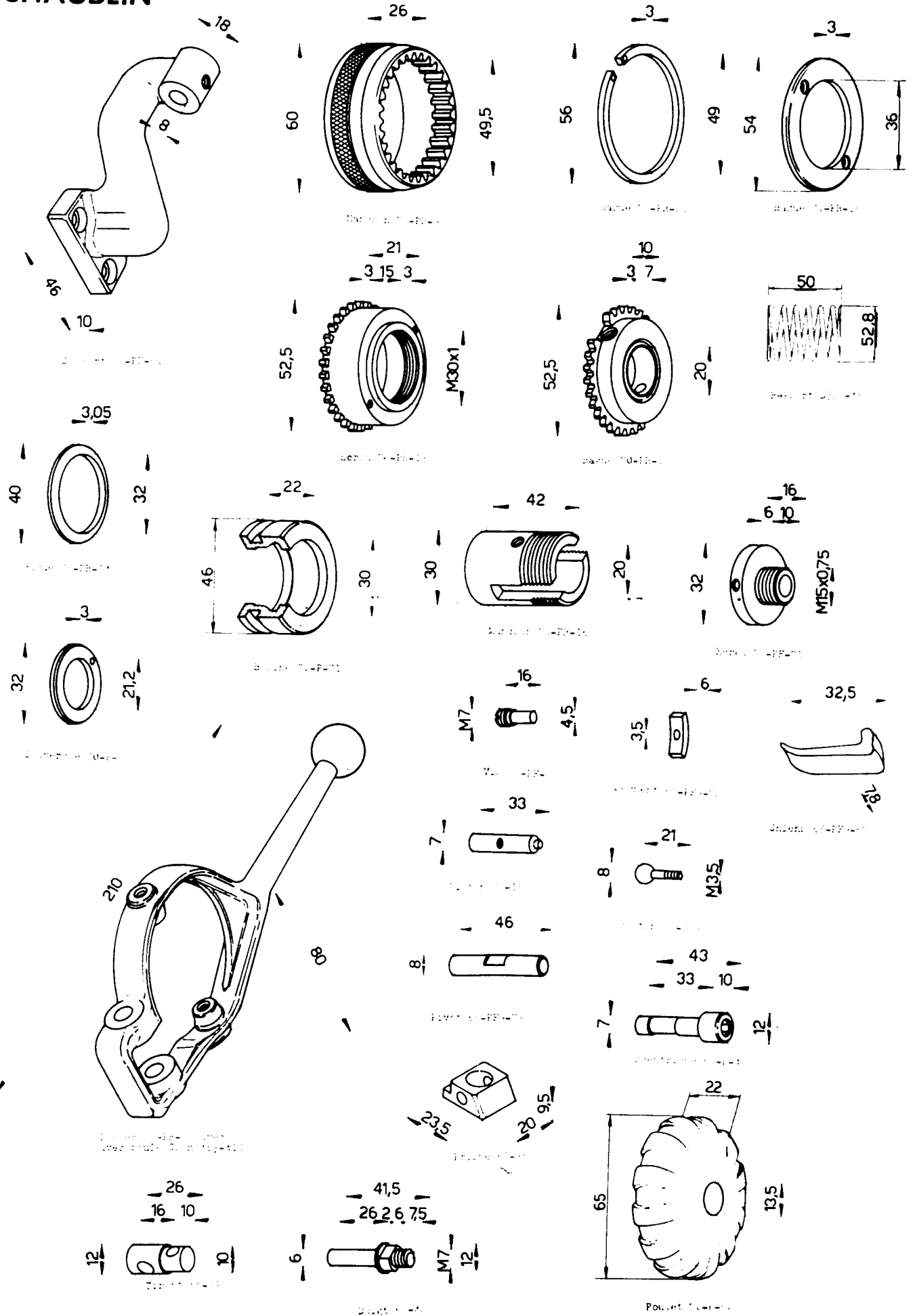
ART.Nº 13R  
ART.Nº 197





TOUR 70      POUPEE A ROULEMENTS 12W      ART.Nº 13R  
 TOUR 70      POUPEE A ROULEMENTS 12F      ART.Nº 197

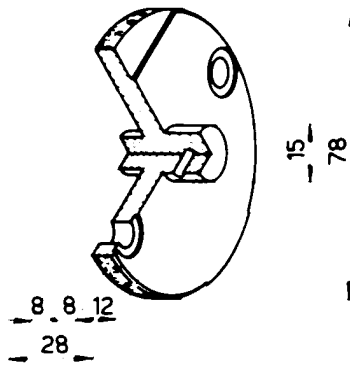
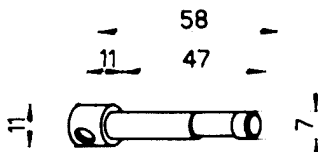
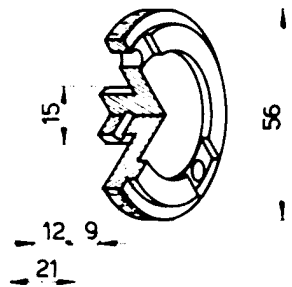
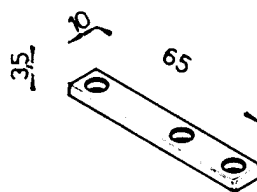
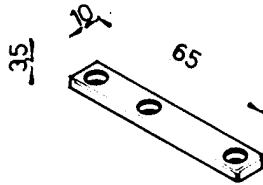
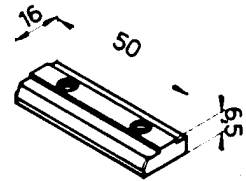
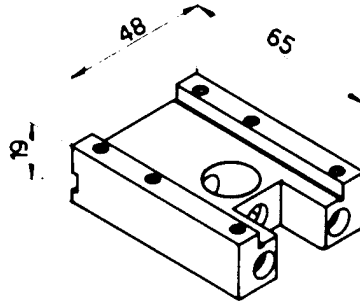
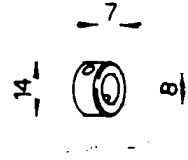
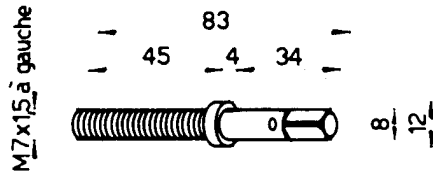
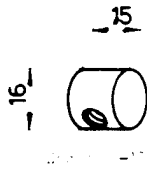
SCHAUBLIN



TOUR 65-70  
SCHAUBLIN

ETAU SUR BANC

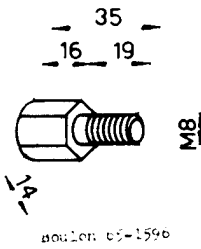
ART. N° 11-27



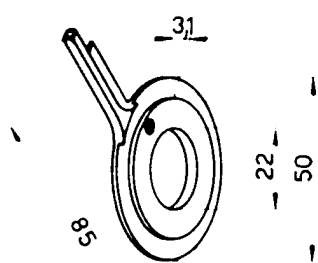
Les pièces 11-27, 11-28, 11-29, 11-30, 11-31, 11-32, 11-33, 11-34, 11-35, 11-36, 11-37, 11-38, 11-39, 11-40, 11-41, 11-42, 11-43, 11-44, 11-45, 11-46, 11-47, 11-48, 11-49, 11-50, 11-51, 11-52, 11-53, 11-54, 11-55, 11-56, 11-57, 11-58, 11-59, 11-60, 11-61, 11-62, 11-63, 11-64, 11-65, 11-66, 11-67, 11-68, 11-69, 11-70, 11-71, 11-72, 11-73, 11-74, 11-75, 11-76, 11-77, 11-78, 11-79, 11-80, 11-81, 11-82, 11-83, 11-84, 11-85, 11-86, 11-87, 11-88, 11-89, 11-90, 11-91, 11-92, 11-93, 11-94, 11-95, 11-96, 11-97, 11-98, 11-99, 11-100.

Spéciale 11-112, pour emploi de l'etou sur appareil à traîner SV 102

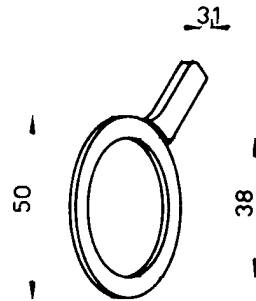
# TOUR 65-70 APPAREIL A DIVISER A 4 DISQUES ART.N°82



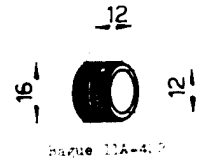
Boulon 65-1596



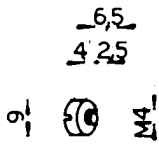
Aiguille gauche 11A-423



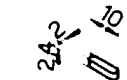
Aiguille droite 11-1485



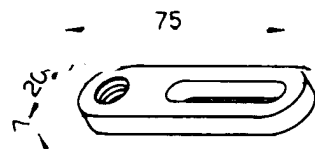
Bague 11A-410



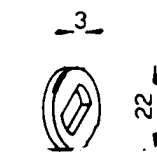
Vis 65-1597



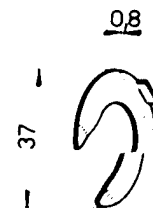
Clavette 65-143



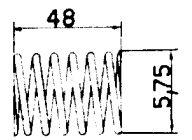
Bielle 65-1598



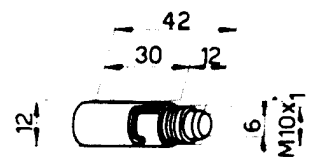
Becelle 65-1594



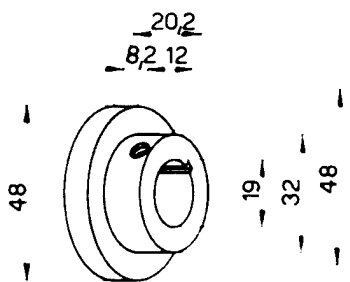
ressort 11A-424



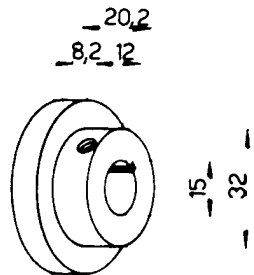
ressort 0050-40



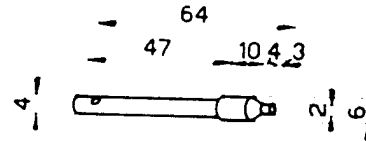
Support-piston 11A-401



Entraineur 11-186



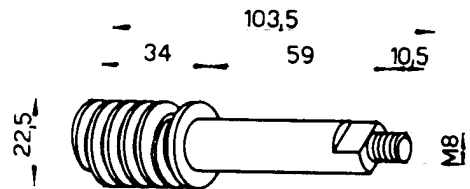
Entraineur 65-1599



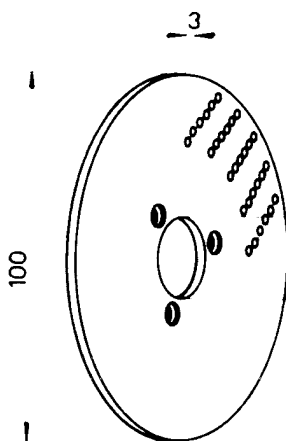
Piston 65-1591



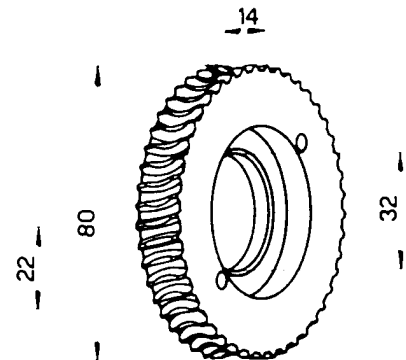
Boulle 65-1590



Vis-sous-fir 65-1587

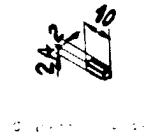
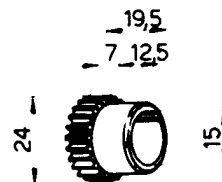
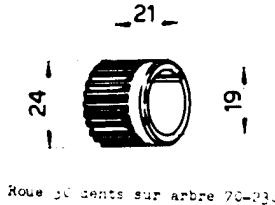
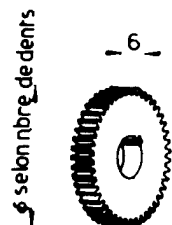
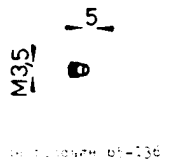
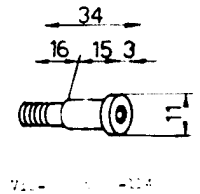
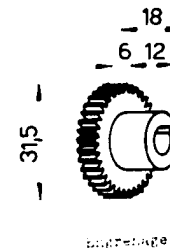
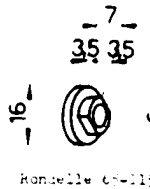
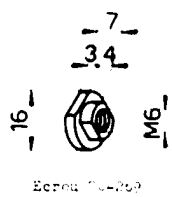
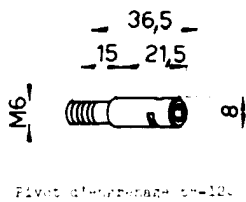
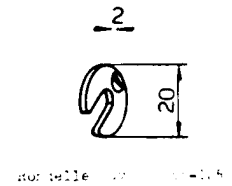
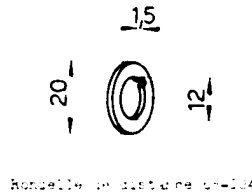
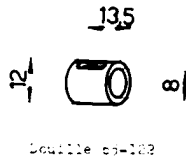
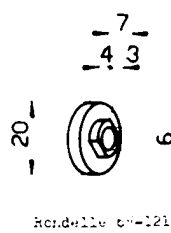
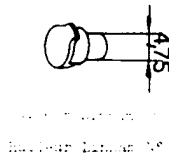
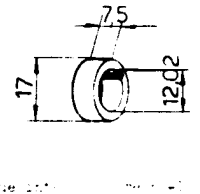
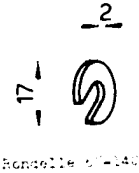
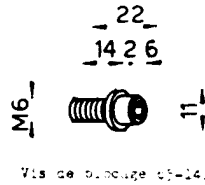
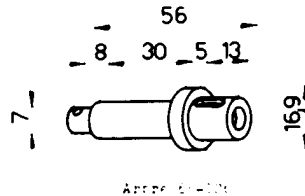
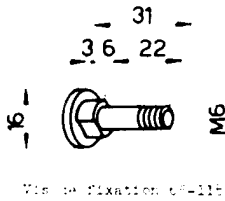
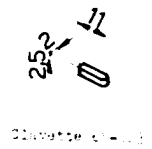
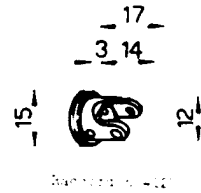
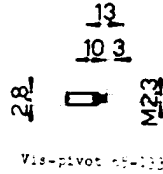
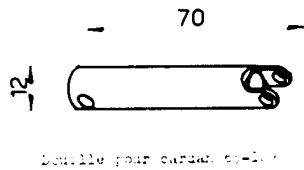
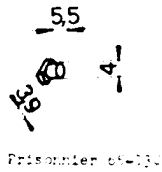
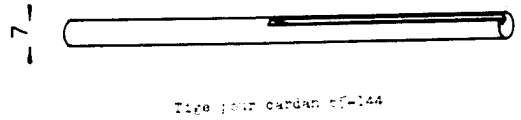
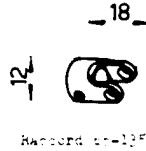
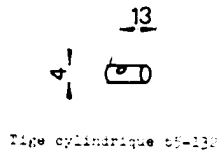
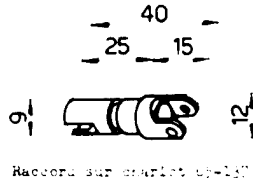
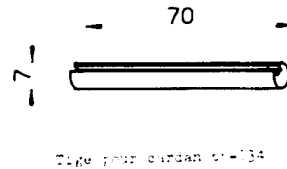
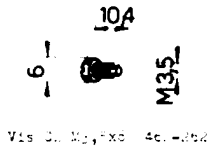
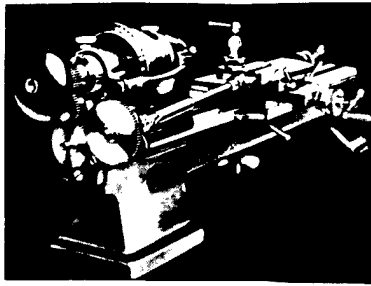


Disque 11-184

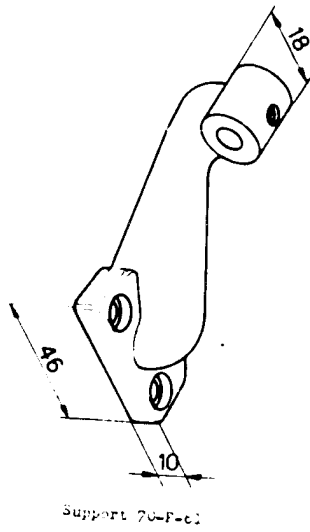


Roue 11-1583

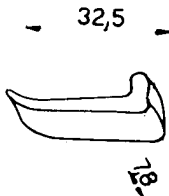
# TOUR 65-70 APPAREIL A FILETER PAR CARDAN ART. N°111



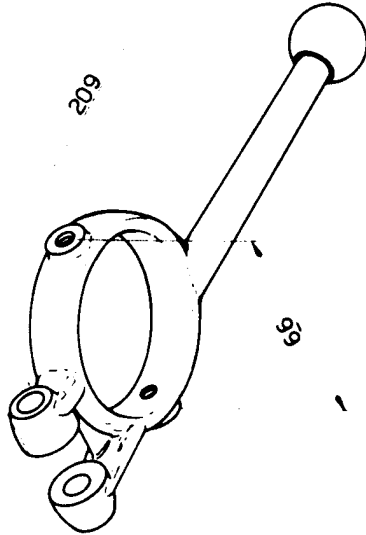
# TOUR 70 DISP. DE SERRAGE PAR LEVIER 12W ART.N°174



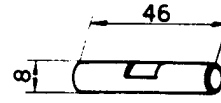
Support 70-P-62



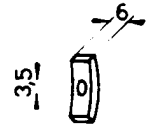
Chiens 65-PF9-c1



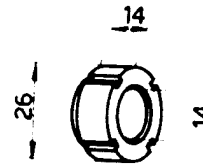
Levier 70-P-72 avec  
boule 403-410 C22n



Pivot 65-PF9-73



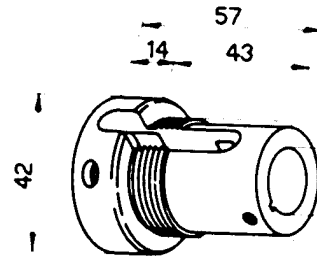
Segment 65-PF9-7



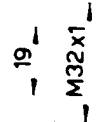
Bague 70-P-64



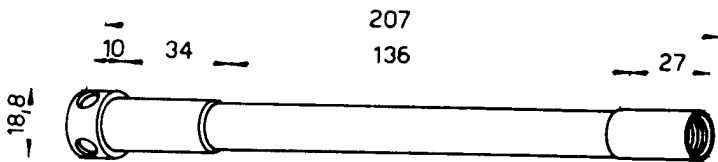
Clavette 65-P-62



Noyon 70-P-65

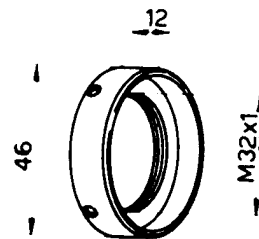


M32x1

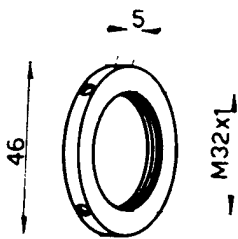


Clé de serrage 70-P-111

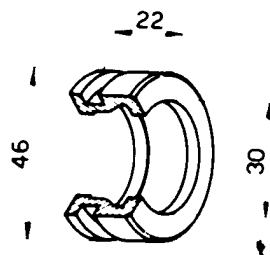
12 Fil dents de scie  
13,5 Pas 8 fil sur 10mm.



Ecrou 70-P-70



Ecrou 70-P-77

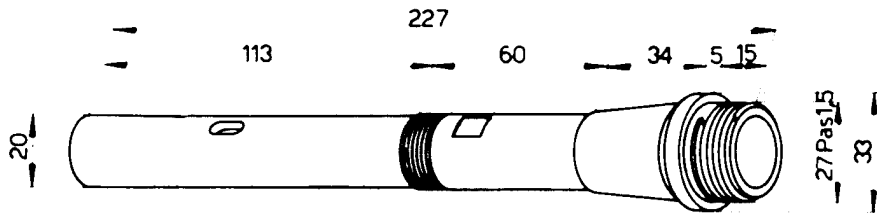


Bobbine 70-P-71

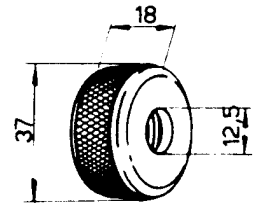
TOUR 70  
SCHAUBLIN

POUPEE 12F  
ANCIEN MODELE

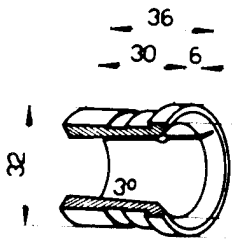
ART. N° 197



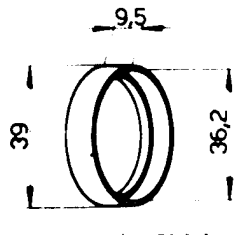
Arbre 70-PP-2



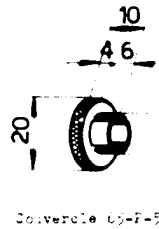
Becrou 70-101



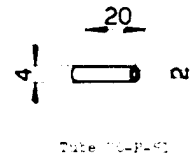
Emboitage devant 70-144



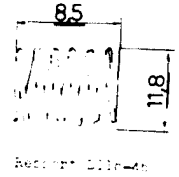
Cache-poussière 70-F-19



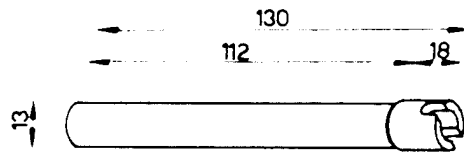
Couverture 65-F-50



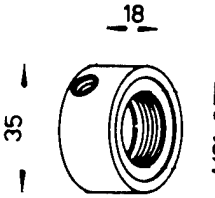
Dote 70-F-40



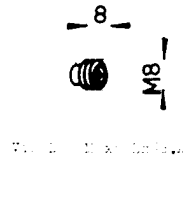
Resort 70-F-40



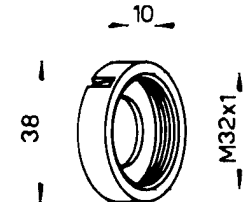
Broche 70-PP-11



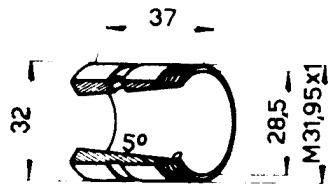
Bague de glissement 70-100



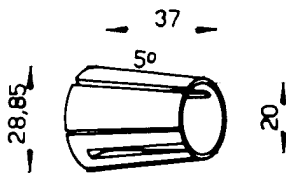
Pivot 70-F-140



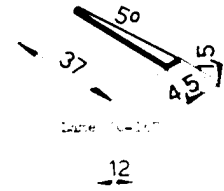
Becrou 70-140



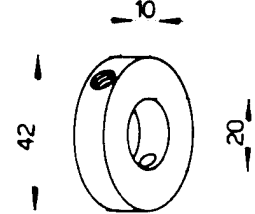
Emboitage de derrière 70-145



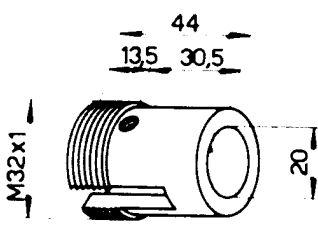
Emboitage conique 70-146



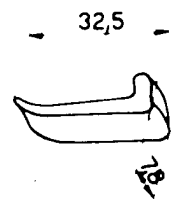
Dote 70-107



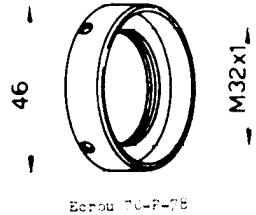
Bague 70-PP-4



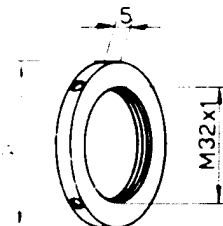
Kanchon 70-PP-26



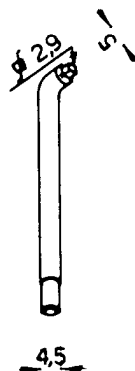
Chiens 65-PP9-67



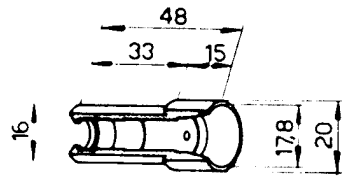
Becrou 70-F-78



Becrou 70-F-87



Pivot 70-100

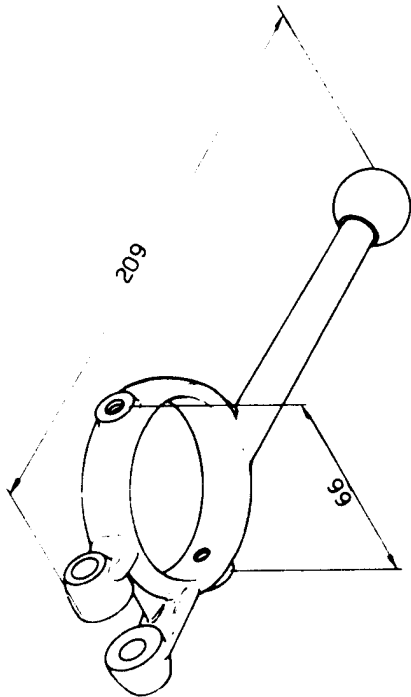


Mancher 70-100

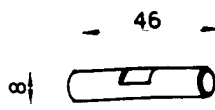
TOUR 70

POUPEE 12F  
ANCIEN MODELE

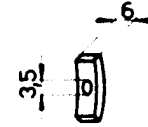
ART.Nº 197



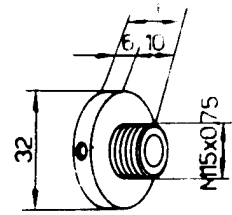
Boite 70-PF-01



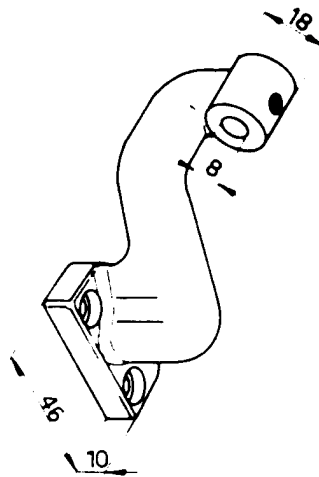
Pivot 65-PF-73



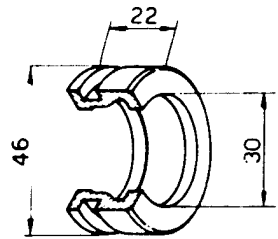
Segment 65-PF-72



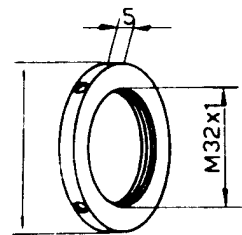
Bague 70-PF-02



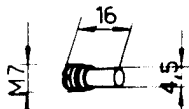
Support 70-PF-01



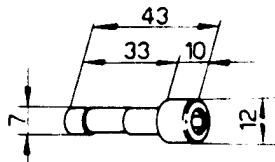
Bague 70-PF-03



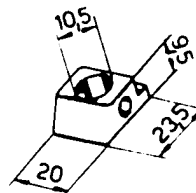
Bague 70-PF-04



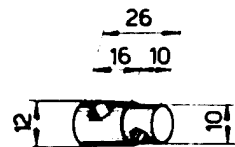
Bague 70-PF-05



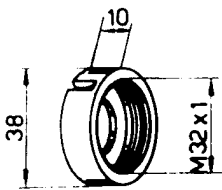
Excentrique 70-PF-06



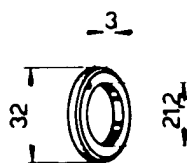
Prisme 65-35



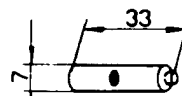
Tirant 65-33



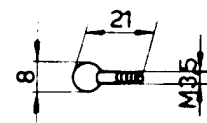
Bague 70-149



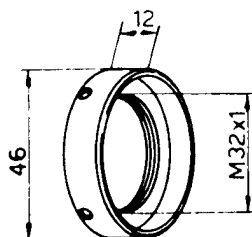
Bague 70-P-3



Piston 70-151

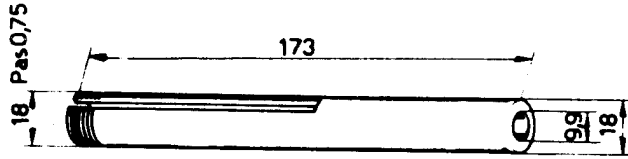


Bouton 70-153

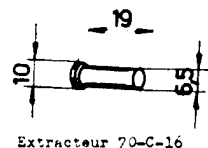


Bague 70-PF-08

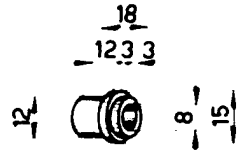
# TOUR 70 CONTRE-POUPEE ART. N°277



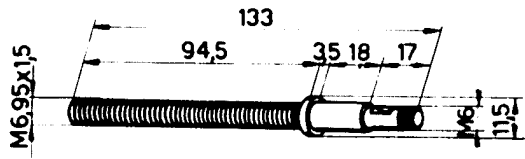
Broche 70-C-10



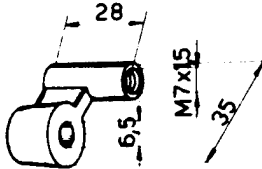
Extracteur 70-C-16



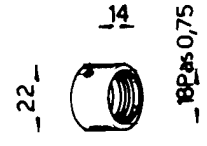
Douille 70-C-11



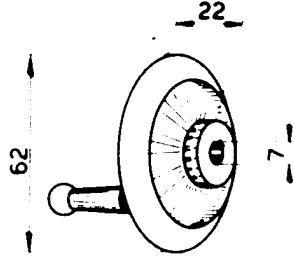
Vis 70-C-13



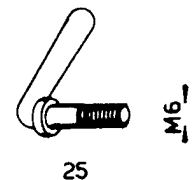
Ecrou 70-205a



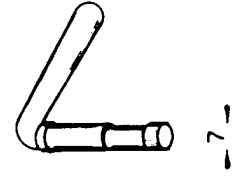
Ecrou repère 70-C-12



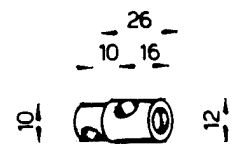
Volant 70-C-14 avec poignée  
ex10x45 463-402



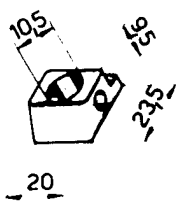
Vis de blocage 65-166



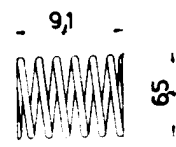
Excentrique 65-289



Tirant 65-288



Prisme 65-35

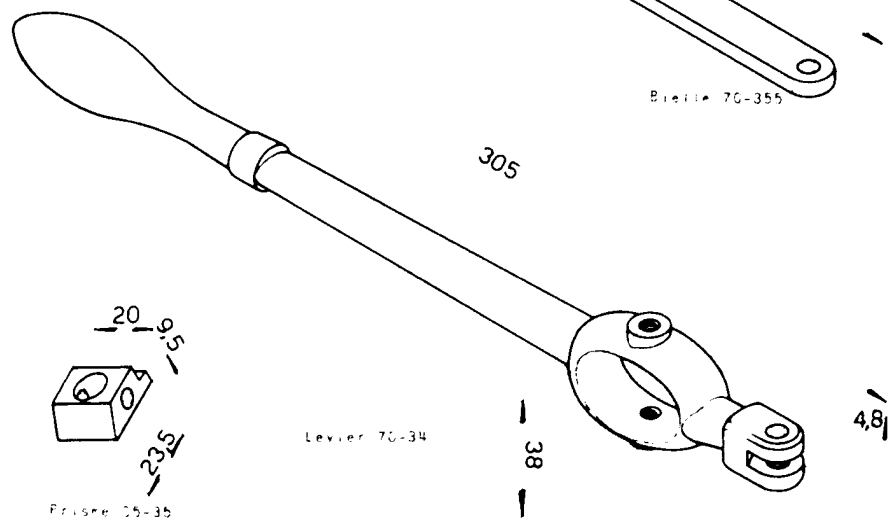
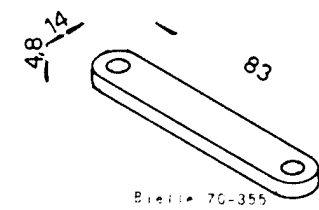
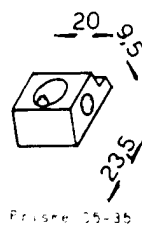
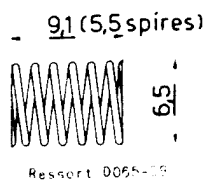
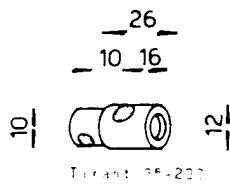
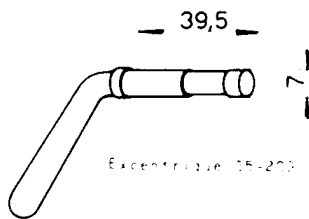
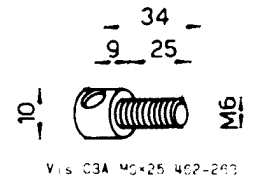
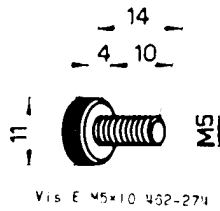
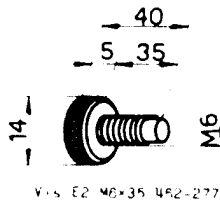
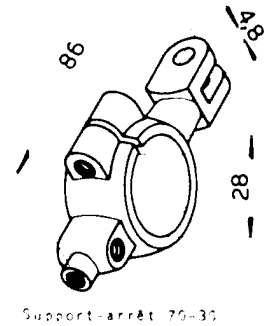
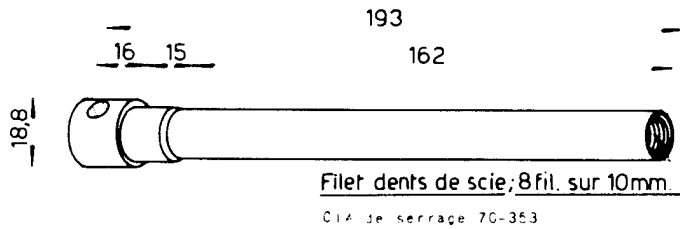
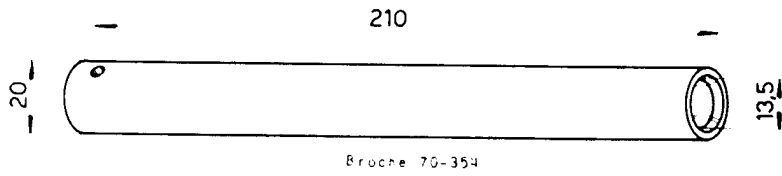
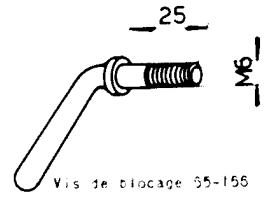
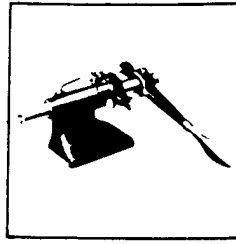


Ressort 0065-96

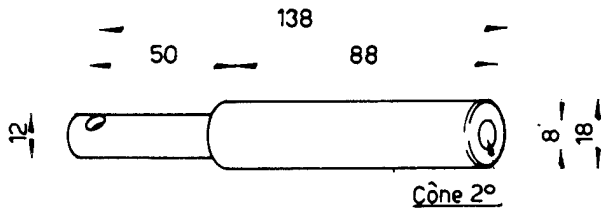


# TOUR 70 SCHAUBLIN

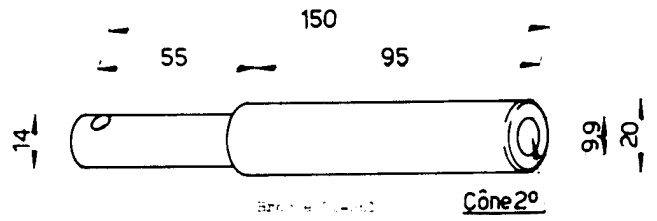
# CONTRE-POUPEE A LEVIER ART. N°302



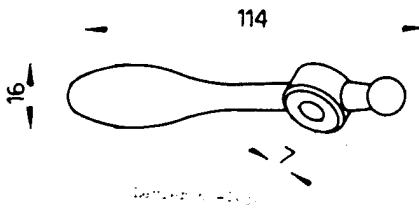
TOUR 65-70 CONTRE-POUPEE A LEV. A RESS. ART. N° 303



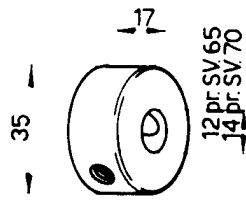
Arbre de lev. 303



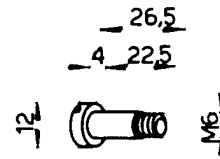
Arbre de lev. 65



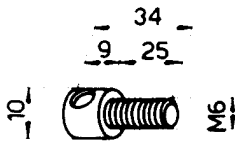
Manivelle 303



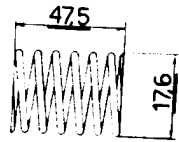
Bague 303-303



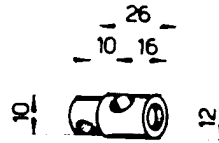
Vis 303-303



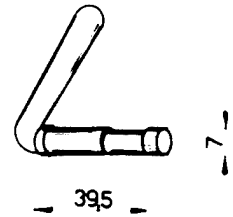
Vis 303-303



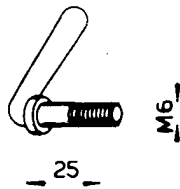
Resort 303-303



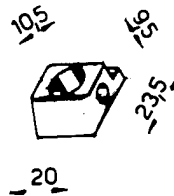
Dispositif 303



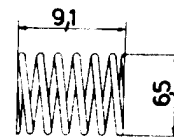
Contre-poupee 303



Vis de réglage 303-303

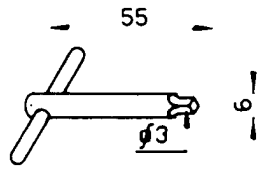
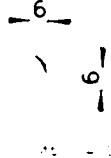
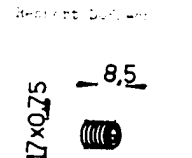
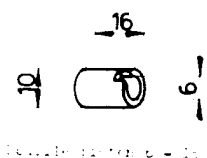
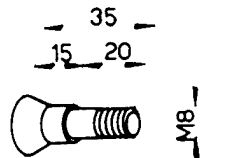
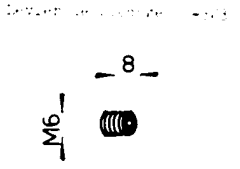
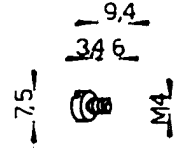
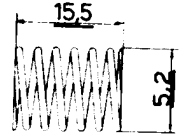
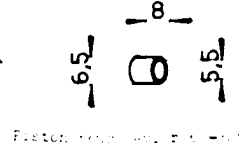
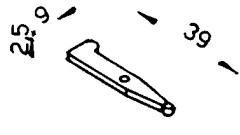
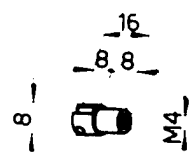
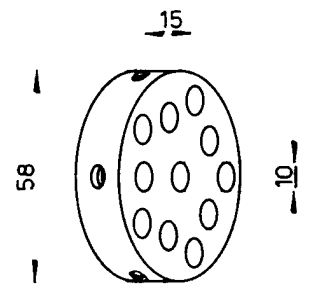
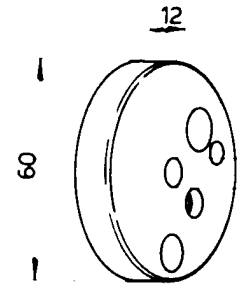
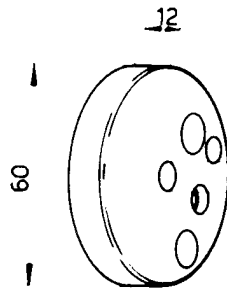
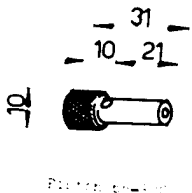
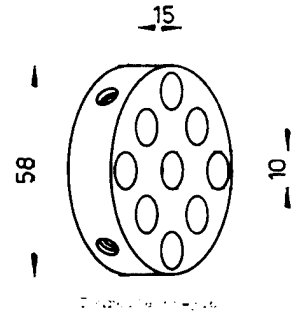
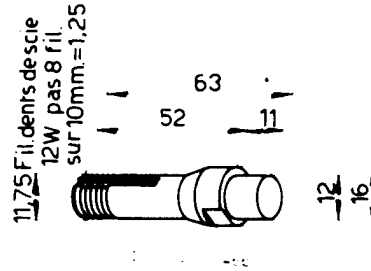
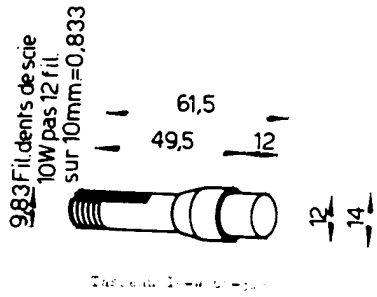


Prisme 303



Resort 303-303

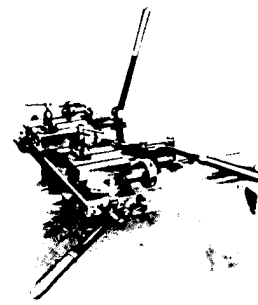
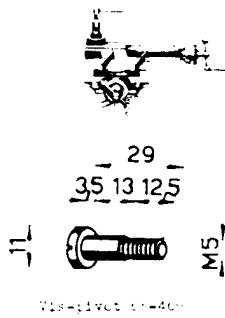
# TOUR 65-70 TOURELLE REVOLVER A 4 & 5 OUTILS ART. N° 313



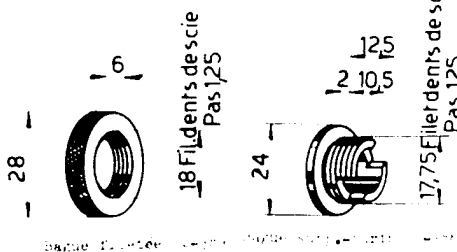
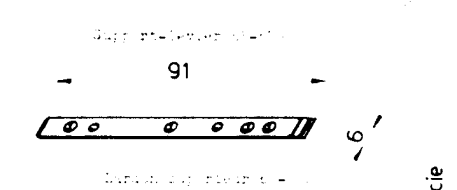
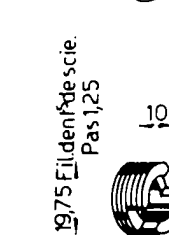
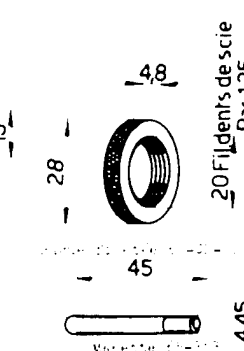
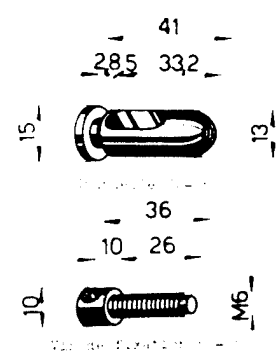
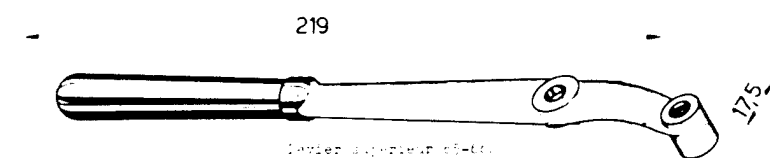
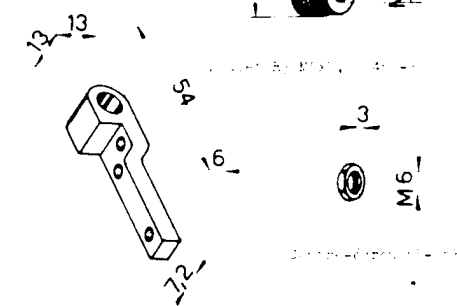
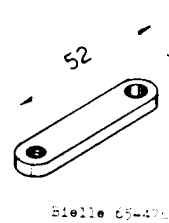
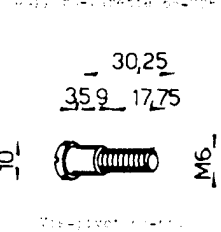
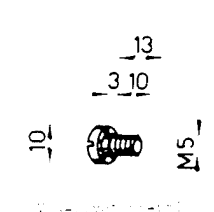
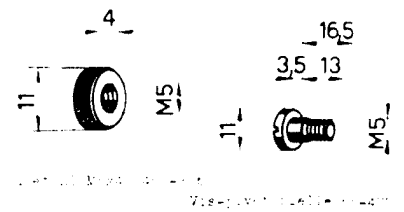
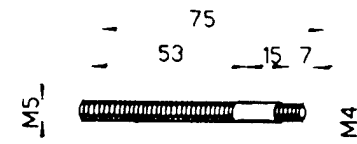
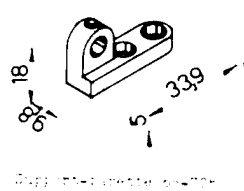
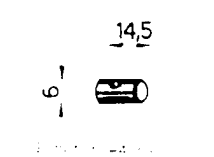
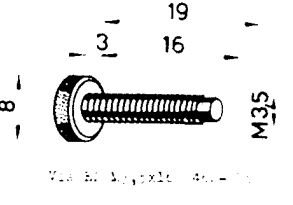
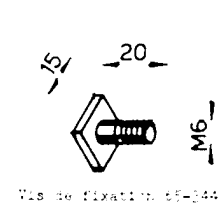
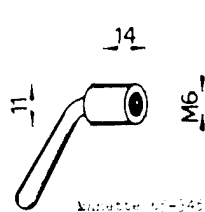
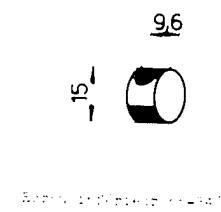
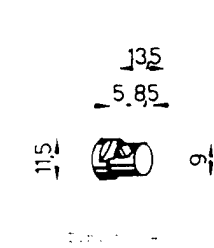
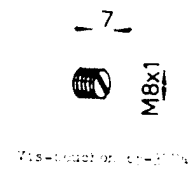
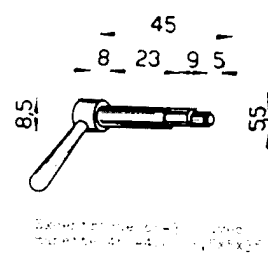
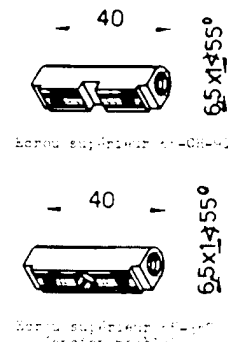
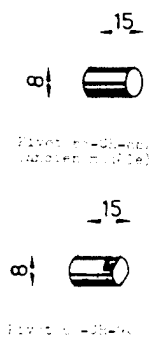
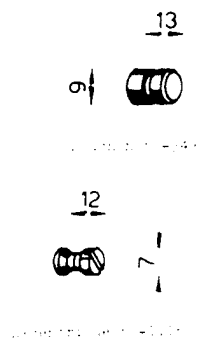
TOUR 65-70  
TOUR 65-70  
TOUR 65-70

CHARIOT A CHANDELLE  
CHARIOT UNIVERSEL  
CHARIOT UNIVERSEL A 2 COULISSES

ART. N° 343  
ART. N° 708  
ART. N° 1005



**SCHAUBLIN**  
PIECES COMMUNES

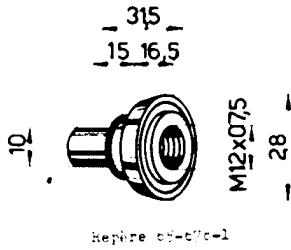


TOUR 65-70  
 TOUR 65-70  
 TOUR 65-70  
**SCHAUBLIN**

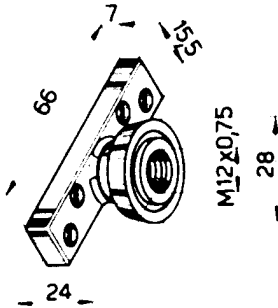
CHARIOT A CHANDELLE  
 CHARIOT UNIVERSEL  
 CHARIOT UNIVERSEL A 2 COULISSES

ART. N° 343  
 ART. N° 708  
 ART. N° 1005

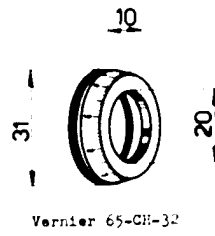
**ART. N° 343**



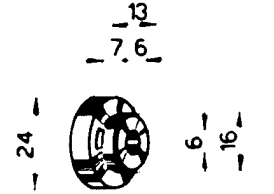
Repire 65-670-1



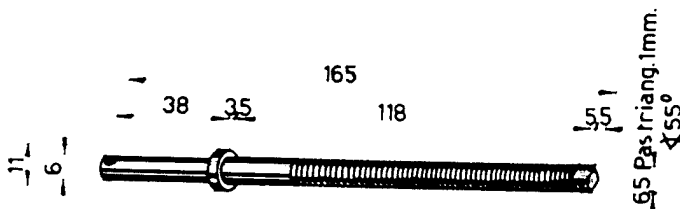
Flaque-goutte 65-670-D



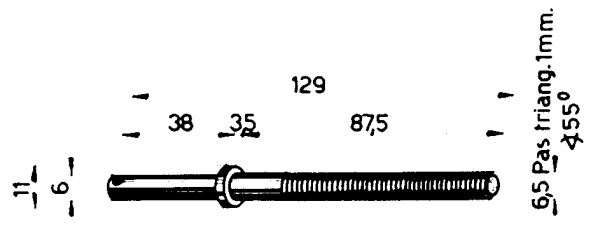
Vernier 65-68-32



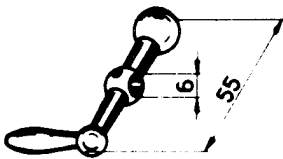
Disque pour vernier 65-68-33



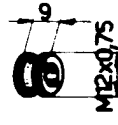
Vis supérieure 65-303-1



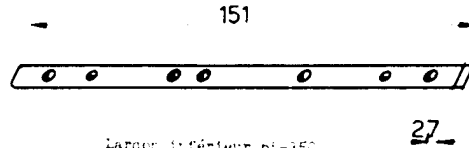
Vis inférieure 65-304-1



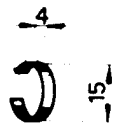
Manivelle 65-363-1 avec manette 65-364



Bore 65-360

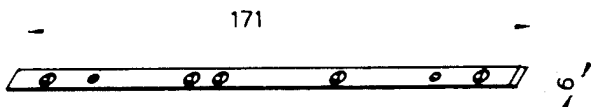


Lardon inférieur 65-350

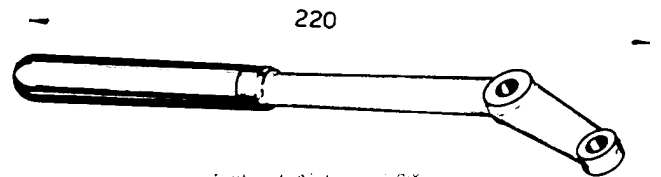


Resort de protection 65-361

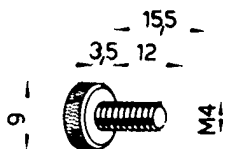
**ART N° 708**



Lardon 65-672

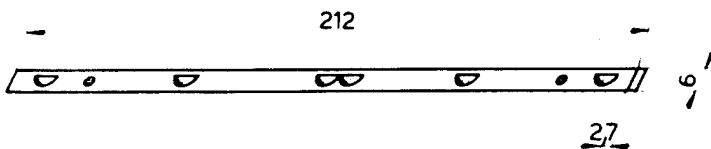


Lever inférieur 65-709

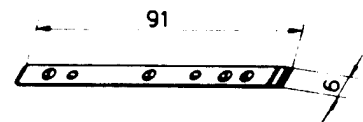


Vis E M4x1. 467-074

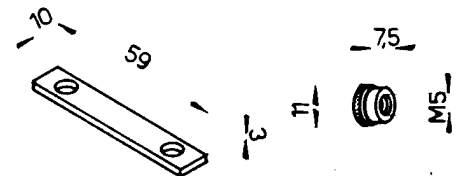
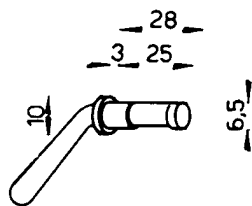
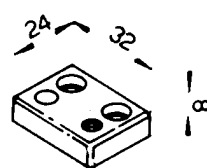
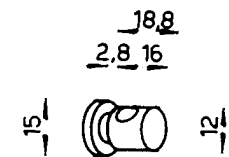
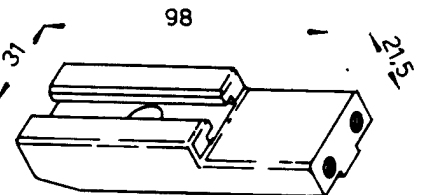
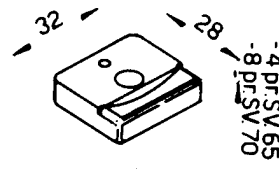
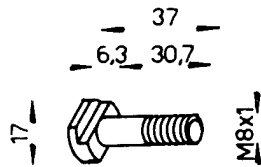
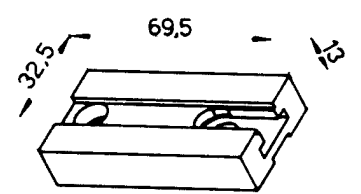
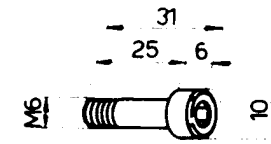
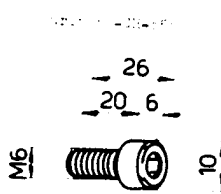
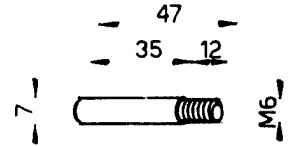
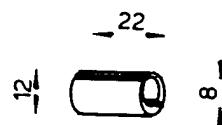
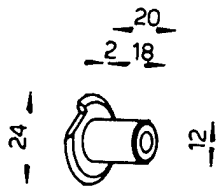
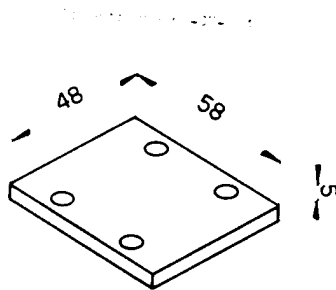
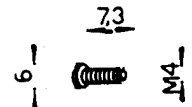
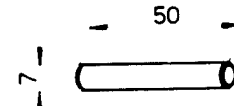
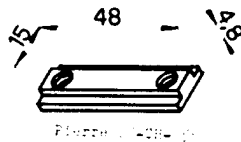
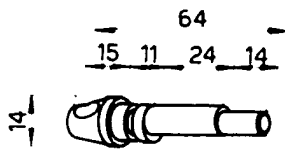
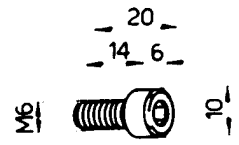
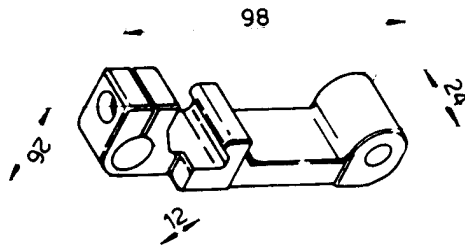
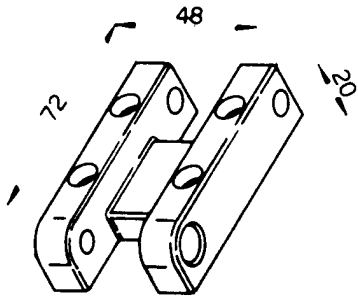
**ART. N° 1005**



Lardon 65-1012

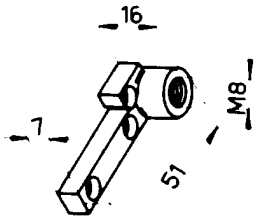


Lardon 65-1011

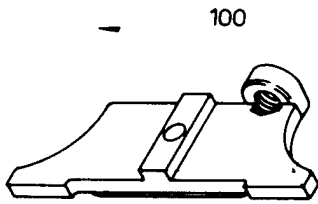


# TOUR 65-70 SCHAUBLIN

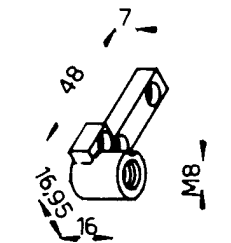
# ACCESSOIRES DE CHARIOTS



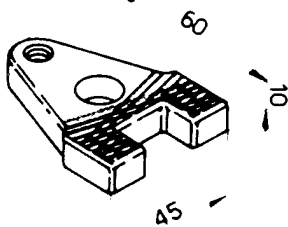
Support-tournevieille 65-682



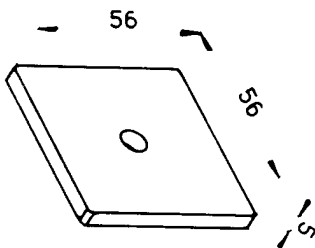
Pied de chariot débride 65-687



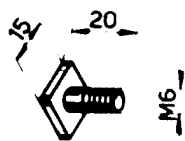
Support-tournevieille 65-683



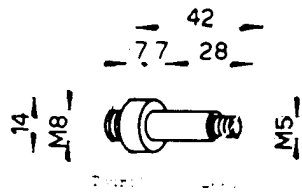
Griffe 65-680



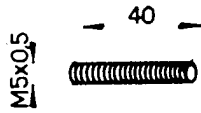
Plaque pour chariot 65-684



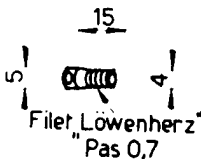
Vis de fixation 65-686



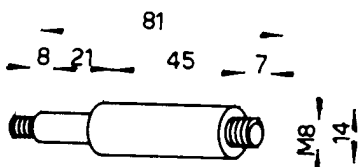
Tournevieille 65-690



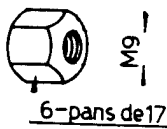
Vis d'arrêt 65-691



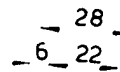
Vis de filetage 65-690



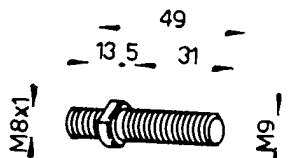
Tournevieille 65-689



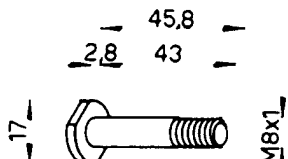
6-pans de 17



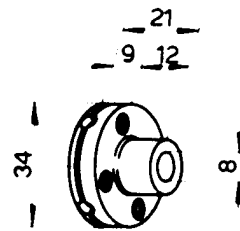
Vis de serrage 65-688



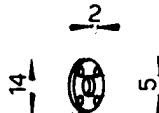
Vis de serrage 65-689



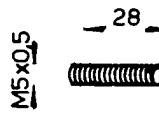
Vis de fixation 65-685



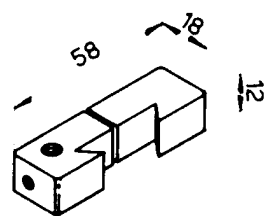
Tournevieille 65-692



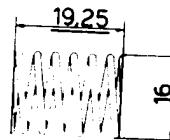
Rondelle 65-693



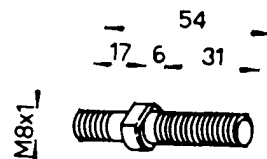
Vis d'arrêt 65-692



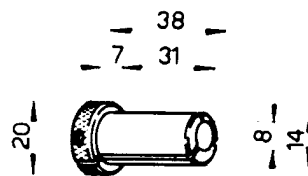
Appât 65-694



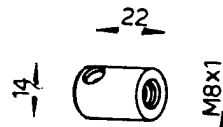
Ressort D023-16



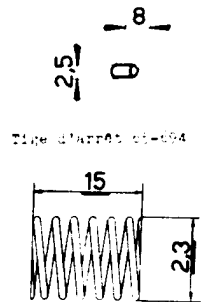
Vis de serrage 65-684



Tournevieille 65-681

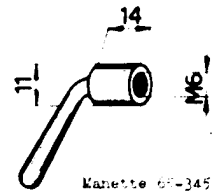


Support-tournevieille 65-682

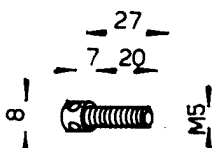


Type d'arrêt 65-694

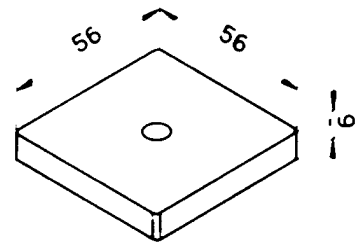
Ressort D023-16



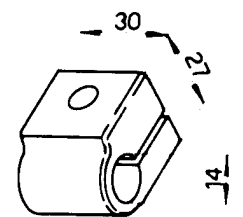
Manette 65-645



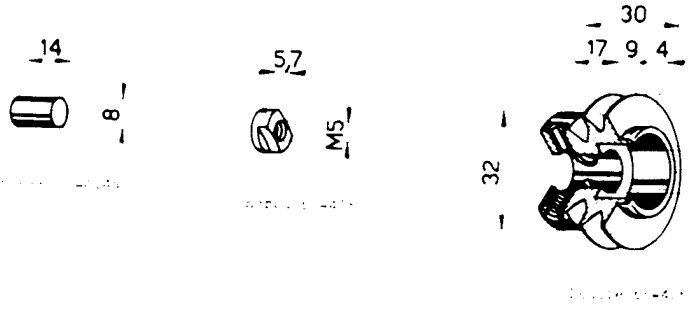
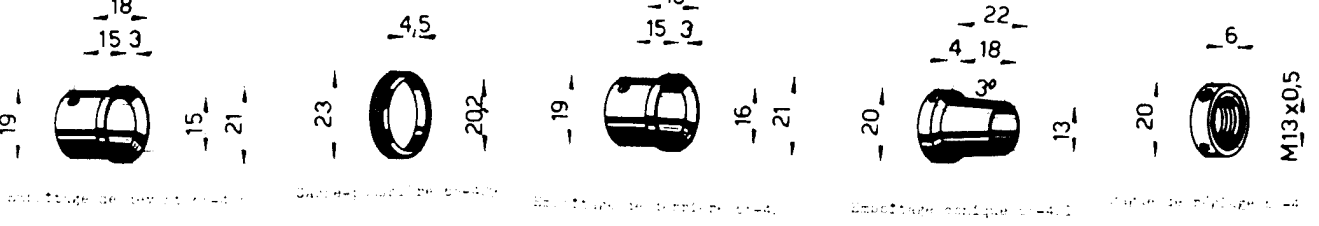
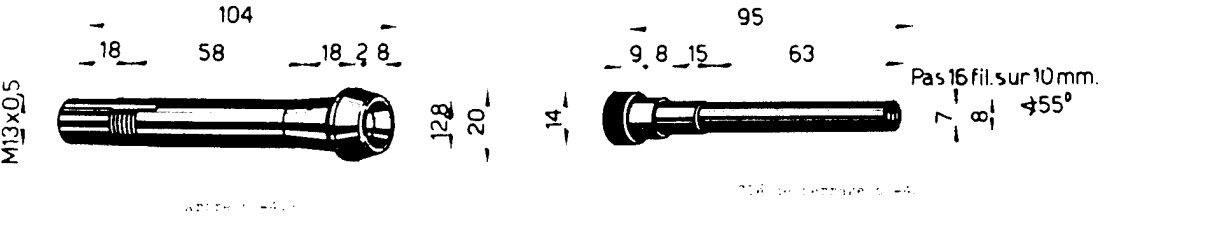
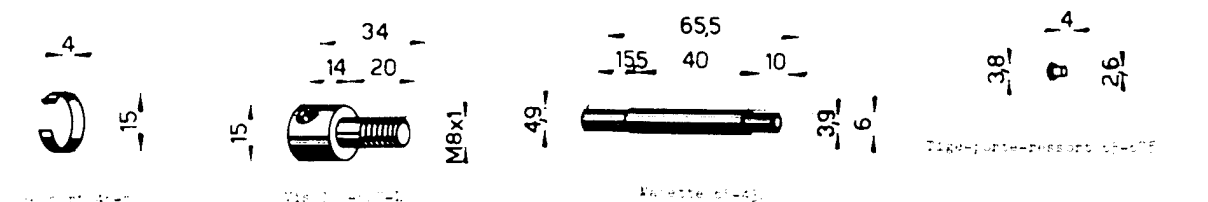
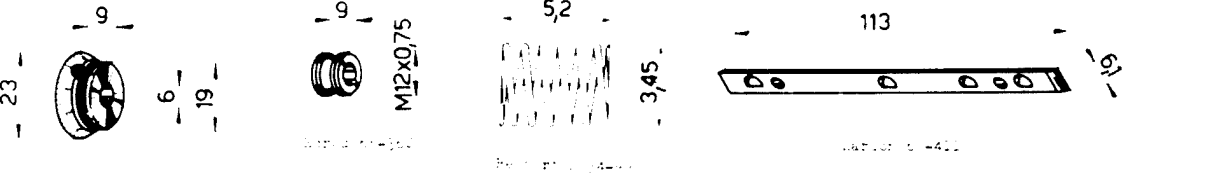
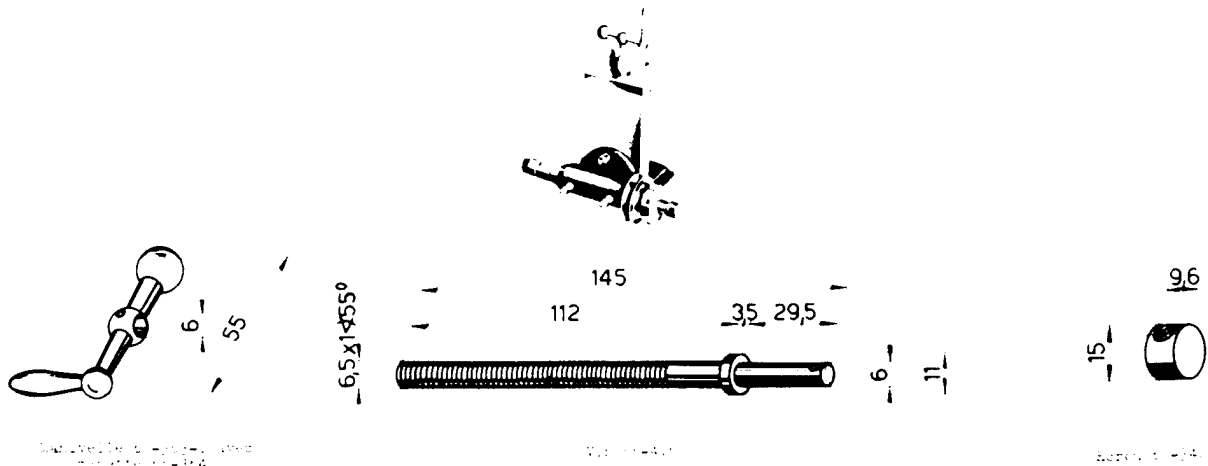
Vis 65-614



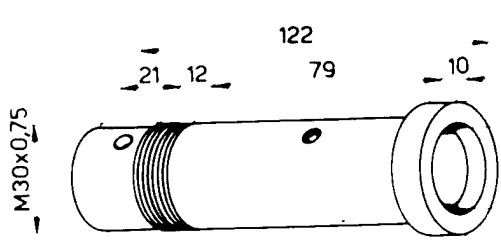
Plaque pour chariot 65-685



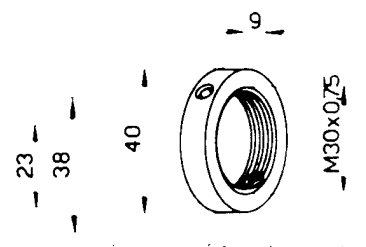
Vis de serrage 65-684



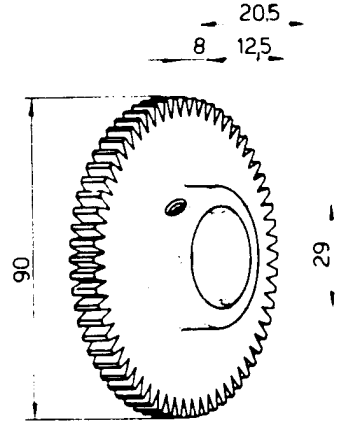




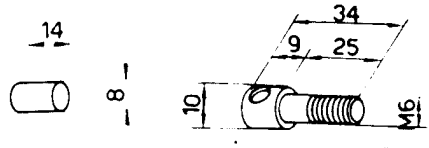
Arbre (12-65-70)



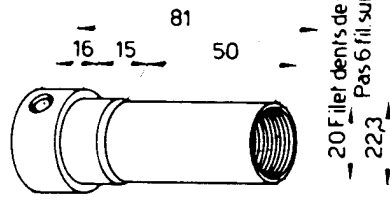
Partie de réglage (12-65-70)



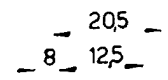
Meuble à dents (12-65-70)



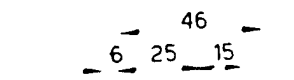
Vis (12-65-70)



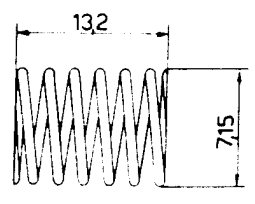
Clif de serrage (12-65-70)



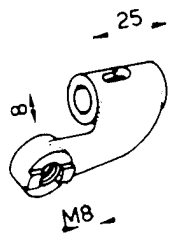
Meuble à dents (12-65-70)



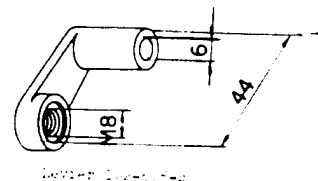
Vis (12-65-70)



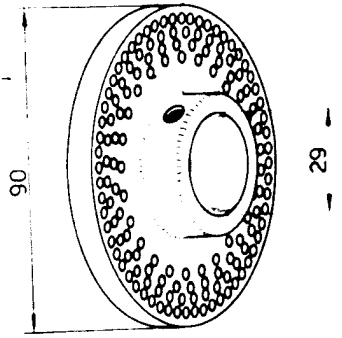
Resort (12-65-70)



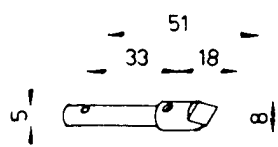
Support (12-65-70)



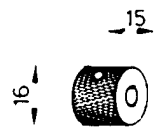
Support (12-65-70)



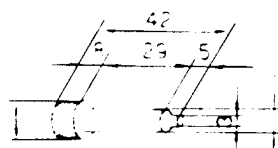
Meuble à dents (12-65-70)



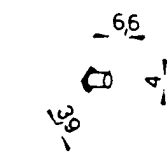
Vis (12-65-70)



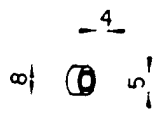
Vis (12-65-70)



Plaque (12-65-70)

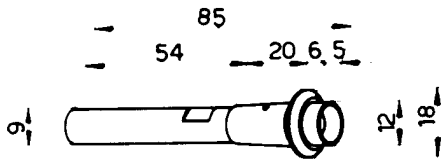


Support (12-65-70)

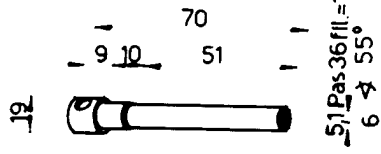


Vis (12-65-70)

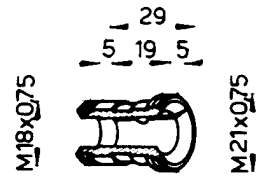
# TOUR 65-70 APPAREIL A MEULER EXT. ART. N° 441



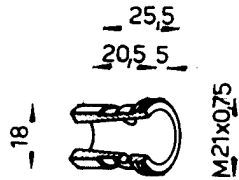
Arbre 65-ME-7



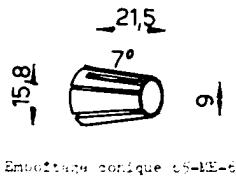
Disque de meulage 65-ME-13



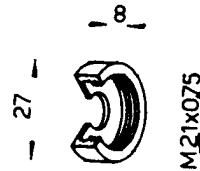
Broyage avant 65-ME-4



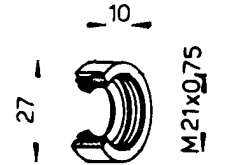
Broyage arrière 65-ME-5



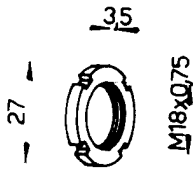
Broyage conique 65-ME-6



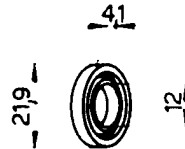
Borox de serrage 65-ME-10



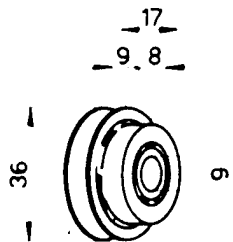
Borox de réglage 65-ME-9



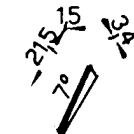
Borox 65-ME-11



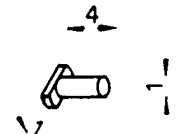
Protection 65-ME-8



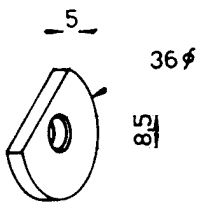
Poulie 65-ME-14



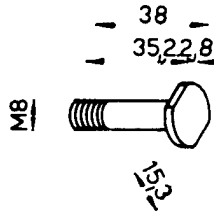
Lame 65-ME-16



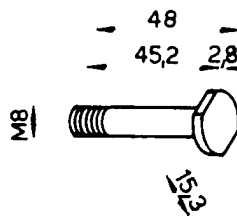
Pivotement 65-ME-15



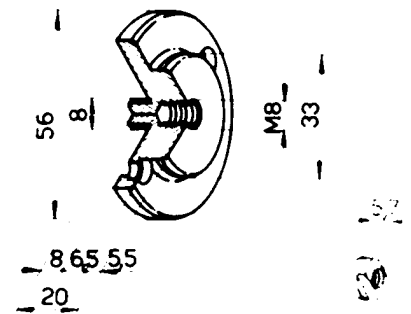
Plaque intermédiaire 70-ME-17



Tige de fixation 65-ME-14

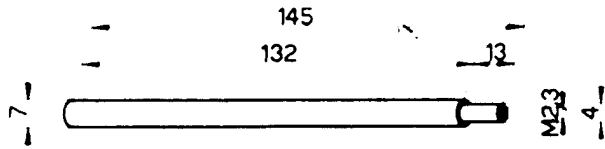


Tige de fixation 70-ME-15

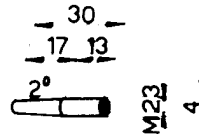


Plaque spéciale 65-ME-18 & écrou 65-415 pour utiliser l'appareil à meuler 65 65 sur l'appareil à fraiser

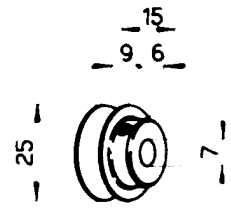
# TOUR 65-70 APPAREIL A MEULER INT. ART. N° 444



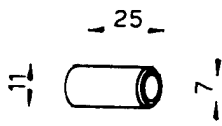
Broche 65-70a



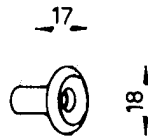
Tasseau 65-70c



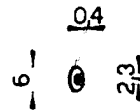
Poulie 65-70a



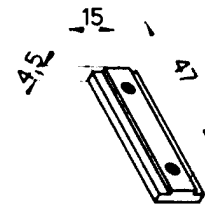
Bouille 65-70a



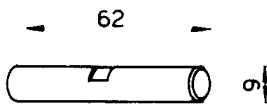
Poulie 65-111a



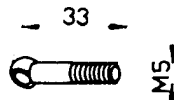
Rondelle 65-501



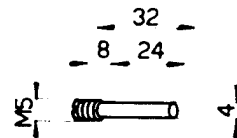
Prisme 65-70



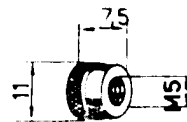
Pivot 65-70



Pige 65-70a



Vis-pivot 65-70a



Bore 65 M5x7,5 462-306

TOUR 65-70

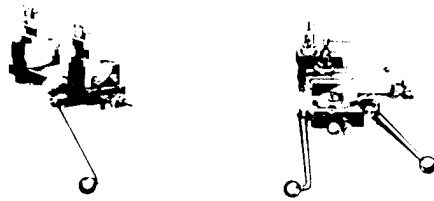
CHARIOT A TRONCONNER

ART.Nº489a

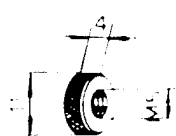
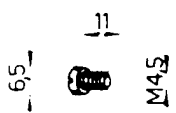
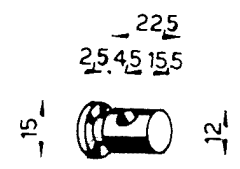
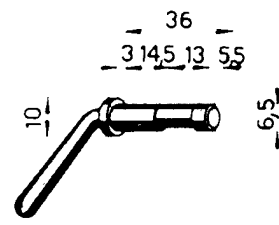
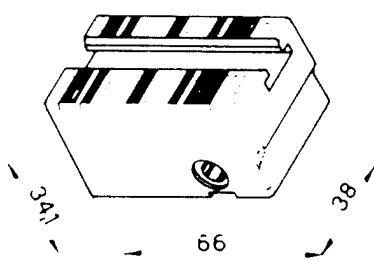
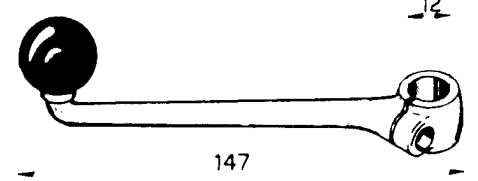
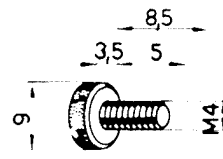
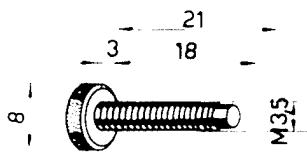
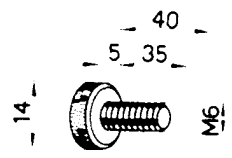
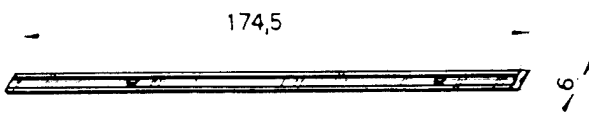
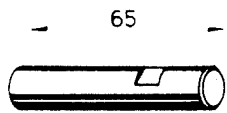
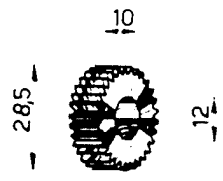
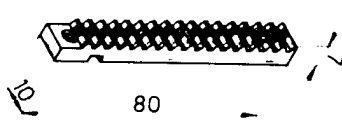
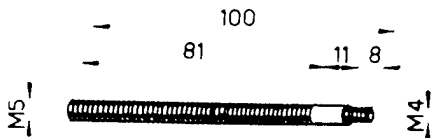
TOUR 65-70

CHARIOT A TRONCONNER A 2 LEVIERS

ART.Nº468



PIECES COMMUNES



TOUR 65-70

CHARIOT A TRONCONNER

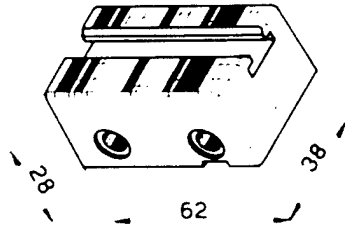
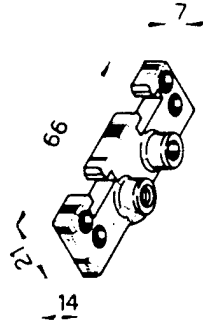
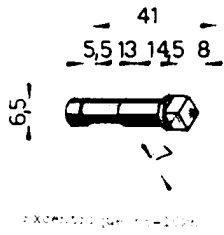
ART. N° 489a

TOUR 65-70

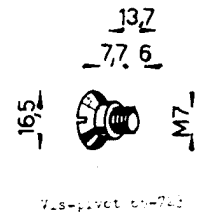
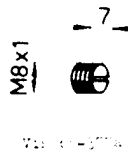
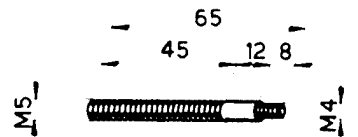
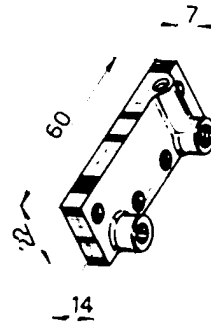
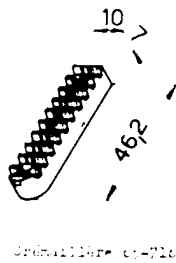
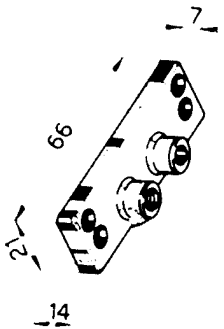
CHARIOT A TRONCONNER A 2 LEV.

ART. N° 468

ART. N° 489a



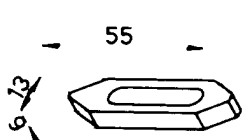
ART. N° 468



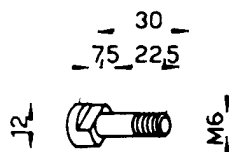
TOUR 65-70  
TOUR 65-70  
TOUR 65-70

LUNETTE A 3 CHIENS  
LUNETTE A TROUS  
SUPPORT A MAIN  
TIGE DE FIXATION

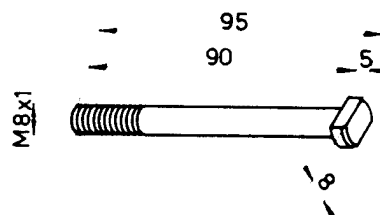
ART. N° 524  
ART. N° 528  
ART. N° 506



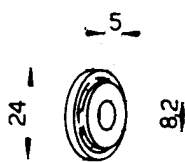
Oulet 65-505



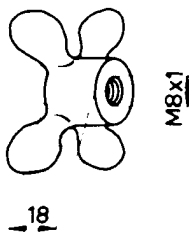
Vis de fixation 65-506



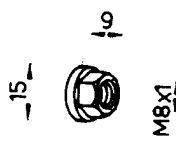
Tige de fixation 65-507



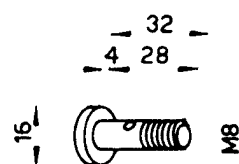
Rondelle 65-508



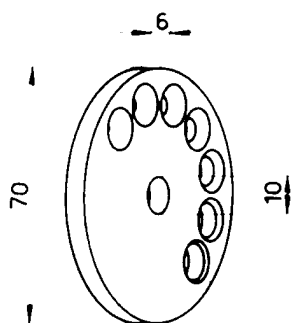
Poulie à 4 viles 65-7



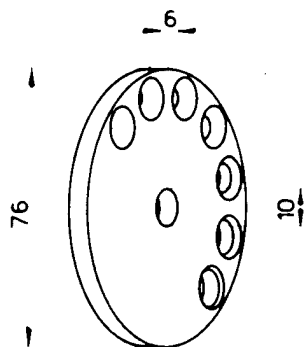
Becot 65-532



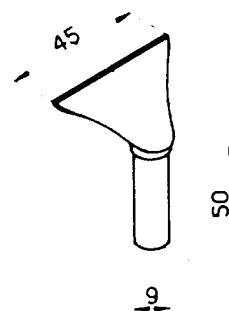
Vis de fixation 65-530



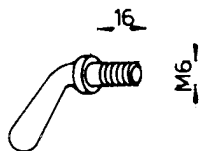
Disque 65-509



Disque 65-510



Support 65-504



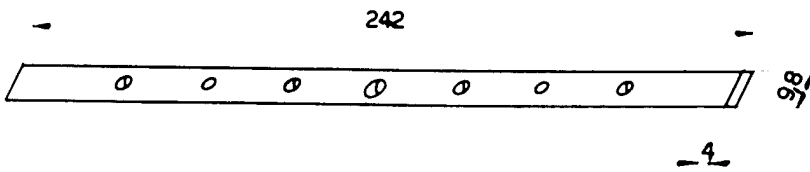
Manette de blocage 65-507



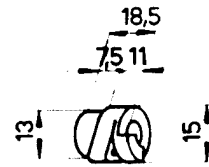
TOUR 65-70

CHARIOT REVOLVER

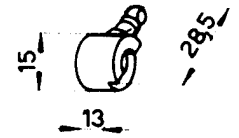
ART. N° 600



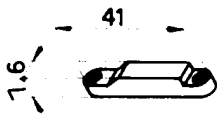
Lardon 65-1260



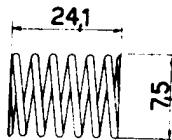
Levier 65-1296



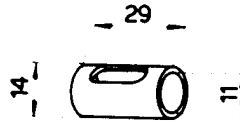
Levier 65-1295



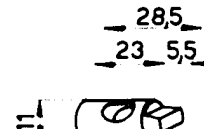
Canne 65-1275



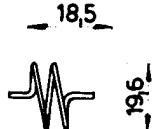
Ressort D075-65



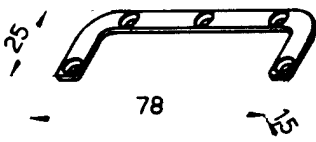
Douille 65-1288



Piston d'arrêt 65-1287



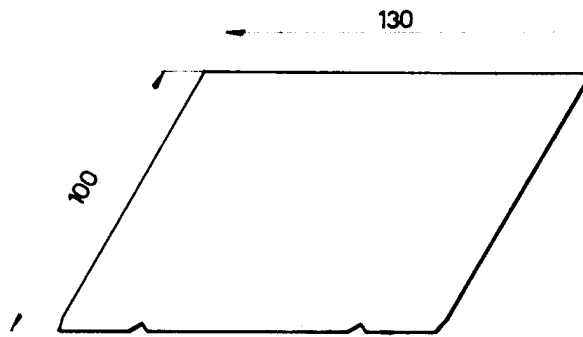
Ressort T196-6



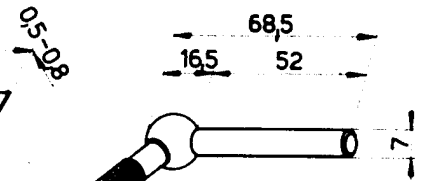
Bride 65-1264



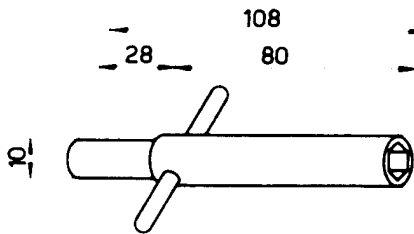
Quince 65-1374



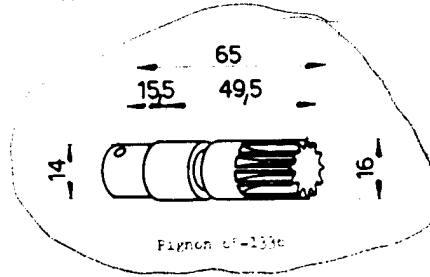
Protecteur 65-1265



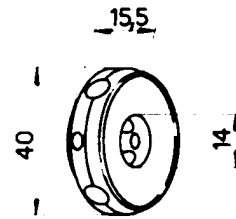
Pivot pour levier 65-1375 avec manette 65-1376



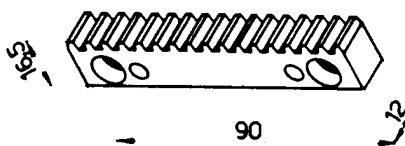
Cif 65-1281



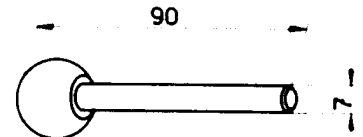
Pignon 65-1330



Croisillon 65-1337



Croisillon 65-1339

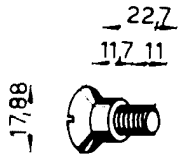


Bras 65-1336 avec boule 40j-410 C22n

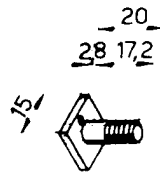


# TOUR 65-70 CHARIOT A MEULER ART.N° 664

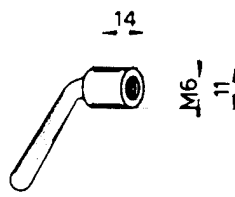
## SCHAUBLIN



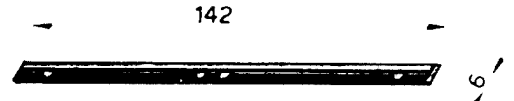
Vis-pivot 65-0223



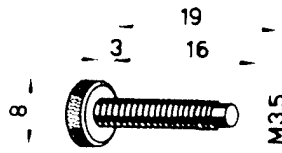
Vis de fixation 65-0224-5



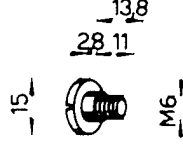
Manivelle 65-145



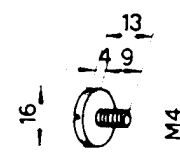
Lardon supérieur 65-0225-12



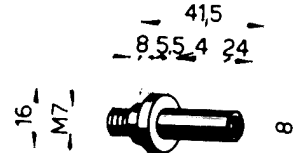
Vis 65-1226-4



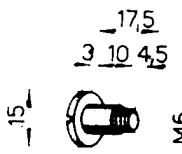
Vis-pivot 65-1227



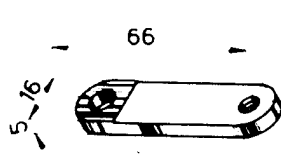
Vis 65-1228



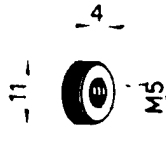
Vis-pivot 65-1225



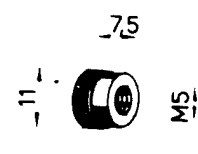
Vis-pivot 65-1229



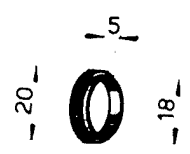
Bielle 65-1224



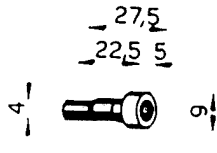
Berou B1 M5x4 407-106



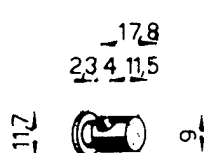
Berou B3 M5x7,5 407-108



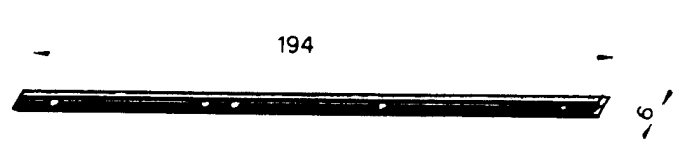
Couvercle 65-0226-6



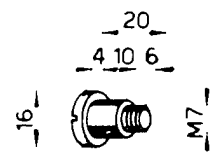
Vis-pivot 65-1228-20



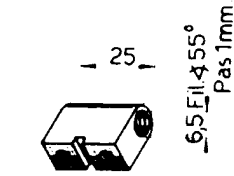
Clou 65-1228



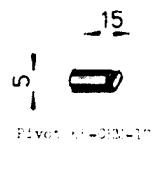
Lardon inférieur 65-1228-1



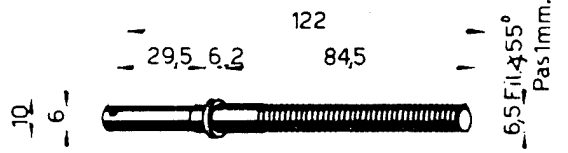
Vis-pivot 65-1228



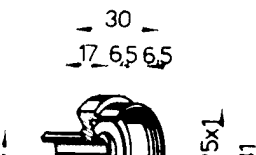
Berou 65-1228



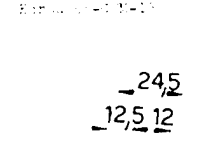
Pivot 65-0228-17



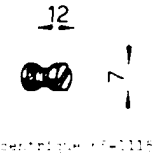
Vis de réglage 65-0228-14



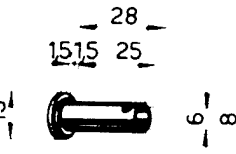
Entre-broches 65-0228-1



Vernier 65-0228-1



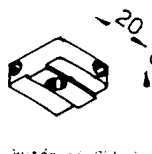
Excentrique 65-1115



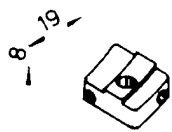
Bouille 65-0228-1



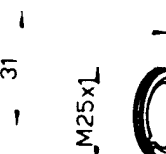
Manivelle 65-0228-1



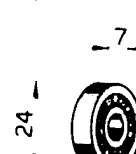
Butée 65-0228-12



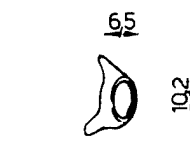
Butée 65-0228-16



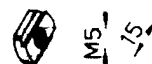
Berou 65-0228-1



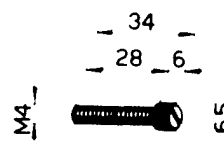
Roulement 65-0228-122



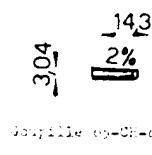
Bronche 65-0228-1



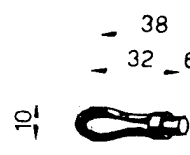
Écrou 65-1228-1



Vis de butée 65-1228-1



Boypille 65-0228-14



Butée simple 65-1228-1

# TOUR 65-70 SCHAUBLIN

# CHARIOT A MEULER ANCIEN MODELE

# ART. N° 664

Technical drawing showing various components of the TOUR 65-70 SCHAUBLIN CHARIOT A MEULER ANCIEN MODELE (ART. N° 664).

Components and their part numbers:

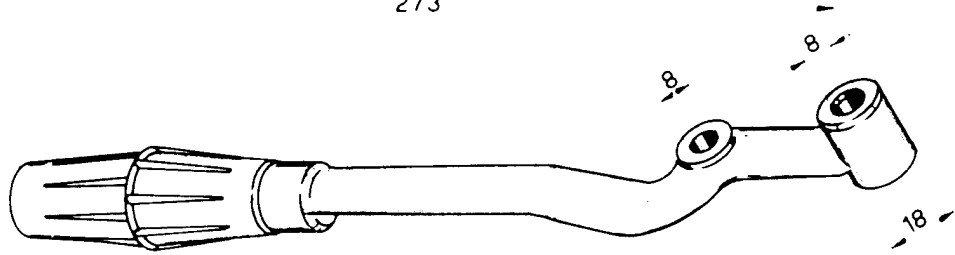
- 11: Bague de serrage
- 12: Bague de serrage
- 13: Bague de serrage
- 14: Bague de serrage
- 15: Bague de serrage
- 16: Bague de serrage
- 17: Bague de serrage
- 18: Bague de serrage
- 19: Bague de serrage
- 20: Bague de serrage
- 21: Bague de serrage
- 22: Bague de serrage
- 23: Bague de serrage
- 24: Bague de serrage
- 25: Bague de serrage
- 26: Bague de serrage
- 27: Bague de serrage
- 28: Bague de serrage
- 29: Bague de serrage
- 30: Bague de serrage
- 31: Bague de serrage
- 32: Bague de serrage
- 33: Ressort
- 34: Ressort
- 35: Ressort
- 36: Ressort
- 37: Ressort
- 38: Ressort
- 39: Ressort
- 40: Ressort
- 41: Ressort
- 42: Ressort
- 43: Ressort
- 44: Ressort
- 45: Ressort
- 46: Ressort
- 47: Ressort
- 48: Ressort
- 49: Ressort
- 50: Ressort
- 51: Ressort
- 52: Ressort
- 53: Ressort
- 54: Ressort
- 55: Ressort
- 56: Ressort
- 57: Ressort
- 58: Ressort
- 59: Ressort
- 60: Ressort
- 61: Ressort
- 62: Ressort
- 63: Ressort
- 64: Ressort
- 65: Ressort
- 66: Ressort
- 67: Ressort
- 68: Ressort
- 69: Ressort
- 70: Ressort
- 71: Ressort
- 72: Ressort
- 73: Ressort
- 74: Ressort
- 75: Ressort
- 76: Ressort
- 77: Ressort
- 78: Ressort
- 79: Ressort
- 80: Ressort
- 81: Ressort
- 82: Ressort
- 83: Ressort
- 84: Ressort
- 85: Ressort
- 86: Ressort
- 87: Ressort
- 88: Ressort
- 89: Ressort
- 90: Ressort
- 91: Ressort
- 92: Ressort
- 93: Ressort
- 94: Ressort
- 95: Ressort
- 96: Ressort
- 97: Ressort
- 98: Ressort
- 99: Ressort
- 100: Ressort
- 101: Ressort
- 102: Ressort
- 103: Ressort
- 104: Ressort
- 105: Ressort
- 106: Ressort
- 107: Ressort
- 108: Ressort
- 109: Ressort
- 110: Ressort
- 111: Ressort
- 112: Ressort
- 113: Ressort
- 114: Ressort
- 115: Ressort
- 116: Ressort
- 117: Ressort
- 118: Ressort
- 119: Ressort
- 120: Ressort
- 121: Ressort
- 122: Ressort
- 123: Ressort
- 124: Ressort
- 125: Ressort
- 126: Ressort
- 127: Ressort
- 128: Ressort
- 129: Ressort
- 130: Ressort
- 131: Ressort
- 132: Ressort
- 133: Ressort
- 134: Ressort
- 135: Ressort
- 136: Ressort
- 137: Ressort
- 138: Ressort
- 139: Ressort
- 140: Ressort
- 141: Ressort
- 142: Ressort
- 143: Ressort
- 144: Ressort
- 145: Ressort
- 146: Ressort
- 147: Ressort
- 148: Ressort
- 149: Ressort
- 150: Ressort

Dimensions and specifications:

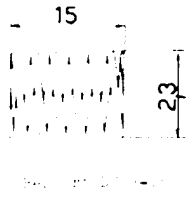
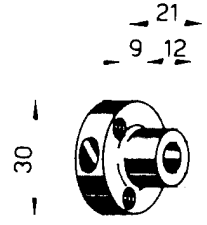
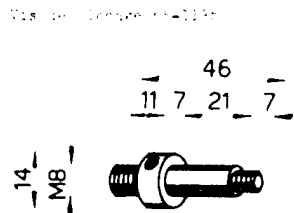
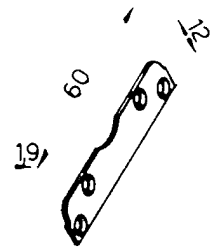
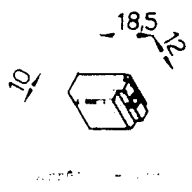
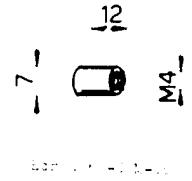
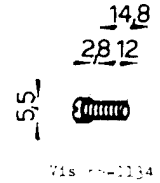
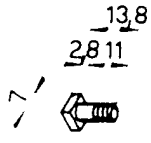
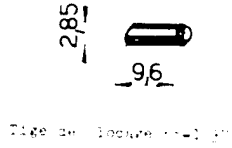
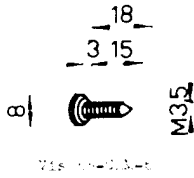
- 65 Fil. Δ
- 55° Pas 1mm
- 159 Pas 0,75
- 65 Fil. Δ
- 55° Pas 1mm
- 65 Fil. Δ
- 55° Pas 1mm
- M3,5
- M4
- M5
- M6
- M7
- M8
- M10
- M12
- M15
- M16
- M20
- M24
- M30
- M36
- M42
- M48
- M54
- M60
- M66
- M72
- M78
- M84
- M90
- M96
- M102
- M108
- M114
- M120
- M126
- M132
- M138
- M144
- M150
- M156
- M162
- M168
- M174
- M180
- M186
- M192
- M198
- M204
- M210
- M216
- M222
- M228
- M234
- M240
- M246
- M252
- M258
- M264
- M270
- M276
- M282
- M288
- M294
- M300
- M306
- M312
- M318
- M324
- M330
- M336
- M342
- M348
- M354
- M360
- M366
- M372
- M378
- M384
- M390
- M396
- M402
- M408
- M414
- M420
- M426
- M432
- M438
- M444
- M450
- M456
- M462
- M468
- M474
- M480
- M486
- M492
- M498
- M504
- M510
- M516
- M522
- M528
- M534
- M540
- M546
- M552
- M558
- M564
- M570
- M576
- M582
- M588
- M594
- M600
- M606
- M612
- M618
- M624
- M630
- M636
- M642
- M648
- M654
- M660
- M666
- M672
- M678
- M684
- M690
- M696
- M702
- M708
- M714
- M720
- M726
- M732
- M738
- M744
- M750
- M756
- M762
- M768
- M774
- M780
- M786
- M792
- M798
- M804
- M810
- M816
- M822
- M828
- M834
- M840
- M846
- M852
- M858
- M864
- M870
- M876
- M882
- M888
- M894
- M900
- M906
- M912
- M918
- M924
- M930
- M936
- M942
- M948
- M954
- M960
- M966
- M972
- M978
- M984
- M990
- M996
- M1002
- M1008
- M1014
- M1020
- M1026
- M1032
- M1038
- M1044
- M1050
- M1056
- M1062
- M1068
- M1074
- M1080
- M1086
- M1092
- M1098
- M1104
- M1110
- M1116
- M1122
- M1128
- M1134
- M1140
- M1146
- M1152
- M1158
- M1164
- M1170
- M1176
- M1182
- M1188
- M1194
- M1200
- M1206
- M1212
- M1218
- M1224
- M1230
- M1236
- M1242
- M1248
- M1254
- M1260
- M1266
- M1272
- M1278
- M1284
- M1290
- M1296
- M1302
- M1308
- M1314
- M1320
- M1326
- M1332
- M1338
- M1344
- M1350
- M1356
- M1362
- M1368
- M1374
- M1380
- M1386
- M1392
- M1398
- M1404
- M1410
- M1416
- M1422
- M1428
- M1434
- M1440
- M1446
- M1452
- M1458
- M1464
- M1470
- M1476
- M1482
- M1488
- M1494
- M1500
- M1506
- M1512
- M1518
- M1524
- M1530
- M1536
- M1542
- M1548
- M1554
- M1560
- M1566
- M1572
- M1578
- M1584
- M1590
- M1596
- M1602
- M1608
- M1614
- M1620
- M1626
- M1632
- M1638
- M1644
- M1650
- M1656
- M1662
- M1668
- M1674
- M1680
- M1686
- M1692
- M1698
- M1704
- M1710
- M1716
- M1722
- M1728
- M1734
- M1740
- M1746
- M1752
- M1758
- M1764
- M1770
- M1776
- M1782
- M1788
- M1794
- M1800
- M1806
- M1812
- M1818
- M1824
- M1830
- M1836
- M1842
- M1848
- M1854
- M1860
- M1866
- M1872
- M1878
- M1884
- M1890
- M1896
- M1902
- M1908
- M1914
- M1920
- M1926
- M1932
- M1938
- M1944
- M1950
- M1956
- M1962
- M1968
- M1974
- M1980
- M1986
- M1992
- M1998
- M2004
- M2010
- M2016
- M2022
- M2028
- M2034
- M2040
- M2046
- M2052
- M2058
- M2064
- M2070
- M2076
- M2082
- M2088
- M2094
- M2100
- M2106
- M2112
- M2118
- M2124
- M2130
- M2136
- M2142
- M2148
- M2154
- M2160
- M2166
- M2172
- M2178
- M2184
- M2190
- M2196
- M2202
- M2208
- M2214
- M2220
- M2226
- M2232
- M2238
- M2244
- M2250
- M2256
- M2262
- M2268
- M2274
- M2280
- M2286
- M2292
- M2298
- M2304
- M2310
- M2316
- M2322
- M2328
- M2334
- M2340
- M2346
- M2352
- M2358
- M2364
- M2370
- M2376
- M2382
- M2388
- M2394
- M2400
- M2406
- M2412
- M2418
- M2424
- M2430
- M2436
- M2442
- M2448
- M2454
- M2460
- M2466
- M2472
- M2478
- M2484
- M2490
- M2496
- M2502
- M2508
- M2514
- M2520
- M2526
- M2532
- M2538
- M2544
- M2550
- M2556
- M2562
- M2568
- M2574
- M2580
- M2586
- M2592
- M2598
- M2604
- M2610
- M2616
- M2622
- M2628
- M2634
- M2640
- M2646
- M2652
- M2658
- M2664
- M2670
- M2676
- M2682
- M2688
- M2694
- M2700
- M2706
- M2712
- M2718
- M2724
- M2730
- M2736
- M2742
- M2748
- M2754
- M2760
- M2766
- M2772
- M2778
- M2784
- M2790
- M2796
- M2802
- M2808
- M2814
- M2820
- M2826
- M2832
- M2838
- M2844
- M2850
- M2856
- M2862
- M2868
- M2874
- M2880
- M2886
- M2892
- M2898
- M2904
- M2910
- M2916
- M2922
- M2928
- M2934
- M2940
- M2946
- M2952
- M2958
- M2964
- M2970
- M2976
- M2982
- M2988
- M2994
- M3000

# TOUR 65-70 CHARIOT A MEULER ART. N° 664

273



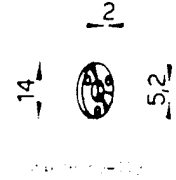
LEVANT d'axe avec  
colgnet 40x10-5



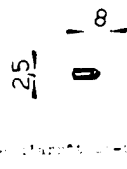
Écrou de levure sup. 11-1144

Écrou 11-1144

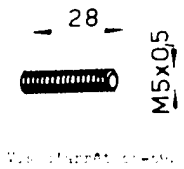
Disque 11-1147



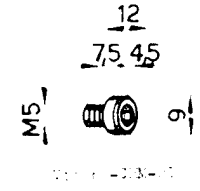
Disque 11-1144



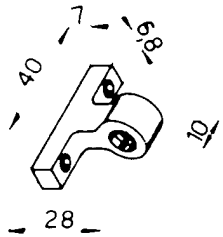
Disque 11-1144



Vis chariot 11-1145



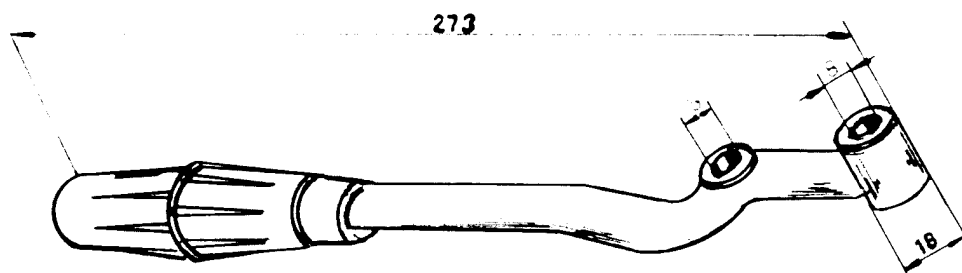
Vis 11-1134



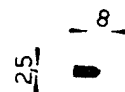
Disque 11-1144

# TOUR 65-70 CHARIOT A MEULER ANCIEN MODELE

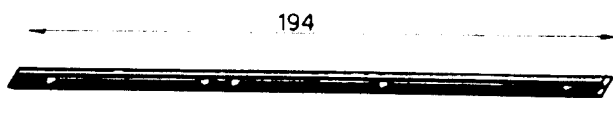
ART. N° 664



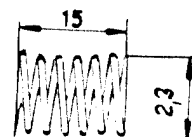
Levier de ligne avec poignée 46-66-67



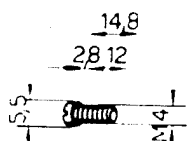
Roller 46-66-67



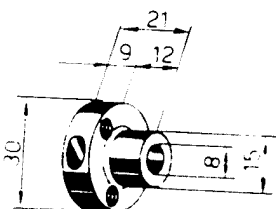
Lame intérieure 46-66-67



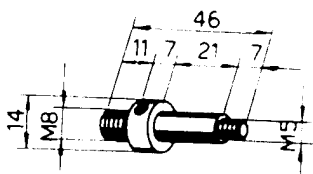
Ressort 60/3-16



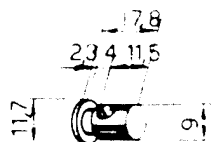
Ressort 46-66-67



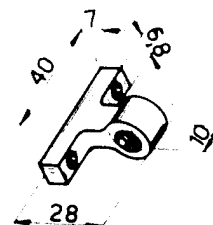
Tourelle 46-66-67



Traction 46-66-67



Directeur 46-66-67



Support 46-66-67

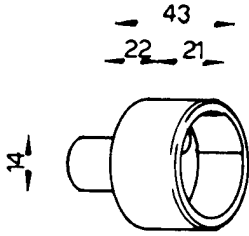


Vis 46-66-67

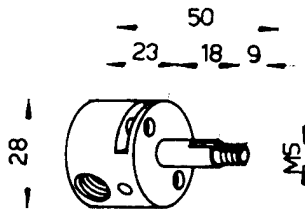
TOUR 65-70  
TOUR 65-70

PORTE - TARAUD  
PORTE - FILIERE

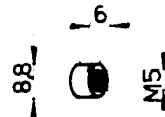
ART. N° 1301  
ART. N° 1320



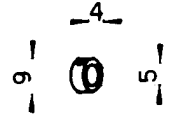
Boite porte-taroud



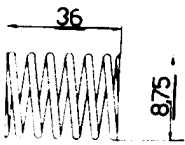
Boite porte-taroud et filiere



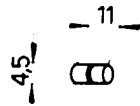
Boite porte-taroud



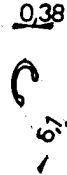
Boite porte-taroud



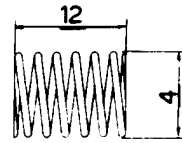
Resort porte-taroud



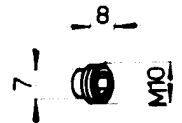
Boite porte-taroud



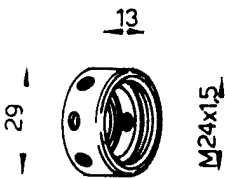
Boite porte-taroud



Resort porte-taroud



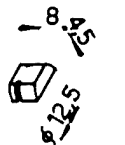
Vis porte-taroud



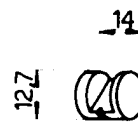
Boite porte-taroud



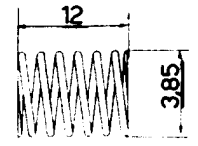
Boite porte-taroud



Boite porte-taroud



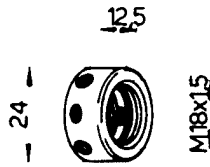
Boite porte-taroud



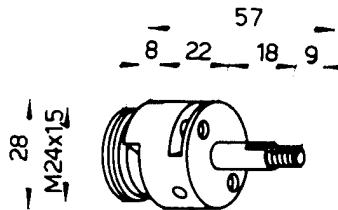
Resort porte-taroud



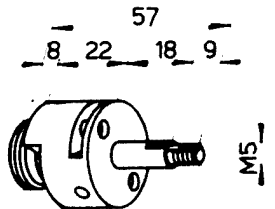
Boite porte-taroud



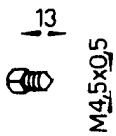
Boite porte-taroud



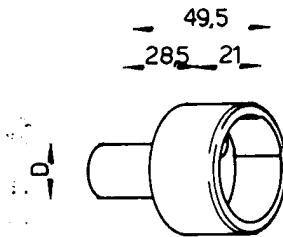
Boite porte-taroud



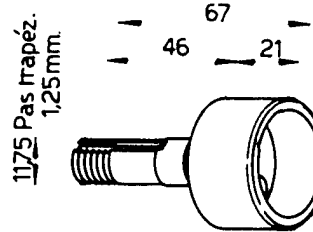
Boite porte-taroud



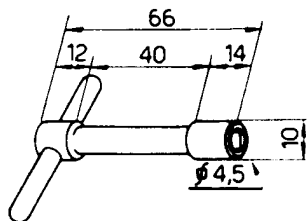
Boite porte-taroud



Boite porte-taroud



Boite porte-taroud

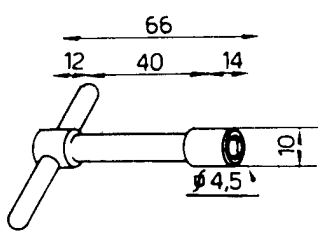
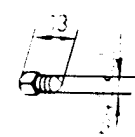
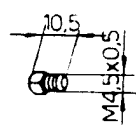
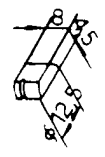
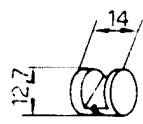
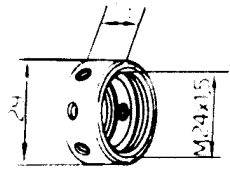
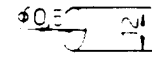
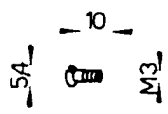
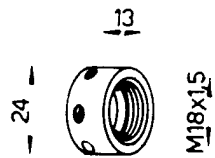
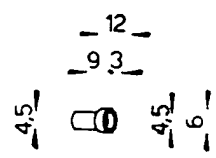
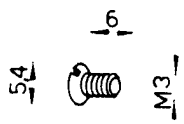
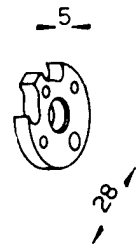
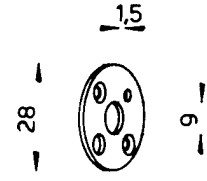
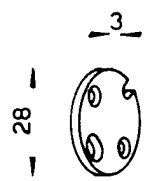
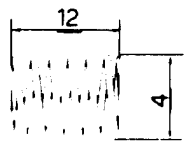
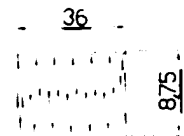
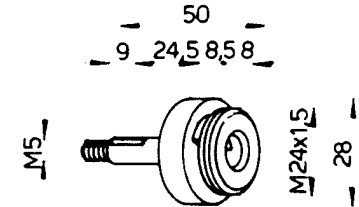
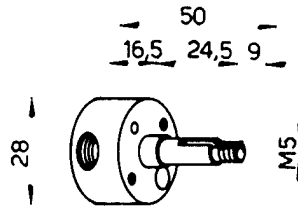
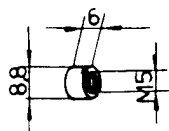
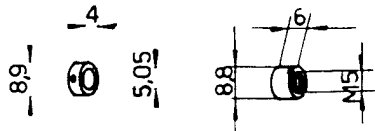
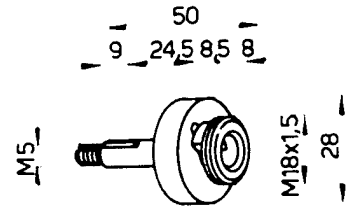
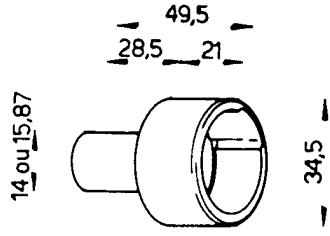
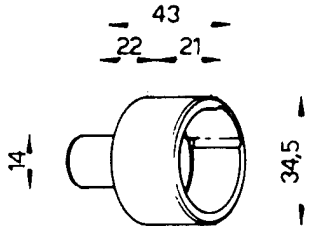


Boite porte-taroud

TOUR 65-70  
 TOUR 65-70  
 SCHAUBLIN

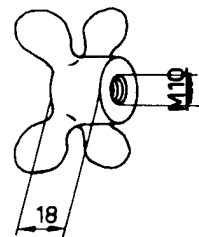
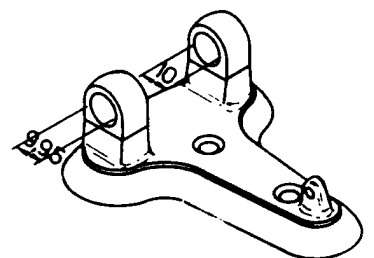
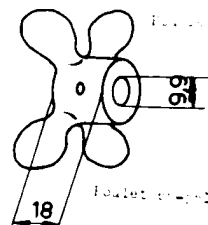
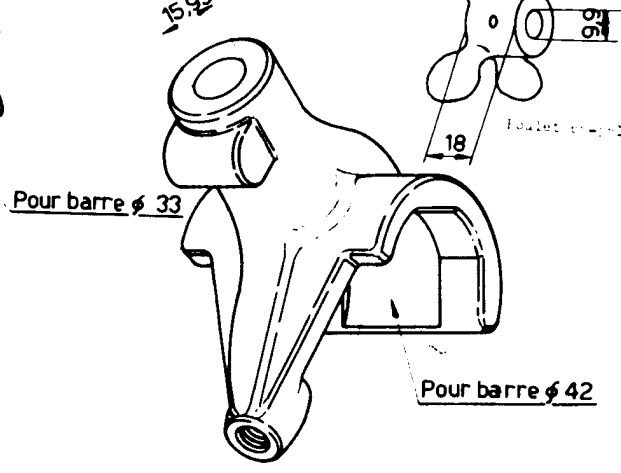
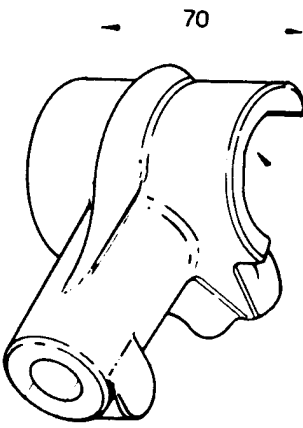
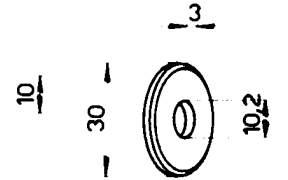
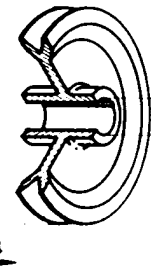
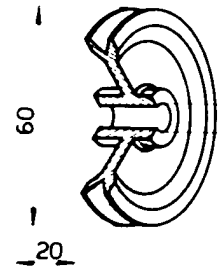
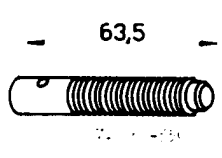
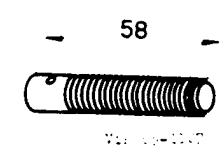
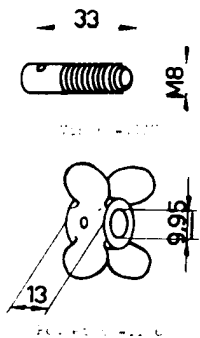
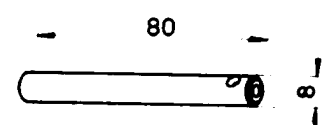
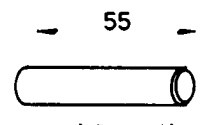
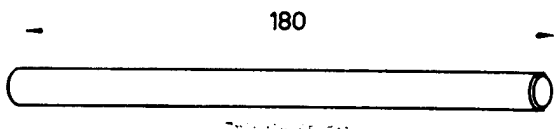
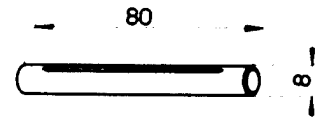
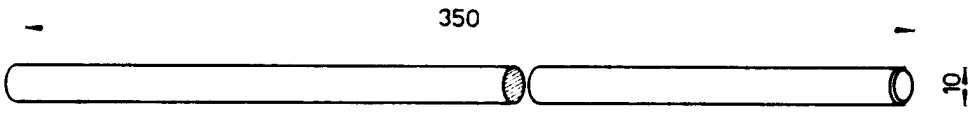
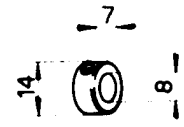
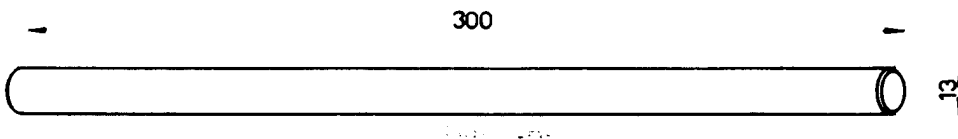
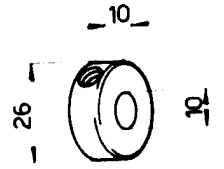
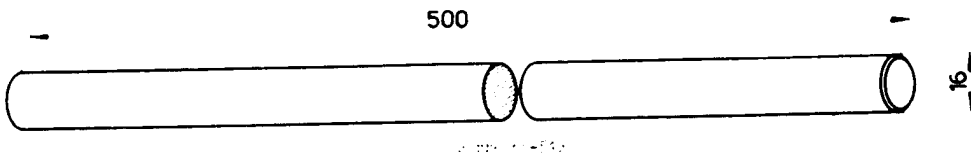
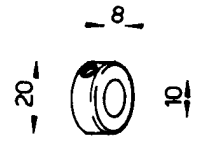
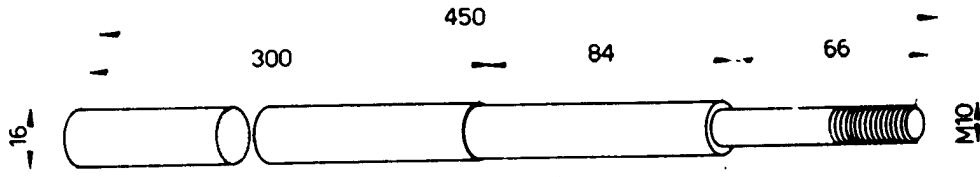
PORTE - TARAUD  
 PORTE - FILIERE  
 ANCIEN MODELE

ART. N° 1301  
 ART. N° 1320



# TOUR 65-70 SCHAUBLIN

# RENOIS TENDEURS

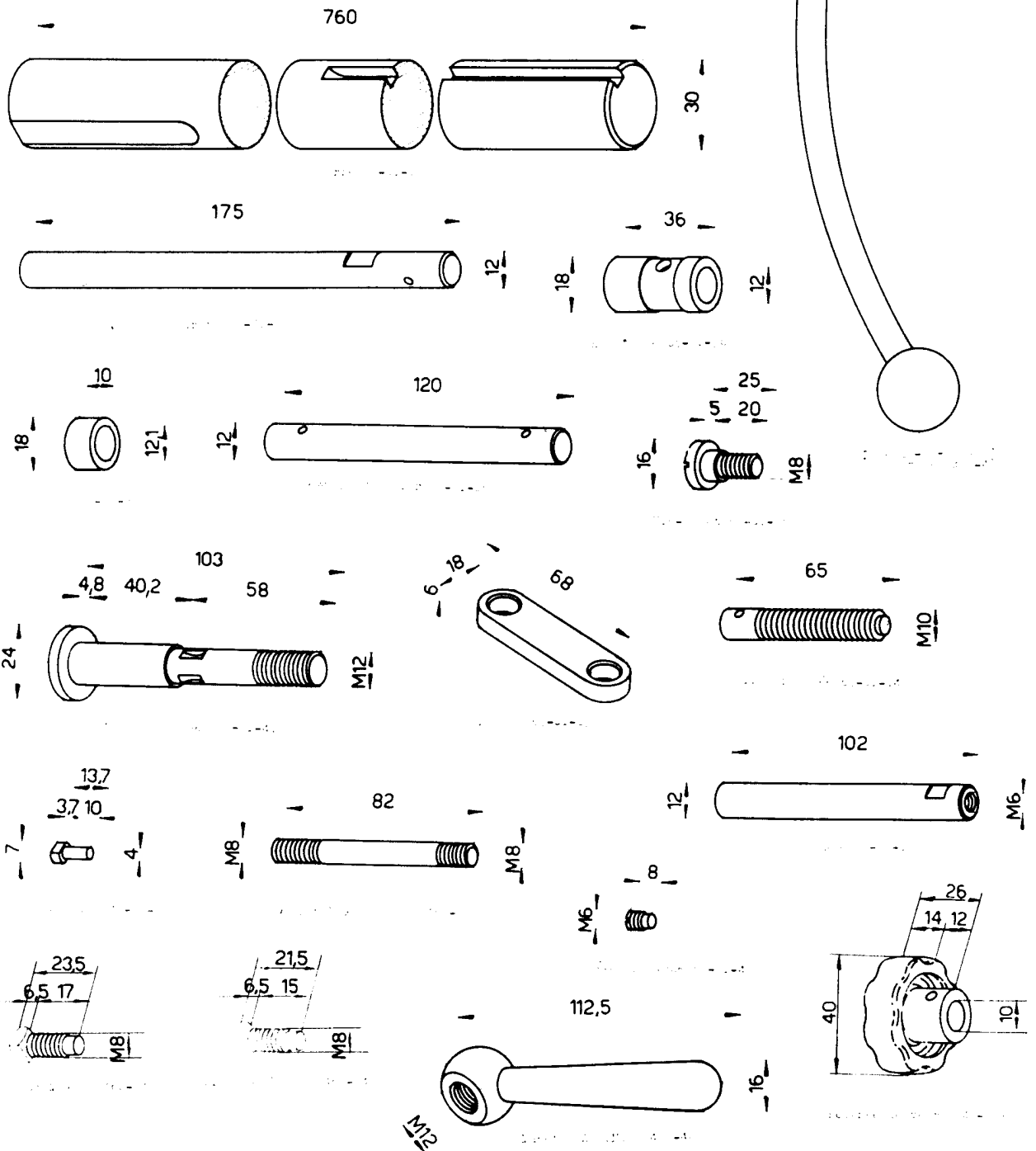
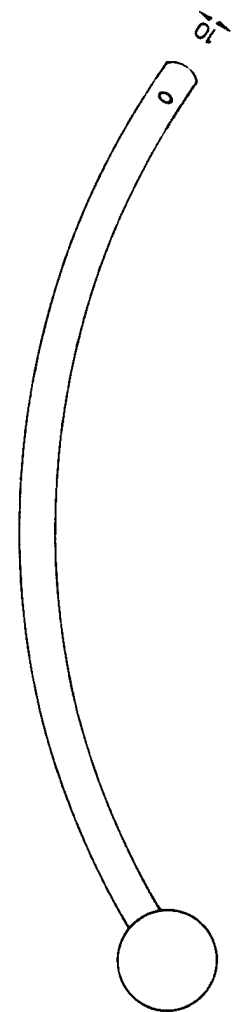
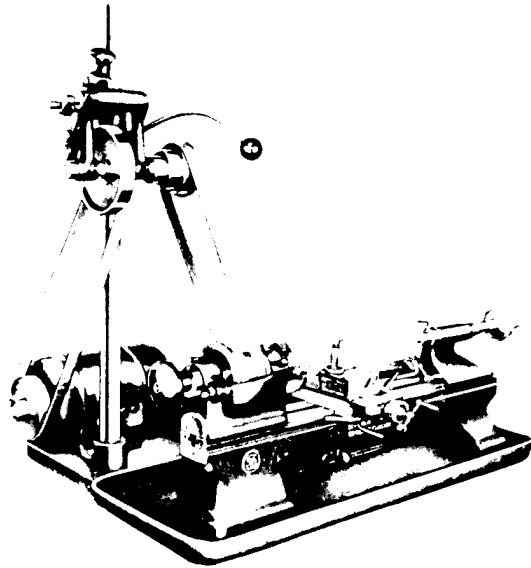


1595

70

TOUR 65-70  
SCHAUBLIN

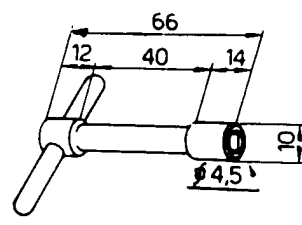
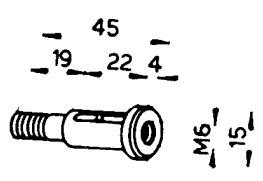
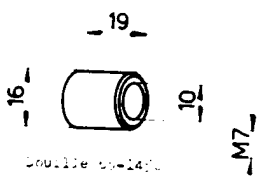
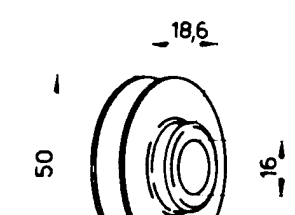
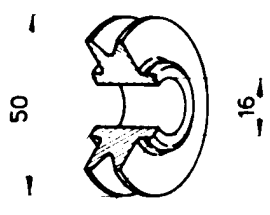
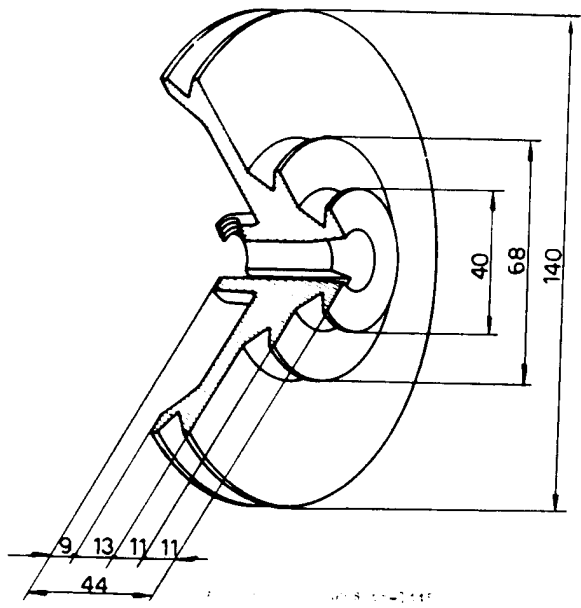
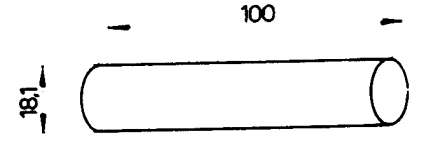
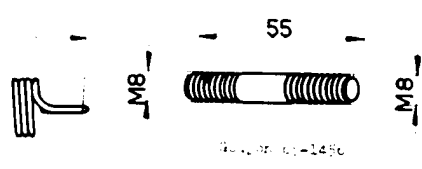
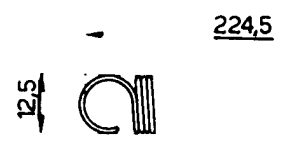
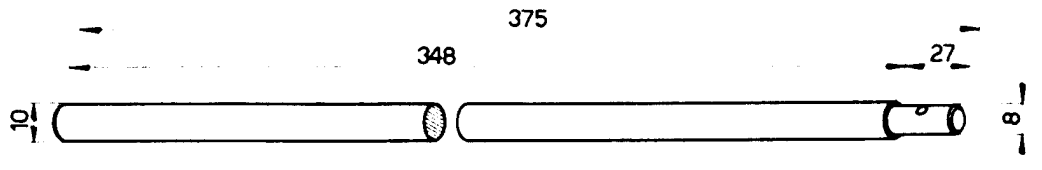
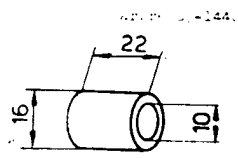
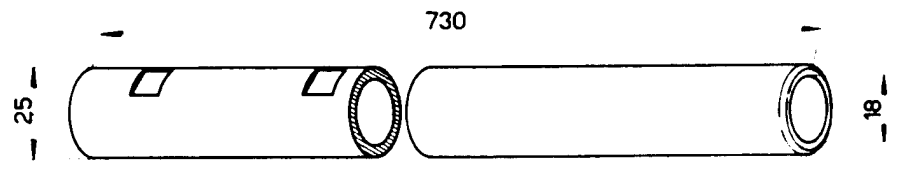
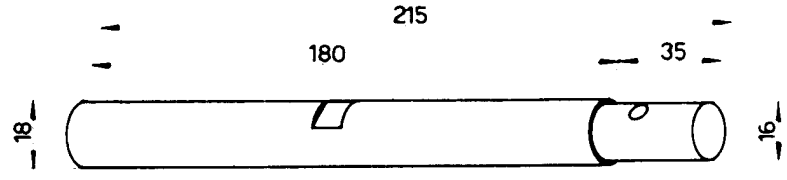
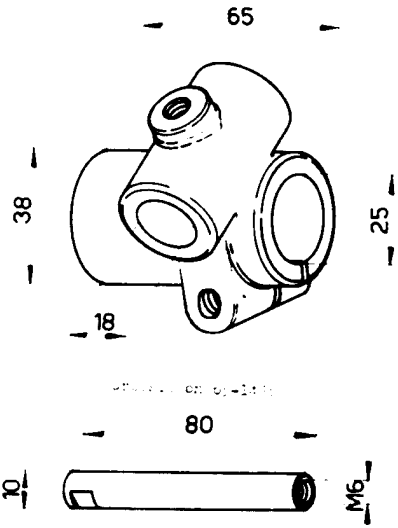
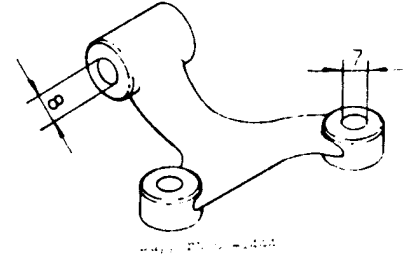
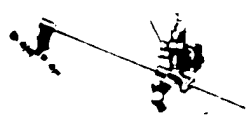
COMMANDE INDIVIDUELLE



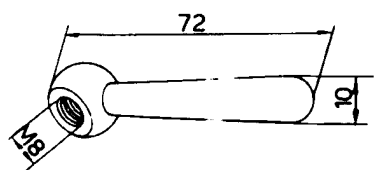
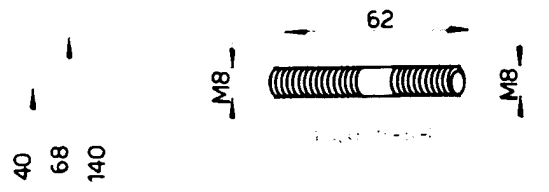
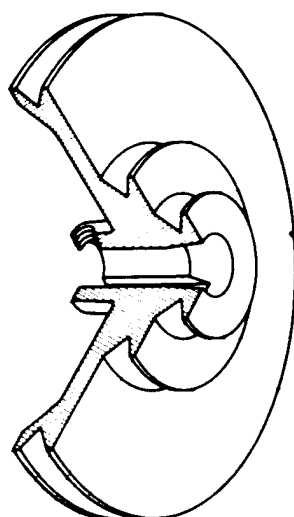
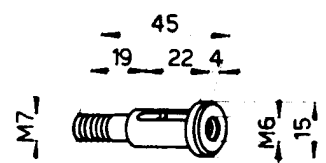
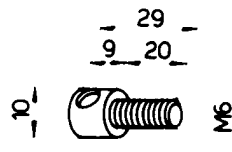
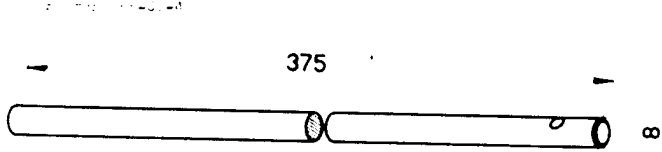
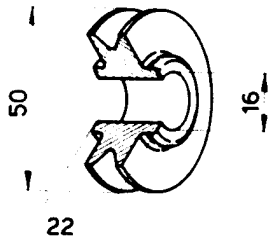
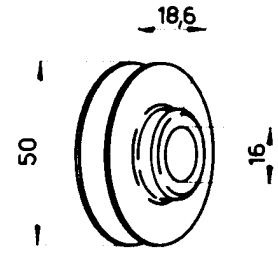
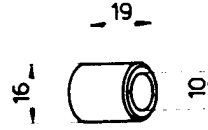
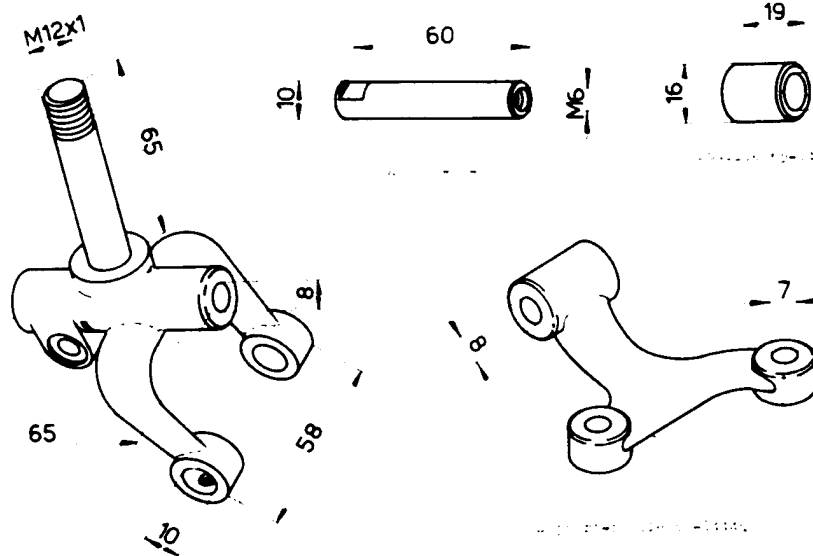
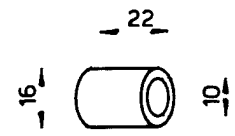
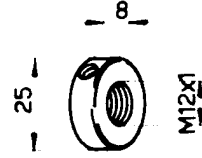
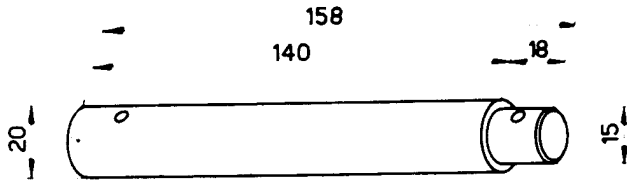


# TOUR 65-70 TENDEUR DE RECT. ET FRAIS. ART. N° 1442

## SCHAUBLIN ANCIEN MODELE



TOUR 65-70    TENDEUR DE RECT. ET FRAIS.    ART. N° 1442  
 SCHAUBLIN



9, 13, 11, 11  
 44

# TOUR 65-70 SCHAUBLIN

# RENOIS TENDEURS

