



PARTS LIST

FOR

HARDINGE PRECISION TOOL ROOM LATHE

MODEL HLV

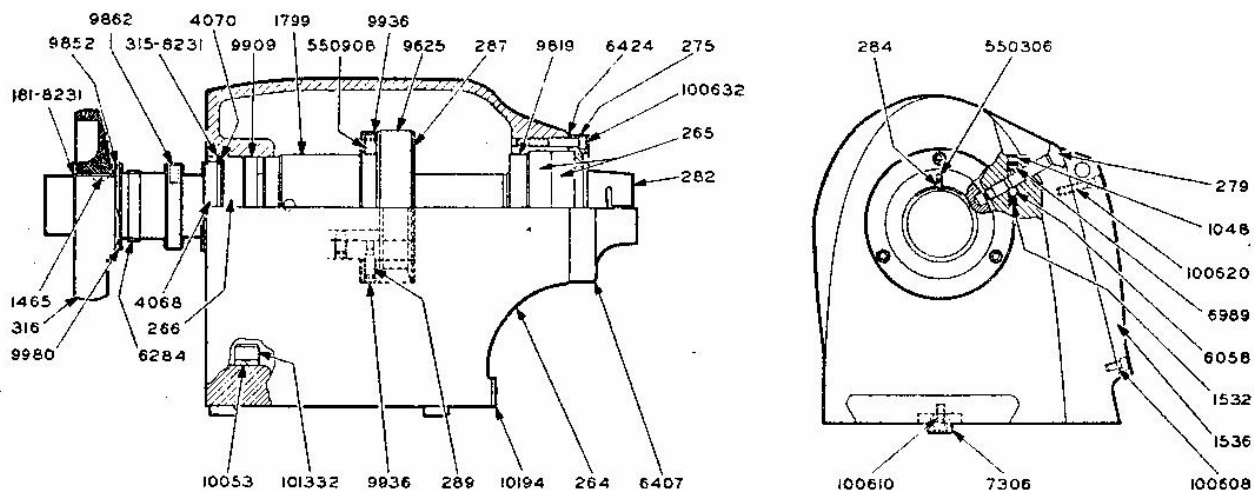
HARDINGE BROTHERS, INC.

ELMIRA, NEW YORK

PARTS LIST

FOR HARDINGE HLV PRECISION TOOL ROOM LATHE

HEADSTOCK



Part No.	No. Used	Part Name	Part No.	No. Used	Part Name	Part No.	No. Used	Part Name
264	1	Headstock	1799	1	Spindle Sleeve	9862	1	Spring Pin
265	1	Front Bearing	4068	1	Clamp Nut	9909	1	Shoulder Ring
266	1	Rear Bearing	4070	2	Spring Washers	9936	3	Lock Screws
275	1	Front Cap	6058	1	Lock Ball	9980	1	Spacer
279	1	Lock Pin	6284	1	Spindle Gear	10053	4	Lock Washers
282	1	Spindle Assembly	6407	1	Splash Guard	10194	1	Head Seal
284	1	Key Screw	6424	1	Gasket	100608	2	Rear Cover Screws
287	1	Spindle Pulley	6989	1	Lock Pin Screw	100610	2	Screws
289	2	Lock Screws	7306	2	Keys	100620	2	Rear Cover Screws
316	1	Handwheel	181-8231	1	Retaining Ring	100632	3	Front Cap Screws
1048	1	Lock Screw	315-8231	1	Retaining Ring	101332	4	Head Bolts
1465	1	Key	9625	1	Head Bolt	550306	1	Lock Screw
1532	1	Spring	9819	1	Front Bearing Nut	550908	1	Balance Screw
1536	1	Rear Cover	9852	1	Wave Washer			

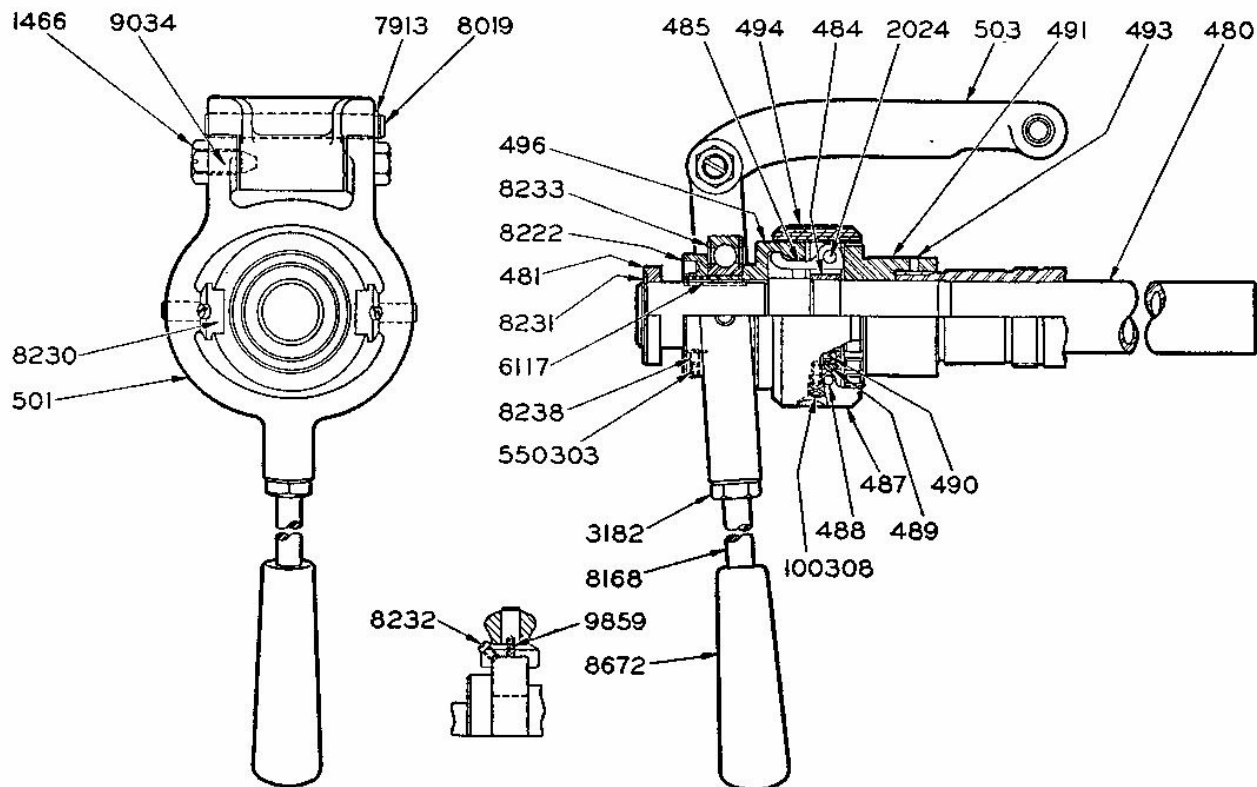
WHEN ORDERING, GIVE PART NUMBER, NAME OF PART, QUANTITY WANTED AND SERIAL NUMBER WHICH IS STAMPED ON HEADSTOCK FRAME

HARDINGE BROTHERS, INC., ELMIRA, N. Y., U. S. A.

PARTS LIST

FOR HARDINGE HLV PRECISION TOOL ROOM LATHE

COLLET CLOSER ASSEMBLY



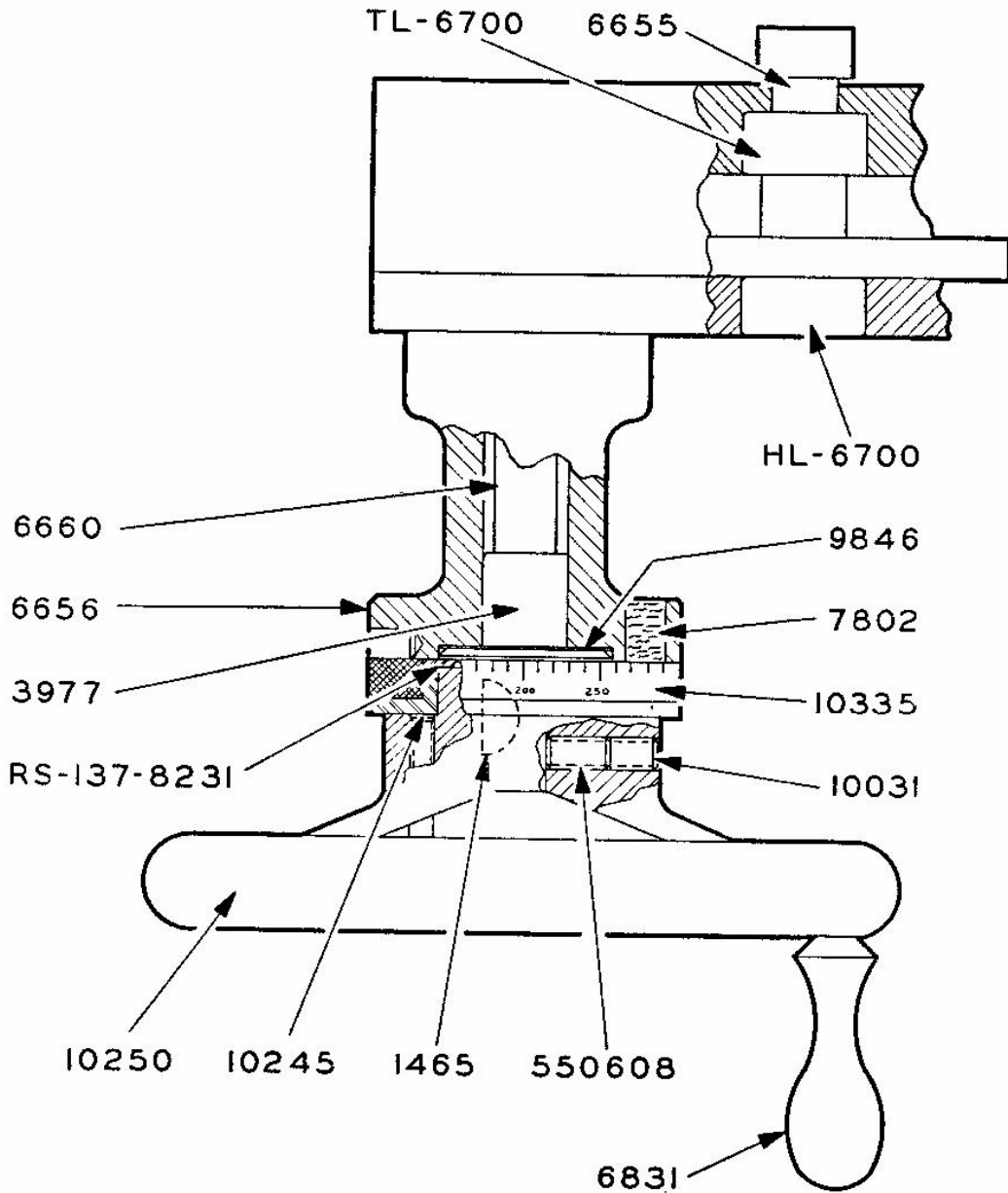
Part No.	No. Used	Part Name	Part No.	No. Used	Part Name	Part No.	No. Used	Part Name
480	1	Spindle	494	1	Shell Guard	8222	1	Bearing Retaining Nut
481	1	Stop Ring	496	1	Clutch Cone	8230	2	Swivel Blocks
484	1	Clutch Finger Bracket	501	1	Lever Yoke	8231	1	Snap Ring for Stop Ring
485	3	Clutch Fingers	503	1	Connecting Link	8232	2	Bearing Screws
487	1	Adjusting Finger	1466	2	Pivot Screw Nuts	8233	1	Bearing
488	1	Adjusting Finger Pin	2024	3	Clutch Finger Pins	8238	1	Retaining Nut Screw
489	1	Cap for Spring	3182	1	Handle Lock Nut	8672	1	Lever Handle
490	1	Adjusting Finger Spring	6117	1	Clutch Cone Key	9034	2	Pivot Screws
491	1	Adjusting Nut (Complete with Key)	7913	1	Link Pin Snap Ring	9859	2	Swivel Block Springs
493	1	Key	8019	1	Link Pin	100308	4	Guard Screws
			8168	1	Handle	550303	1	Lock Screw

WHEN ORDERING, GIVE PART NUMBER, NAME OF PART, QUANTITY WANTED AND SERIAL NUMBER WHICH IS STAMPED ON HEADSTOCK FRAME

HARDINGE BROTHERS, INC., ELMIRA, N. Y., U. S. A.

**PARTS LIST
FOR HARDINGE HLV PRECISION TOOL ROOM LATHE**

CARRIAGE HANDWHEEL ASSEMBLY



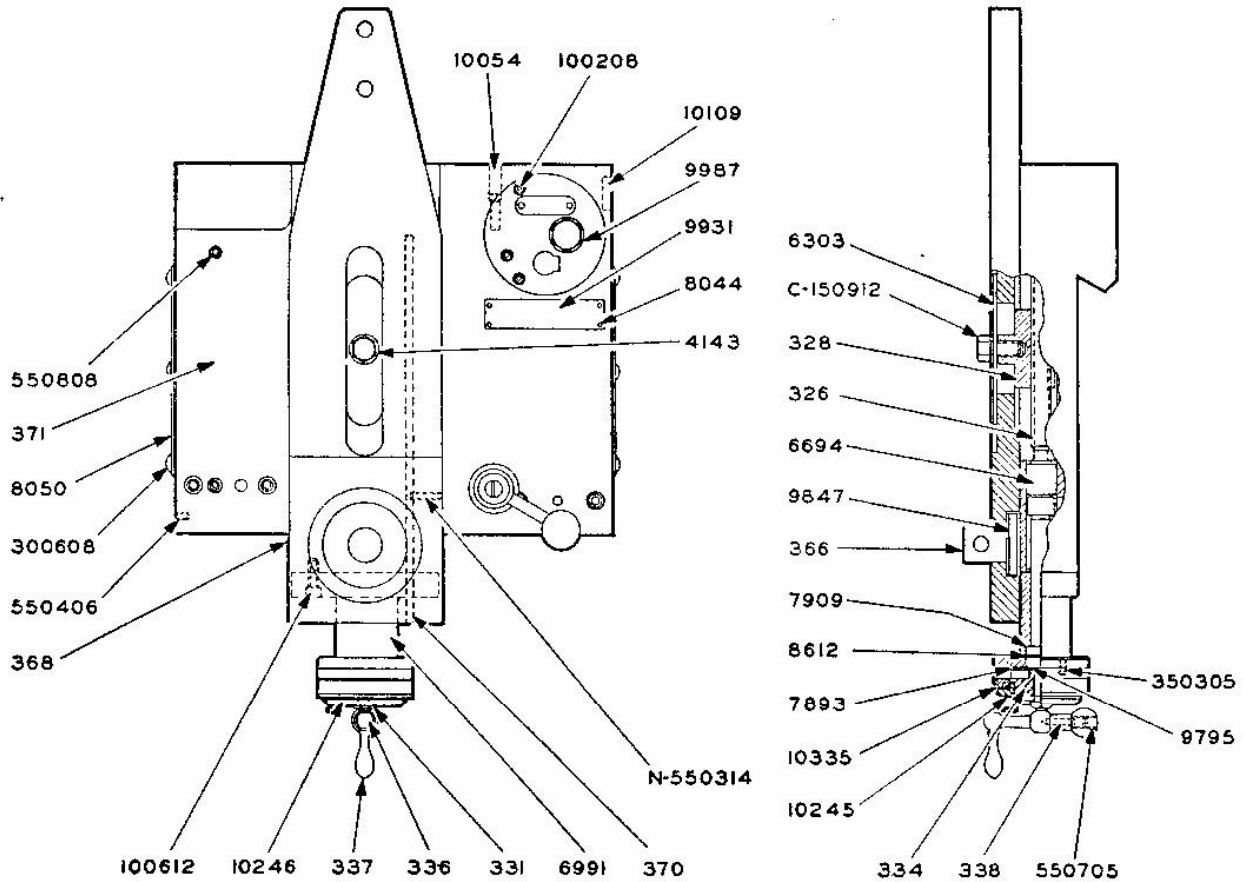
Part No.	No. Used	Part Name	Part No.	No. Used	Part Name	Part No.	No. Used	Part Name
1465	1	Key	TL-6700	1	Upper Bearing	10031	1	Lock Screw
3977	2	Handwheel Bearings	6831	1	Handle	10245	1	Plug
6655	1	Pinion With Gear	7802	4	Felt Plugs	10250	1	Handwheel and Lock Screw
6656	1	Handwheel Bearing	RS-137-			10335	1	Dial and Support
6660	1	Shaft	8231	1	Retaining Ring	550608	1	Lock Screw
HL-6700	1	Lower Bearing	9846	1	Shim			

WHEN ORDERING, GIVE PART NUMBER, NAME OF PART, QUANTITY WANTED AND SERIAL NUMBER WHICH IS STAMPED ON HEADSTOCK FRAME

HARDINGE BROTHERS, INC., ELMIRA, N. Y., U. S. A.

PARTS LIST
FOR HARDINGE HLV PRECISION TOOL ROOM LATHE

CARRIAGE AND CROSS SLIDE ASSEMBLY



Part No.	No. Used	Part Name	Part No.	No. Used	Part Name	Part No.	No. Used	Part Name
326	1	Cross Feed Screw	6694	1	Bearing	10245	1	Plug
328	1	Cross Slide Nut	6991	1	End Plate	10246	1	Washer and Lock Screw Assembly
331	1	Nut	7893	1	Bearing Plate	10335	1	Dial and Support Assembly
334	1	Bushing	7909	2	Bearings	100208	3	Oil Screws
336	1	Crank	8044	4	Escutcheon Pins	100612	4	Plate Screws
337	1	Handle	8050	2	Wipers	C-150912	1	Clamping Screw
338	1	Lock Screw	8612	1	Shim	300608	6	Wiper Screws
366	1	Draw Bolt	9795	1	Spacer	350305	4	Screws
368	1	Cross Slide	9847	2	Shims	N-550314	5	Gib Screws
370	1	Gib	9931	1	Instruction Plate	550406	1	Plug Screw
371	1	Carriage	9987	1	Oilier	550705	1	Crank Screw
4143	1	Washer	10054	1	Plug	550808	3	Screws
6303	1	Cover	10109	1	Oil Window			

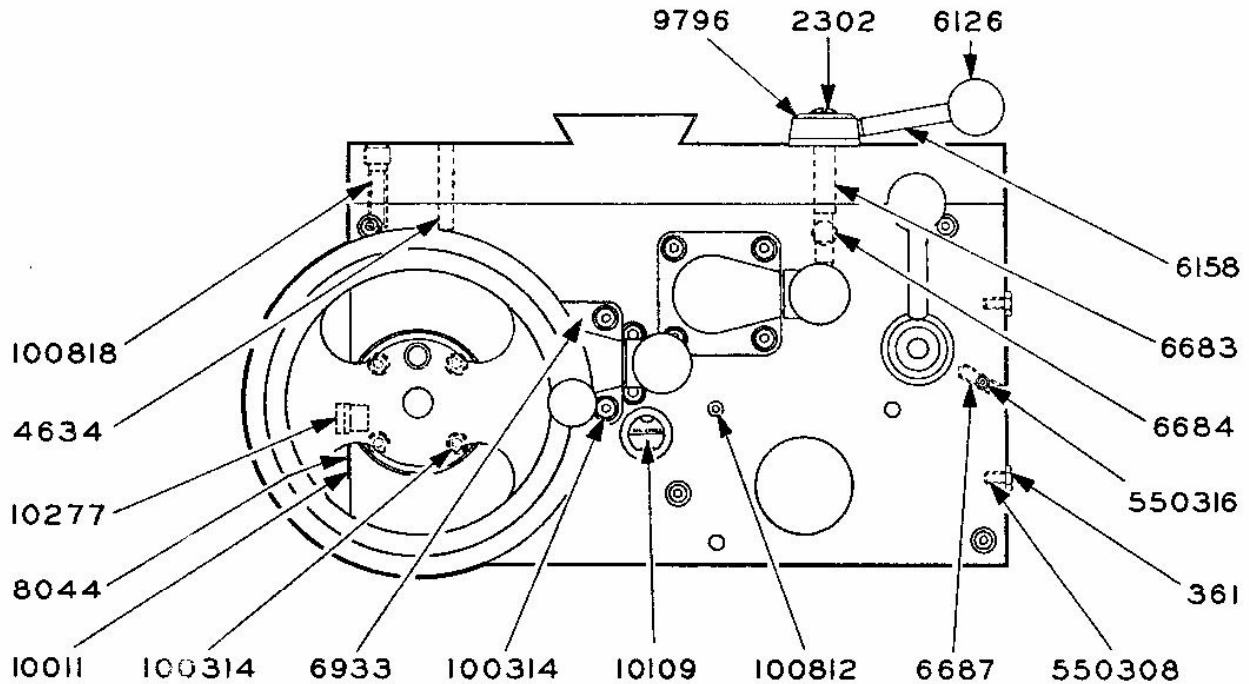
WHEN ORDERING, GIVE PART NUMBER, NAME OF PART, QUANTITY WANTED AND SERIAL NUMBER WHICH IS STAMPED ON HEADSTOCK FRAME

HARDINGE BROTHERS, INC., ELMIRA, N. Y., U. S. A.

PARTS LIST

FOR HARDINGE HLV PRECISION TOOL ROOM LATHE

APRON ASSEMBLY

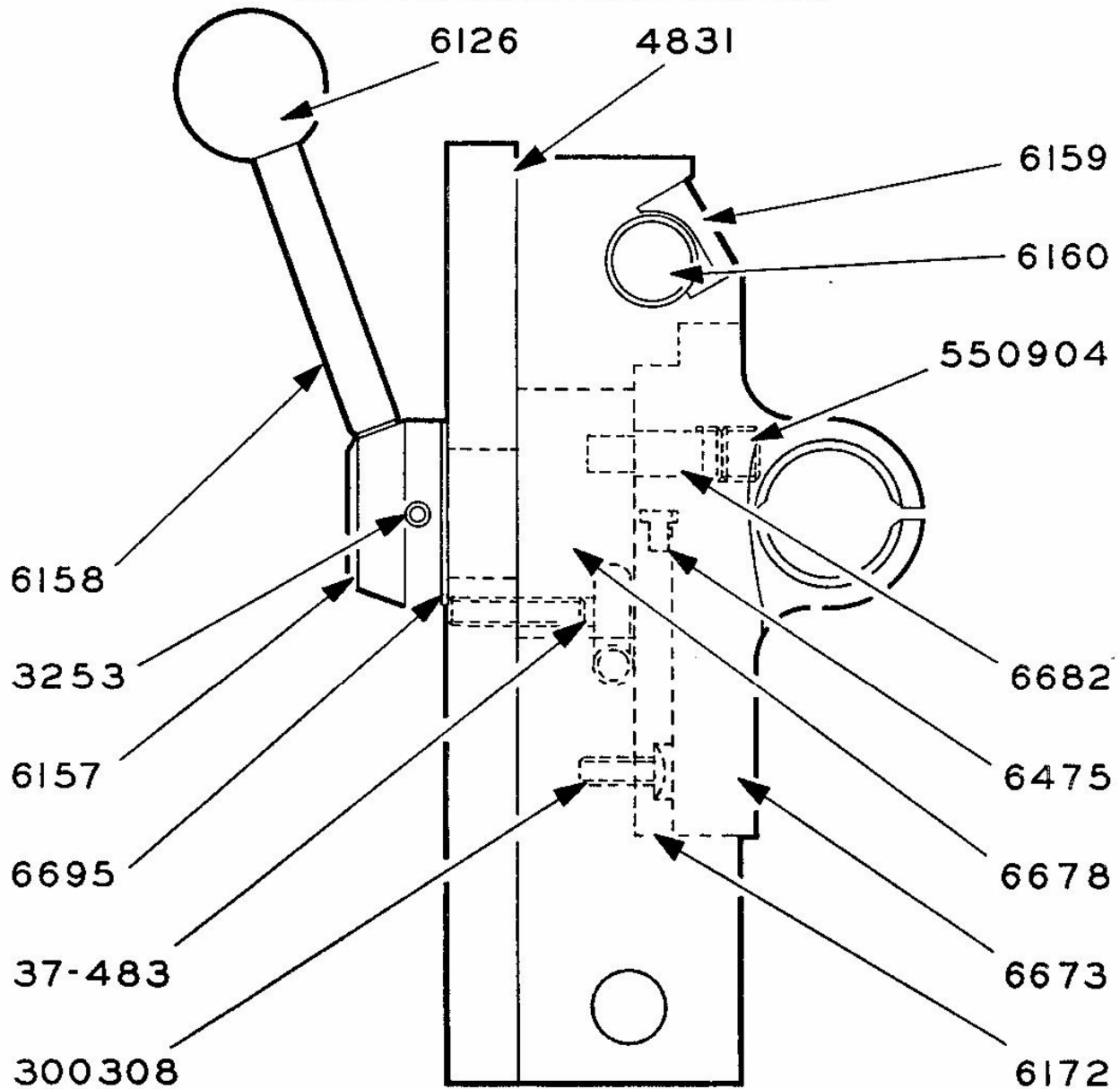


Part No.	No. Used	Part Name	Part No.	No. Used	Part Name
361	2	Nuts	9796	1	Collar
2302	1	Screw	10011	1	Instruction Plate
4634	2	Dowels	10109	1	Oil Window
6126	3	Ball Handles	10277	1	Oil Cup
6158	3	Handles	100314	12	Screws
6683	1	Eccentric Bolt	100812	3	Housing Screws
6684	1	Lock Bolt	100818	4	Apron Screws
6687	1	Adjusting Screw	550308	2	Adjusting Screws
6933	2	Clutch Bodies	550316	1	Lock Screw
8044	2	Escutcheon Pins			

WHEN ORDERING, GIVE PART NUMBER, NAME OF PART, QUANTITY WANTED AND SERIAL NUMBER WHICH IS STAMPED ON HEADSTOCK FRAME

HARDINGE BROTHERS, INC., ELMIRA, N. Y., U. S. A.

PARTS LIST
FOR HARDINGE HLV PRECISION TOOL ROOM LATHE
APRON HALF NUT AND HANDLE ASSEMBLY



Part No.	No. Used	Part Name	Part No.	No. Used	Part Name	Part No.	No. Used	Part Name
37-483	1	Plug	6159	1	Carriage Gib	6682	2	Pins
3253	1	Taper Pin	6160	2	Gib Screws	6695	1	Washer
4831	1	Apron and Cover Assembly	6172	1	Gib	300308	2	Gib Screws
6126	1	Ball Handle	6475	1	Stop Pin	550904	2	Pin Screws
6157	1	Handle Hub	6673	1	Lead Screw Nut			
6158	1	Handle	6678	1	Cam			

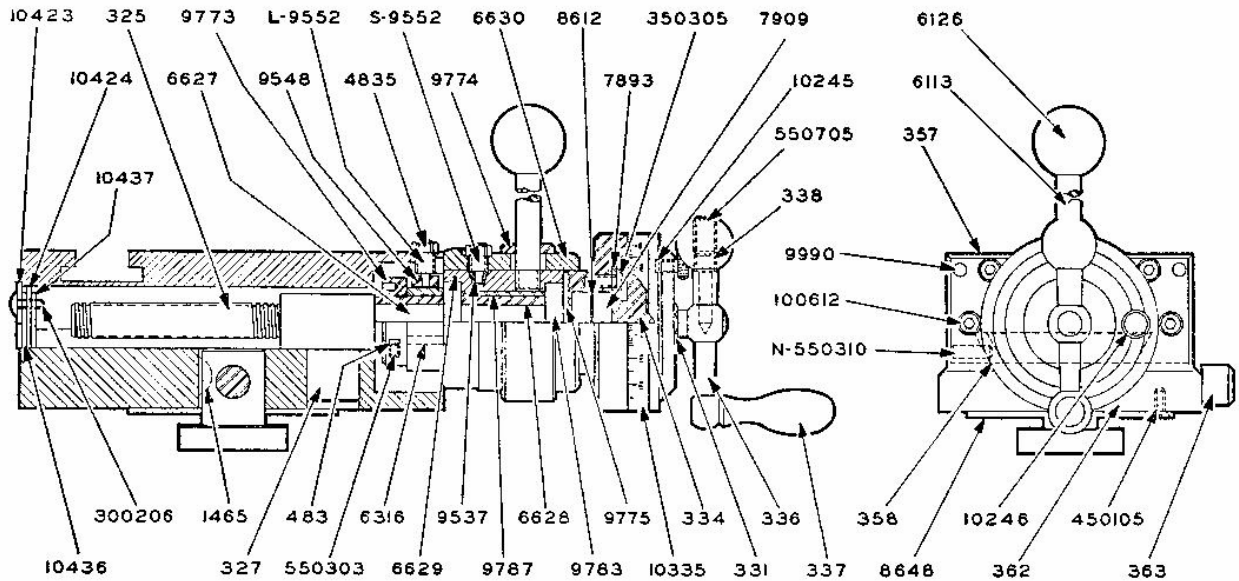
WHEN ORDERING, GIVE PART NUMBER, NAME OF PART, QUANTITY WANTED AND SERIAL NUMBER WHICH IS STAMPED ON HEADSTOCK FRAME

HARDINGE BROTHERS, INC., ELMIRA, N. Y., U. S. A.

PARTS LIST

FOR HARDINGE HLV PRECISION TOOL ROOM LATHE

TOOL POST SLIDE



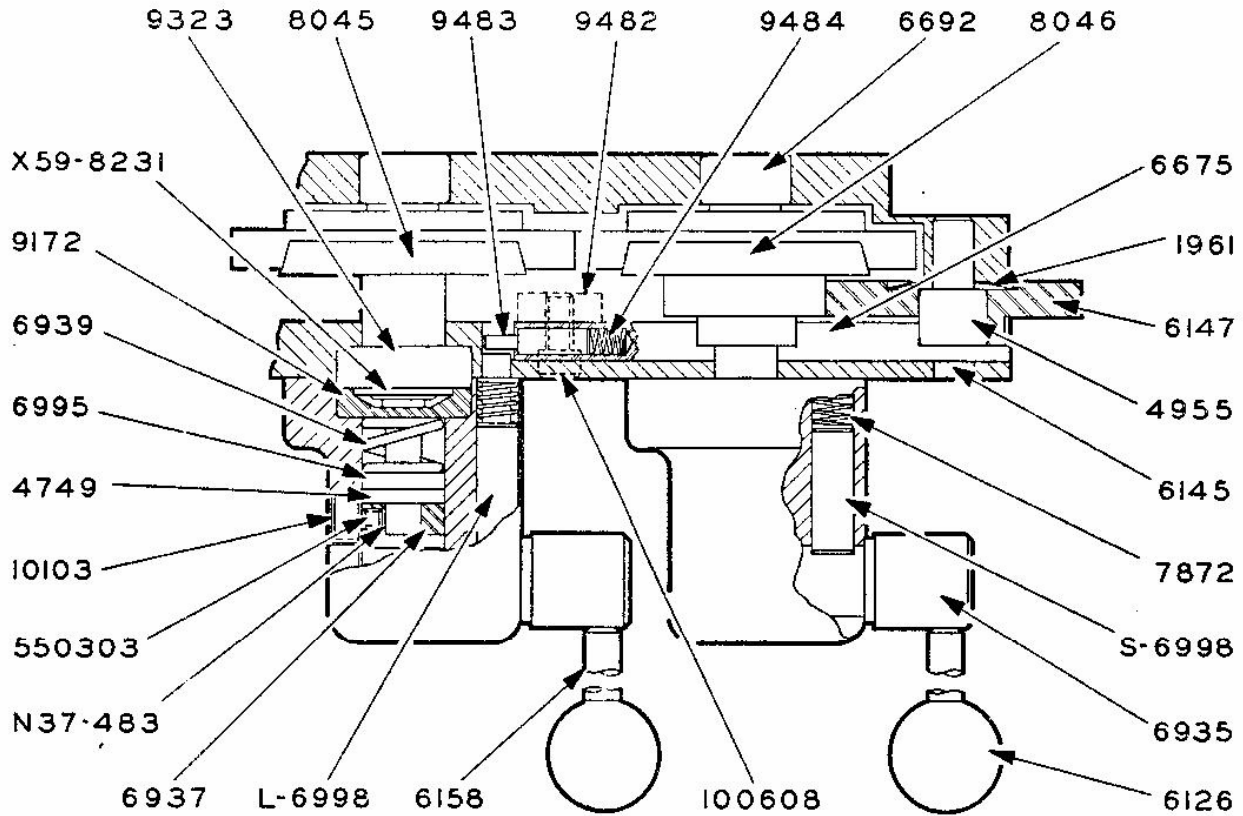
Part No.	No. Used	Part Name	Part No.	No. Used	Part Name	Part No.	No. Used	Part Name
325	1	Feed Screw	6627	1	Bearing Sleeve	9990	2	Dowel Pins
327	1	Feed Nut	6628	1	Bearing	10245	1	Plug
331	1	Nut	6629	1	Barrel	10246	1	Washer and Lock Screw Assembly
334	1	Bushing	6630	1	End Cap	10335	1	Dial and Support Assembly
336	1	Crank	7893	1	Bearing Plate	10423	1	Wiper Mount
337	1	Handle	7909	2	Ball Bearings	10424	1	Index Slide Wiper
338	1	Lock Screw	8612	1	Shim	10436	1	Wiper Plate No. 1
357	1	Tool Post Slide	8648	1	Pilot Ring	10437	1	Wiper Plate No. 2
358	1	Top Slide Gib	9537	1	Key	100612	4	End Cap Screws
362	1	Index Slide	9548	1	Sleeve Key	300206	3	Wiper Screws
363	1	Eccentric Draw Bolt	L-9552	1	Guide Screw	350305	4	Bearing Plate Screws
483	1	Plug	S-9552	1	Barrel Screw	450105	2	Pilot Ring Screws
1465	1	Key	9773	1	Lock Nut	550303	1	Bearing Nut Screw
4835	2	Lock Nuts	9774	1	End Cap Ring	N-550310	4	Gib Screws
6113	1	Handle	9775	1	Sealing Ring	550705	1	Lock Screw
6126	1	Ball Handle	9783	2	Bearings			
6316	1	Key	9787	1	Spacer			

WHEN ORDERING, GIVE PART NUMBER, NAME OF PART, QUANTITY WANTED AND SERIAL NUMBER WHICH IS STAMPED ON HEADSTOCK FRAME

HARDINGE BROTHERS, INC., ELMIRA, N. Y., U. S. A.

PARTS LIST
FOR HARDINGE HLV PRECISION TOOL ROOM LATHE

CLUTCH ASSEMBLY



Part No.	No. Used	Part Name	Part No.	No. Used	Part Name	Part No.	No. Used	Part Name
N37-483	1	Plug	6935	2	Clutch Cams	X-59-8231	2	Retaining Rings
1961	1	Spring Washer	6937	2	Adjusting Nuts	9172	2	Spring Seats
4749	4	Ball Retainers	6939	2	Clutch Springs	9323	2	Bearings
4955	1	Bearing	6995	4	Bearing Races	9482	1	Interlock Plate
6126	2	Ball Handles	S-6998	1	Plunger (Short)	9483	1	Interlock Plunger
6145	1	Stud	L-6998	1	Plunger (Long)	9484	1	Interlock Spring
6147	1	50 Tooth Gear	7872	2	Springs	10103	3	Body Plugs
6158	2	Handles	8045	1	Longitudinal Clutch Assembly	100608	2	Plate Screws
6675	1	Interlock	8046	1	Cross Feed Clutch Assembly	550303	2	Lock Screws
6692	2	Gear Bearings						

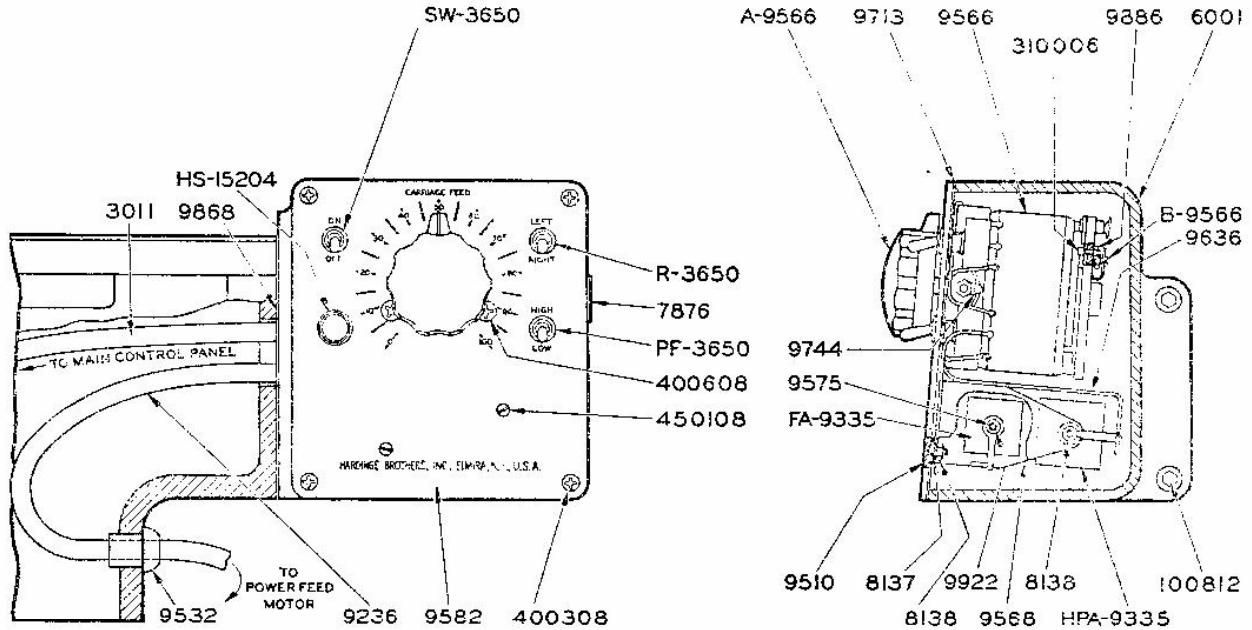
WHEN ORDERING, GIVE PART NUMBER, NAME OF PART, QUANTITY WANTED AND SERIAL NUMBER WHICH IS STAMPED ON HEADSTOCK FRAME

HARDINGE BROTHERS, INC., ELMIRA, N. Y., U. S. A.

PARTS LIST

FOR HARDINGE HLV PRECISION TOOL ROOM LATHE

POWER FEED CONTROL BOX



Part No.	No. Used	Part Name	Part No.	No. Used	Part Name	Part No.	No. Used	Part Name
3011	1	Cord	9510	1	Indicator Plate	9744	5	Solder Lugs
PF-3650	1	High-Low Switch	9532	1	Motor Cord Grommet	9868	1	End Plate Gasket
R-3650	1	Left-Right Switch	9566	1	Variable Transformer	9886	1	Stop Nut
SW-3650	1	On-Off Switch	A-9566	1	Knob	9922	2	Rectifier Spacers
6001	1	End Plate	B-9566	2	Brush Assemblies	HS-15204	1	Pilot Light
7876	1	Hole Plug	9568	1	Rectifier Bracket	100812	3	End Plate Screws
8137	16	Lock Washers	9575	2	Rectifier Studs	310006	1	Stop Screw
8138	10	Rectifier Stud Nuts	9582	1	Complete Control Panel Assembly*	400308	4	Indicator Plate Screws
9236	1	Motor Cord	9636	1	Wire†	400608	3	Transformer Screws
FA-9335	4	Rectifiers	9713	1	Indicator Plate Gasket	450108	2	Bracket Screws
HPA-9335	4	Rectifiers						

* Complete Panel Wired and Assembled For Direct Application to Box.
 † State Length Desired.

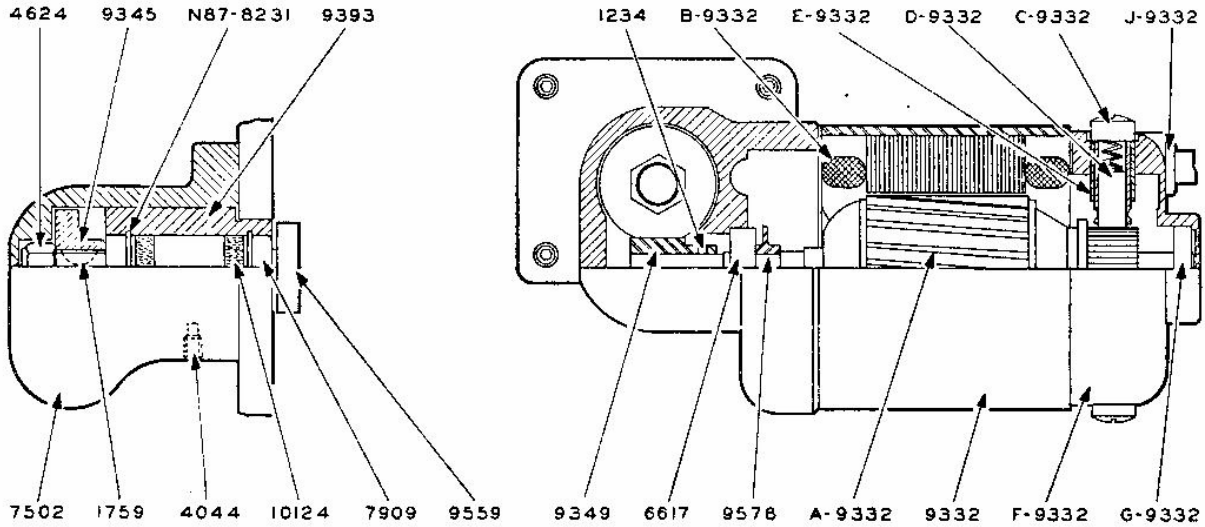
WHEN ORDERING, GIVE PART NUMBER, NAME OF PART, QUANTITY WANTED AND SERIAL NUMBER WHICH IS STAMPED ON HEADSTOCK FRAME

HARDINGE BROTHERS, INC., ELMIRA, N. Y., U. S. A.

PARTS LIST

FOR HARDINGE HLV PRECISION TOOL ROOM LATHE

POWER FEED ASSEMBLY



Part No.	No. Used	Part Name	Part No.	No. Used	Part Name
1234	1	Worm Pin	C-9332	2	Brush Caps*
1759	1	Key	D-9332	2	Brushes With Spring*
4044	1	Lock Screw	E-9332	2	Brush Holders*
4624	1	Shaft Nut	F-9332	1	End Bell*
6617	1	Motor Bearing	G-9332	1	Motor Bearing*
7502	1	Power Feed Housing*	J-9332	1	Grommet*
7909	2	Bearings	9345	1	Worm Wheel
N87-8231	2	Retaining Rings	9349	1	Worm Gear
9332	1	Power Feed Motor*	9393	1	Worm Retaining Plug
A-9332	1	Armature*	9559	1	Housing Shaft
B-9332	1	Field Coil, Pole and Shell Assembly*	9578	1	Spacer
			10124	2	Seals

* When Ordering, Specify Make of Motor.

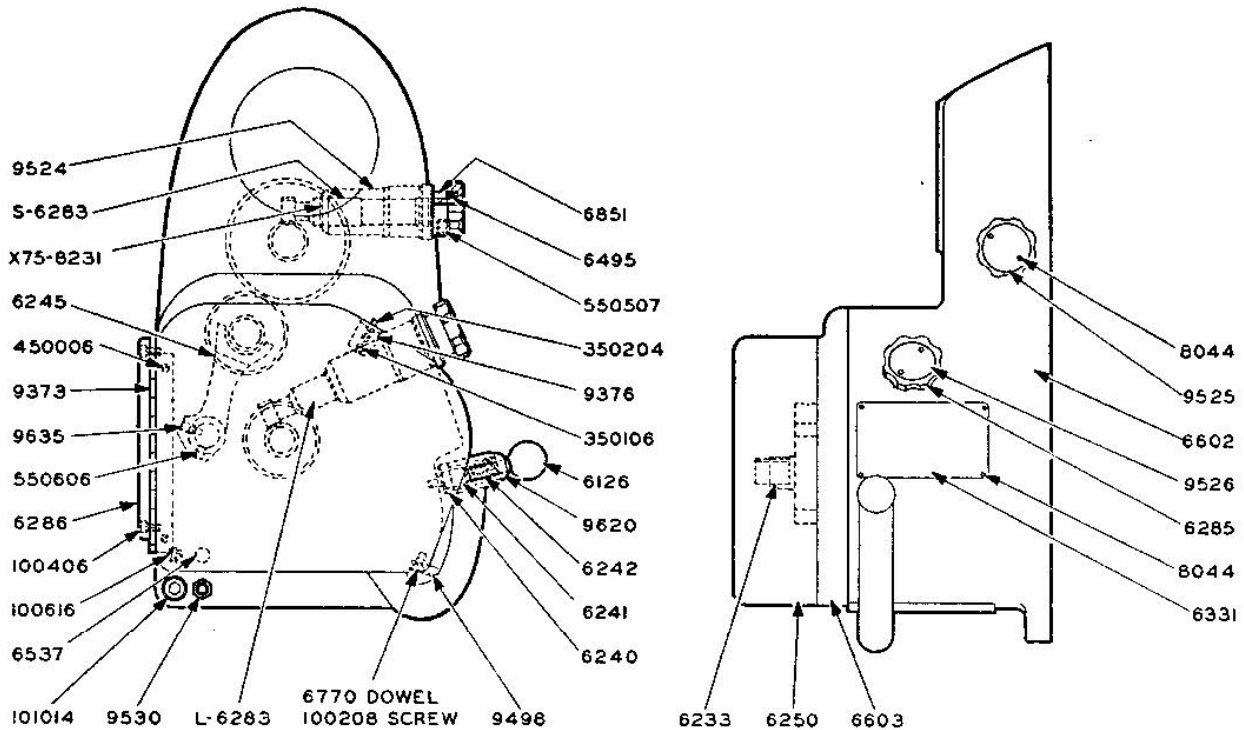
WHEN ORDERING, GIVE PART NUMBER, NAME OF PART, QUANTITY WANTED AND SERIAL NUMBER WHICH IS STAMPED ON HEADSTOCK FRAME

HARDINGE BROTHERS, INC., ELMIRA, N. Y., U. S. A.

PARTS LIST

FOR HARDINGE HLV PRECISION TOOL ROOM LATHE

GEARBOX ASSEMBLY



Part No.	No. Used	Part Name	Part No.	No. Used	Part Name	Part No.	No. Used	Part Name
6126	1	Handle Ball	6537	2	Dowel Pins	9530	1	Dowel Pin
6233	2	Spacers	6602	1	Gearbox Housing	9620	1	Nut
6240	1	Bearing	6603	1	Gearbox Plate	9635	1	Fork Screw
6241	1	Plunger	6770	2	Dowels	100208	2	Guide Screws
6242	1	Spring	6851	2	Plungers	100406	4	Plate Screws
6245	1	Shifter Fork	8044	8	Escutcheon Pins	100616	5	Box Screws
6250	1	Gear Guard	X75-8231	2	Retaining Rings	101014	4	Screws
L-6283	1	Long Pinion Shaft	9373	1	Hinge	350106	2	Catch Screws
S-6283	1	Short Pinion Shaft	9376	1	Catch	350204	1	Catch Strike
6285	2	Pinion Handles	9498	1	Tumbler Guide	450006	6	Hinge Screws
6286	1	Cover Plate	9524	2	Bushings	550507	2	Handle Screws
6331	1	Instruction Plate	9525	1	Thread Feed Plate	550606	1	Fork Screw
6495	2	Springs	9526	1	Three Change Plate			

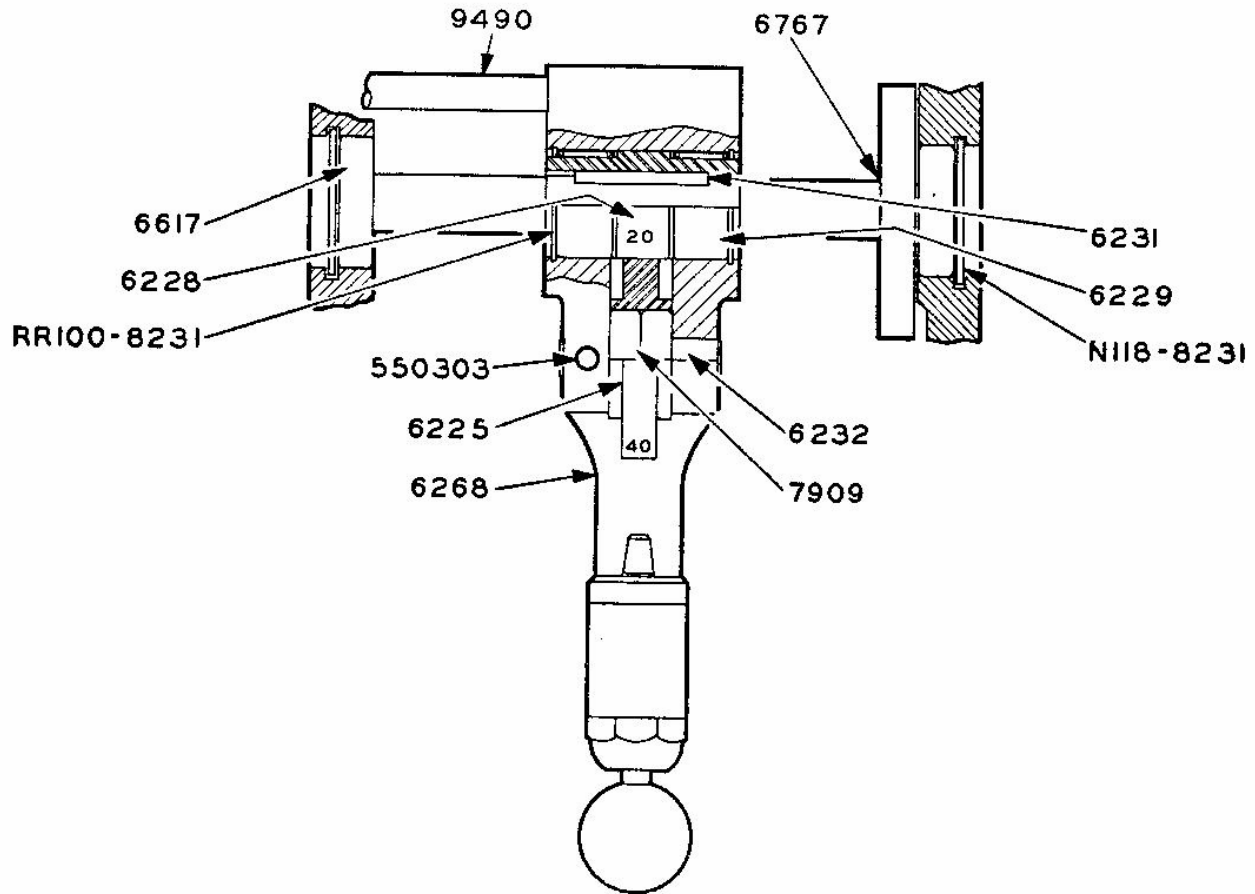
WHEN ORDERING, GIVE PART NUMBER, NAME OF PART, QUANTITY WANTED AND SERIAL NUMBER WHICH IS STAMPED ON HEADSTOCK FRAME

HARDINGE BROTHERS, INC., ELMIRA, N. Y., U. S. A.

PARTS LIST

FOR HARDINGE HLV PRECISION TOOL ROOM LATHE

GEARBOX TUMBLER AND SHAFT ASSEMBLY



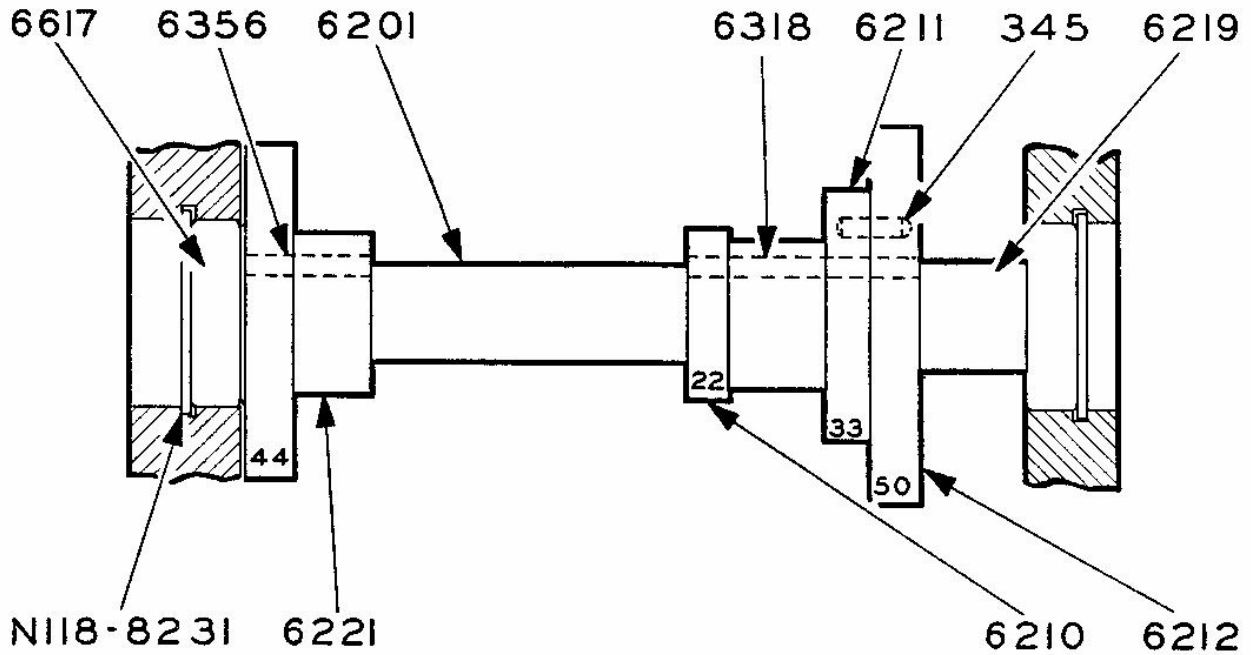
Part No.	No. Used	Part Name	Part No.	No. Used	Part Name
6225	1	40 Tooth Idler Gear	7909	2	Idler Bearings
6228	1	20 Tooth Gear	RR100-		
6229	2	Bearings	8231	2	Retaining Rings
6231	1	Key	N118-		
6232	1	Shaft	8231	2	Retaining Rings
6268	1	Tumbler Body	9490	1	Interlock Shaft
6617	2	Bearings	550303	1	Screw
6767	1	Tumbler Shaft and Gear			

WHEN ORDERING, GIVE PART NUMBER, NAME OF PART, QUANTITY WANTED AND SERIAL NUMBER WHICH IS STAMPED ON HEADSTOCK FRAME

HARDINGE BROTHERS, INC., ELMIRA, N. Y., U. S. A.

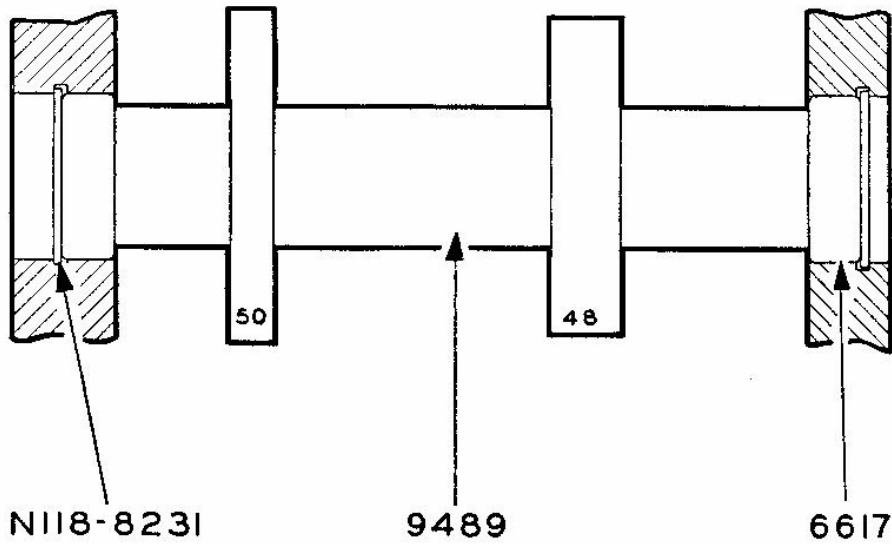
FOR HARDINGE HLV PRECISION TOOL ROOM LATHE

GEARBOX INTERMEDIATE SHAFT ASSEMBLY



Part No.	No. Used	Part Name	Part No.	No. Used	Part Name	Part No.	No. Used	Part Name
345	2	Dowel Pins	6212	1	50 Tooth Gear	6356	1	Gear Key
6201	1	Shaft	6219	1	Bushing	6617	2	Ball Bearings
6210	1	22 Tooth Gear	6221	1	44 Tooth Gear	N118-8231	2	Retaining Rings
6211	1	33 Tooth Gear	6318	1	Shaft Key			

GEARBOX REVERSE SHAFT ASSEMBLY



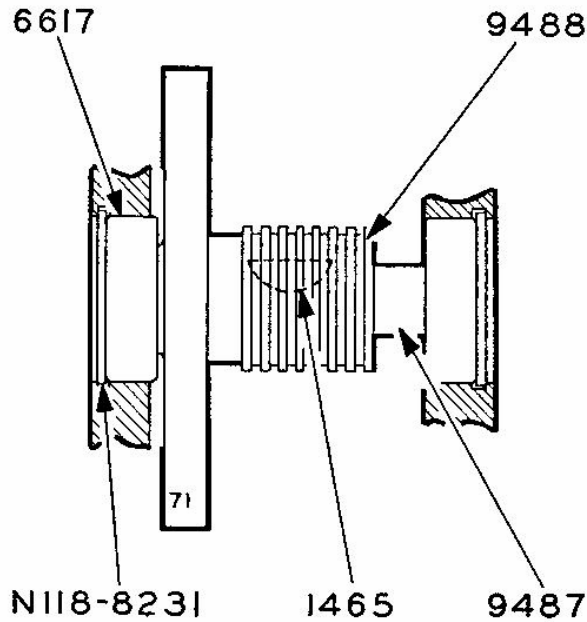
Part No.	No. Used	Part Name
6617	4	Ball Bearings
N118-8231	2	Retaining Rings
9489	1	Reverse Shaft and Gears

WHEN ORDERING, GIVE PART NUMBER, NAME OF PART, QUANTITY WANTED AND SERIAL NUMBER WHICH IS STAMPED ON HEADSTOCK FRAME

HARDINGE BROTHERS, INC., ELMIRA, N. Y., U. S. A.

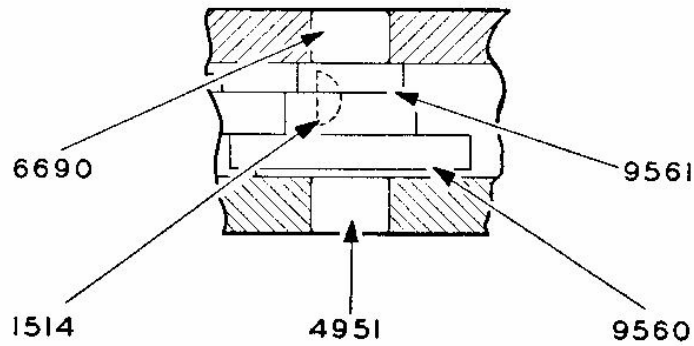
**PARTS LIST
FOR HARDINGE HLV PRECISION TOOL ROOM LATHE**

GEARBOX IDLER SHAFT ASSEMBLY



Part No.	No. Used	Part Name	Part No.	No. Used	Part Name
1465	1	Key	9487	1	Idler Shaft
6617	4	Ball Bearings	9488	1	71 Tooth Gear
N118-8231	2	Retaining Rings			

IDLER SHAFT



IDLER SHAFT

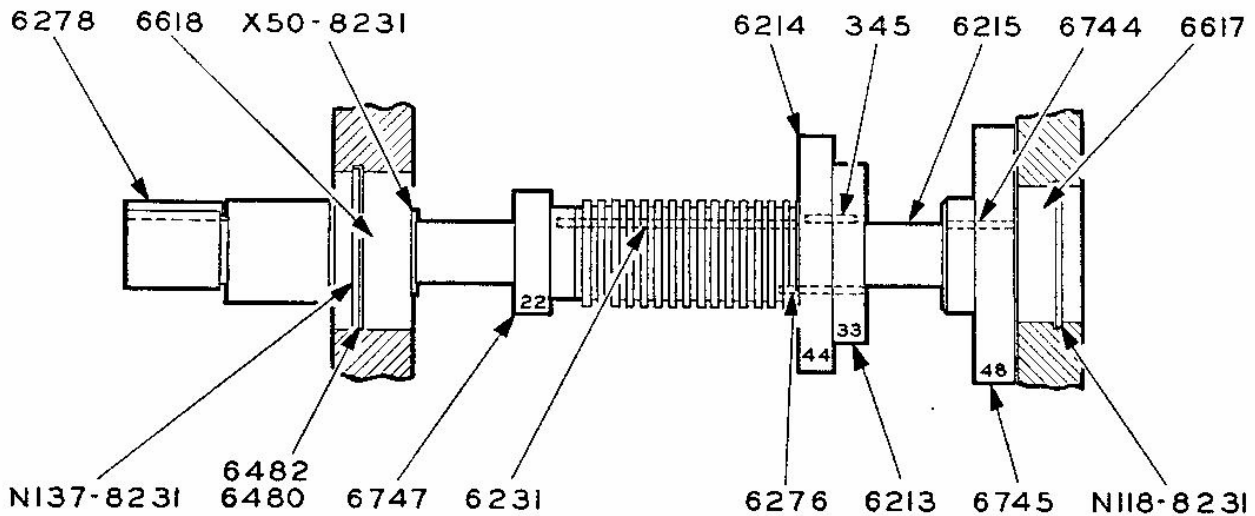
Part No.	No. Used	Part Name	Part No.	No. Used	Part Name
1514	1	Key	9560	1	Idler Shaft
4951	1	Bearing	9561	1	24 Tooth Gear
6690	1	Bearing			

WHEN ORDERING, GIVE PART NUMBER, NAME OF PART, QUANTITY WANTED AND SERIAL NUMBER WHICH IS STAMPED ON HEADSTOCK FRAME

HARDINGE BROTHERS, INC., ELMIRA, N. Y., U. S. A.

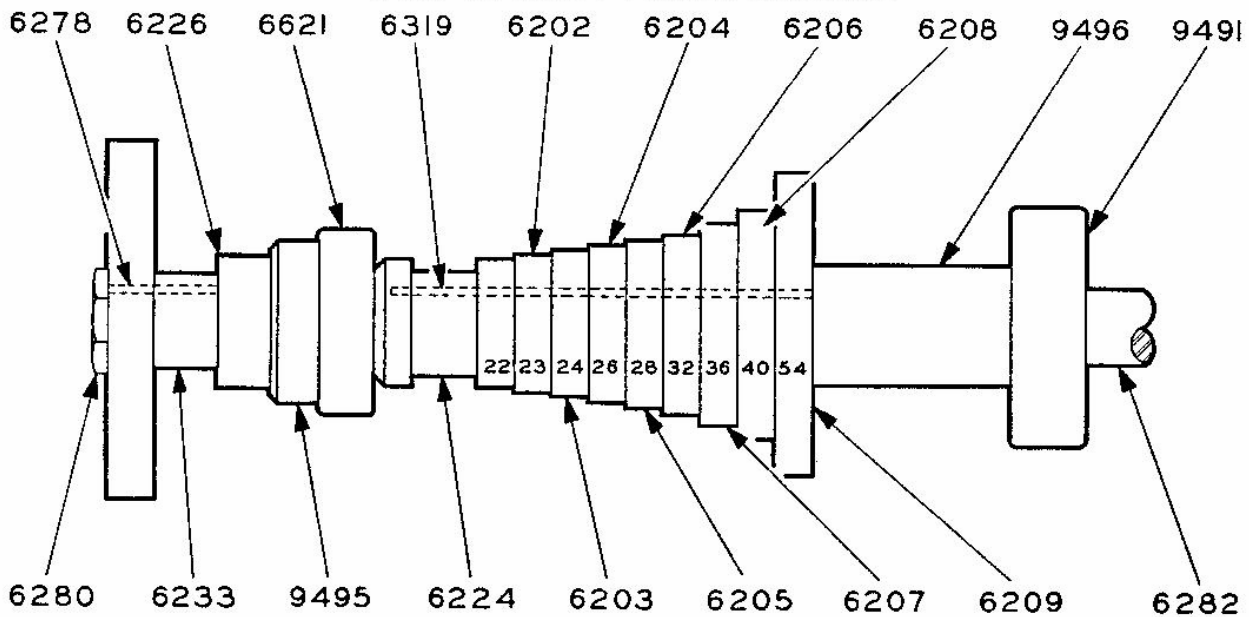
FOR HARDINGE HLV PRECISION TOOL ROOM LATHE

GEARBOX CHANGE SHAFT ASSEMBLY



Part No.	No. Used	Part Name	Part No.	No. Used	Part Name	Part No.	No. Used	Part Name
345	2	Dowel Pins	6480		.001 Shim	X50-8231	1	Retaining Ring
6213	1	33 Tooth Gear	6482		.005 Shim	N118-8231	1	Retaining Ring
6214	1	44 Tooth Gear	6617	1	Ball Bearing	N137-8231	1	Retaining Ring
6215	1	Shaft	6618	1	Ball Bearing	8231	1	Retaining Ring
6231	1	Key	6744	1	Key			
6276	1	Gear Key	6745	1	48 Tooth Gear			
6278	1	Gear Key	6747	1	22 Tooth Gear			

GEARBOX CLUSTER SHAFT ASSEMBLY



Part No.	No. Used	Part Name	Part No.	No. Used	Part Name	Part No.	No. Used	Part Name
6202	1	23 Tooth Gear	6209	1	54 Tooth Gear	6319	1	Key
6203	1	24 Tooth Gear	6224	1	22 Tooth Gear	6621	1	Bearing
6204	1	26 Tooth Gear	6226	1	Collar	9491	1	Bearing
6205	1	28 Tooth Gear	6233	1	Spacer	9495	1	Lock Nut
6206	1	32 Tooth Gear	6278	1	Key	9496	1	Spacer
6207	1	36 Tooth Gear	6280	1	Gear Screw			
6208	1	40 Tooth Gear	6282	1	Cluster Shaft			

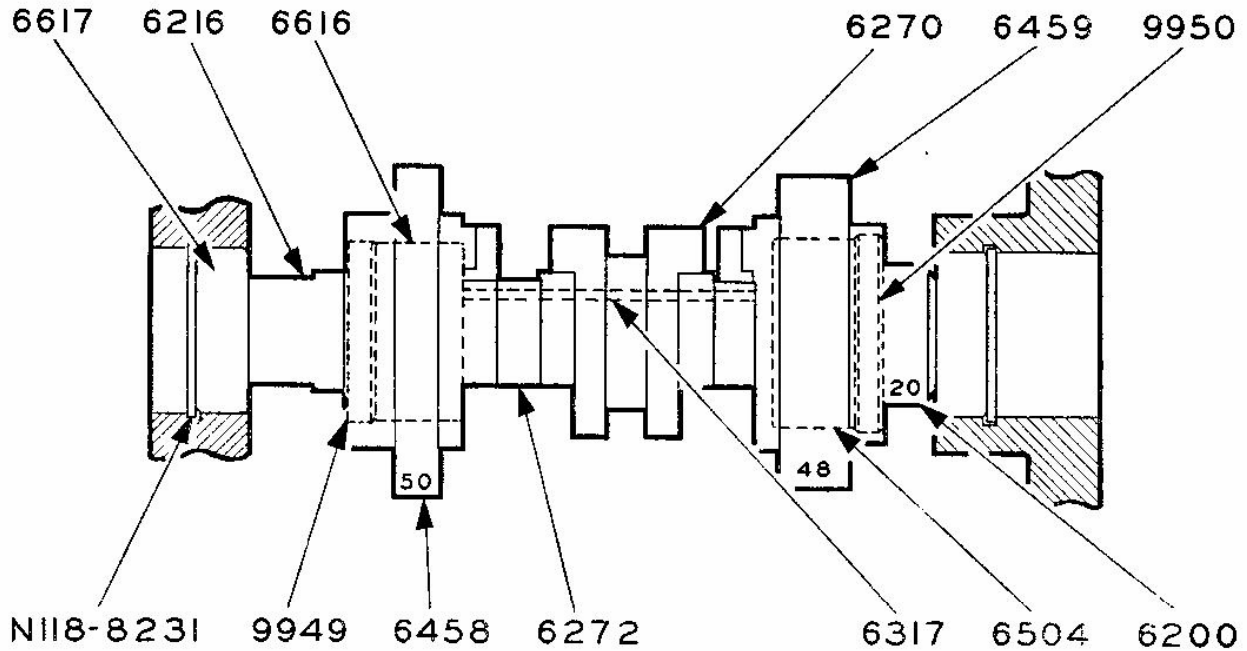
WHEN ORDERING, GIVE PART NUMBER, NAME OF PART, QUANTITY WANTED AND SERIAL NUMBER WHICH IS STAMPED ON HEADSTOCK FRAME

HARDINGE BROTHERS, INC., ELMIRA, N. Y., U. S. A.

PARTS LIST

FOR HARDINGE HLV PRECISION TOOL ROOM LATHE

GEARBOX CLUTCH SHAFT ASSEMBLY

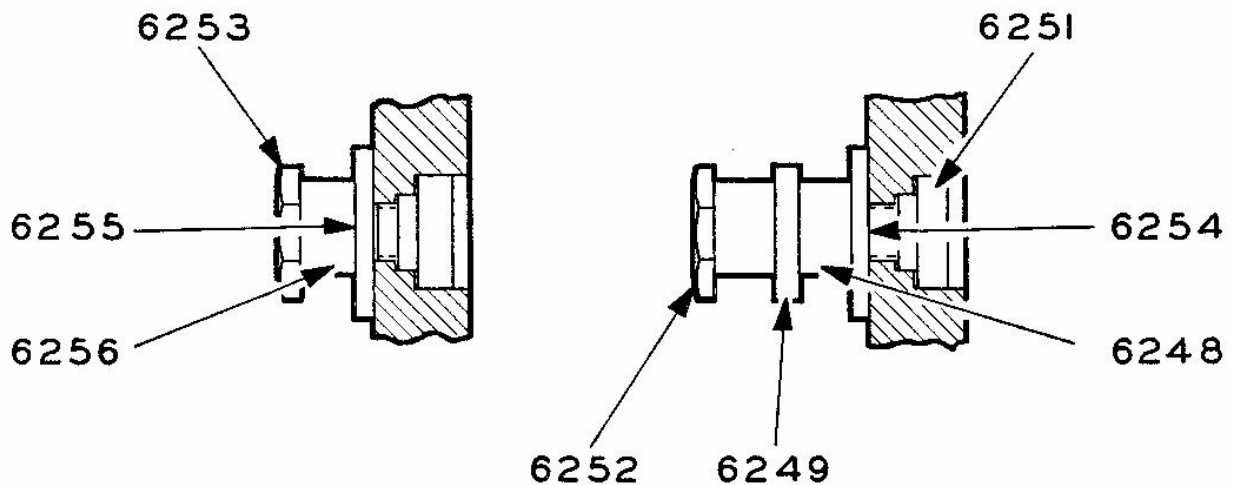
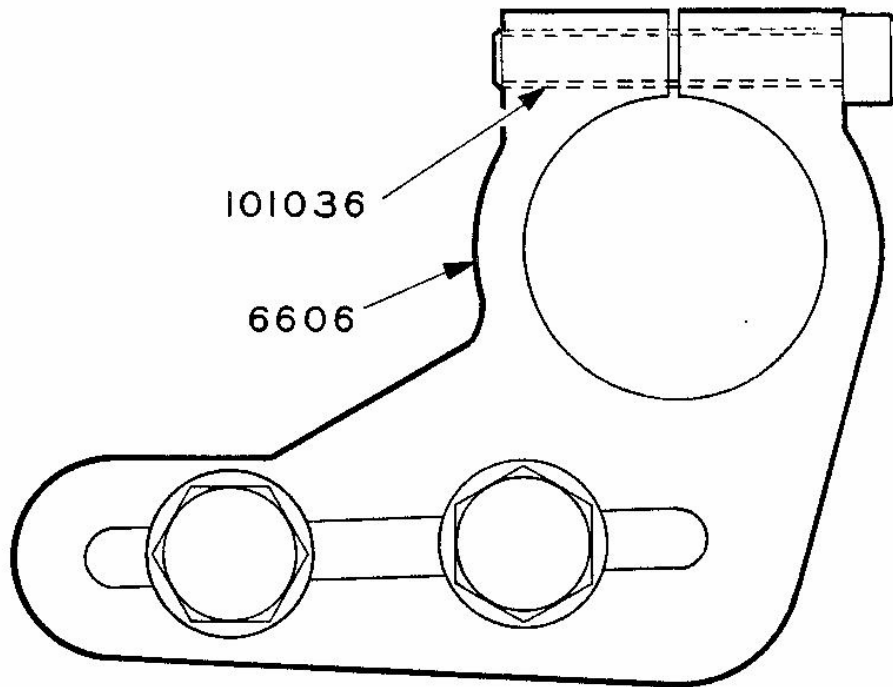


Part No.	No. Used	Part Name	Part No.	No. Used	Part Name
6200	1	Shaft	6504	1	Ball Bearing
6216	1	Shaft Bushing	6616	1	Ball Bearing
6270	1	Quick Reverse Clutch	6617	2	Ball Bearings
6272	1	Clutch Bushing	N-118-		
6317	1	Key	8231	2	Retaining Rings
6458	1	Reverse Gear Assembly	9949	1	Reverse Nut
6459	1	Forward Gear Assembly	9950	1	Forward Nut

WHEN ORDERING, GIVE PART NUMBER, NAME OF PART, QUANTITY WANTED AND SERIAL NUMBER WHICH IS STAMPED ON HEADSTOCK FRAME

HARDINGE BROTHERS, INC., ELMIRA, N. Y., U. S. A.

PARTS LIST
FOR HARDINGE HLV PRECISION TOOL ROOM LATHE
CHANGE GEAR BRACKET



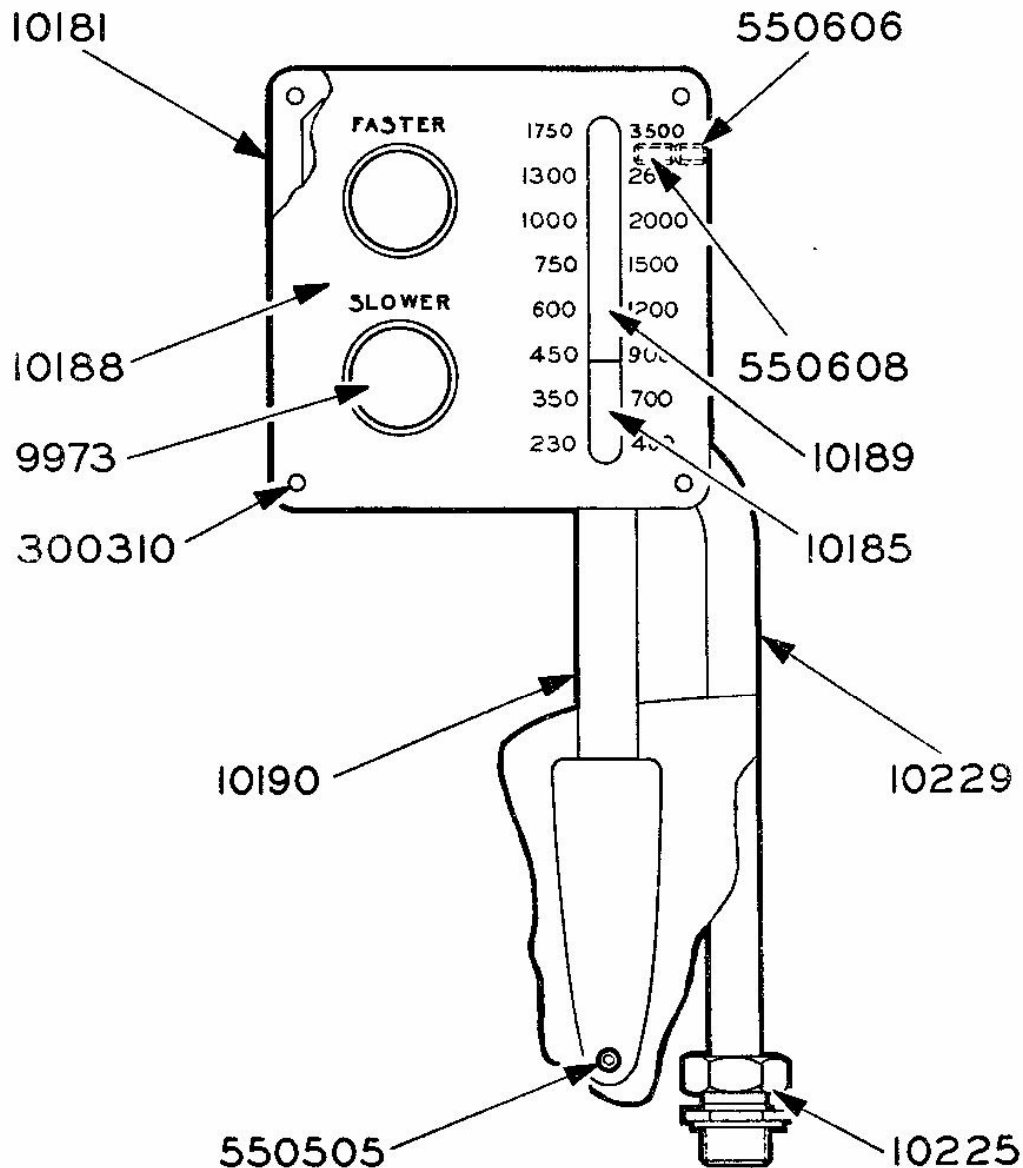
Part No.	No. Used	Part Name
6248	1	Bushing
6249	1	Spacer
6251	2	Clamping Nuts
6252	1	Clamping Bolt
6253	1	Single Gear Clamping Bolt

Part No.	No. Used	Part Name
6254	1	Bushing (Double)
6255	1	Bushing (Single)
6256	1	Gear Bushing
6606	1	Bracket
101036	1	Screw

WHEN ORDERING, GIVE PART NUMBER, NAME OF PART, QUANTITY WANTED AND SERIAL NUMBER WHICH IS STAMPED ON HEADSTOCK FRAME

HARDINGE BROTHERS, INC., ELMIRA, N. Y., U. S. A.

PARTS LIST
FOR HARDINGE HLV PRECISION TOOL ROOM LATHE
VARIABLE SPEED CONTROL BOX



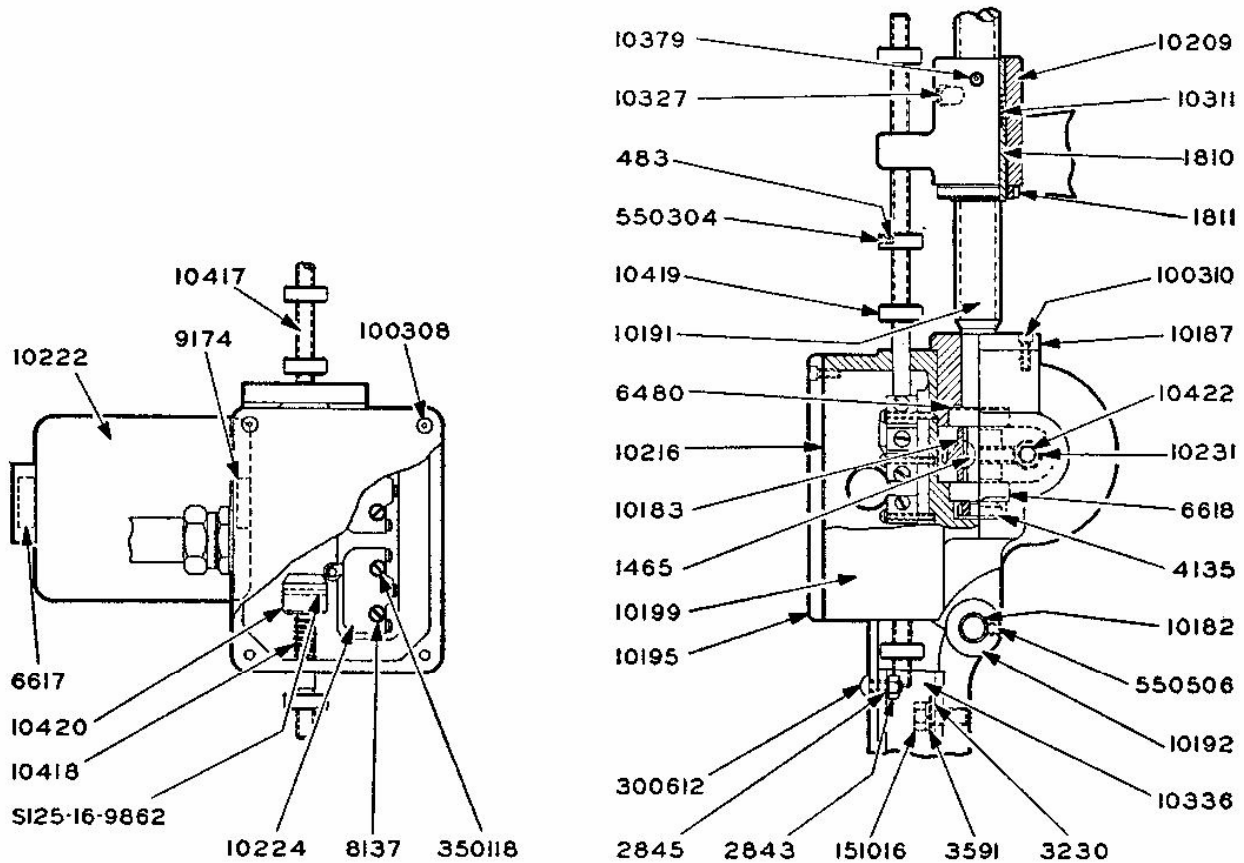
Part No.	No. Used	Part Name	Part No.	No. Used	Part Name
9973	2	Control Units	10225	2	Connectors
10181	1	Control Box	10229	1½ Ft.	Conduit
10185	1	Indicator Rod Tip	300310	4	Plate Screws
10188	1	Indicator Plate	550505	2	Support Screws
10189	1	Indicator Window	550606	2	Lock Screws
10190	1	Support	550608	2	Screws

WHEN ORDERING, GIVE PART NUMBER, NAME OF PART, QUANTITY WANTED AND SERIAL NUMBER WHICH IS STAMPED ON HEADSTOCK FRAME

HARDINGE BROTHERS, INC., ELMIRA, N. Y., U. S. A.

PARTS LIST

**FOR HARDINGE HLV PRECISION TOOL ROOM LATHE
VARIABLE SPEED ACTUATOR ASSEMBLY — REVISION 1**



Part No.	No. Used	Part Name	Part No.	No. Used	Part Name	Part No.	No. Used	Part Name
483	4	Plugs	S125-16-			10327	1	Grease Fitting
1465	1	Key	9862	2	Roll Pins	10336	1	Limit Switch Plate
1810	1	Vertical Screw Nut	10182	1	Swivel Pin	10379	1	Key
1811	1	Vertical Screw Lock Nut	10183	1	Worm Wheel	10417	1	Trip Rod
2843	2	Nuts	10187	1	Bearing Cap	10418	1	Trip Rod Spring
2845	2	Washers	10191	1	Vertical Screw	10419	4	Trip Rod Stops
3230	1	Washer	10192	1	Drive Support	10420	2	Switch Trips
3591	1	Lock Washer	10195	1	Control Housing Cover	10422	1	Motor Shaft Nut
4135	1	Bearing Lock Nut	10199	1	Control Housing	100308	4	Housing Cover Screws
6480	1	Bearing Shim	10209	1	Feed Screw Nut Housing	100310	3	Bearing Cap Screws
6617	1	Motor Bearing	10216	1	Housing Gasket	151016	1	Screw
6618	2	Screw Bearings	10222	1	Motor*	300612	2	Screws
8137	4	Lock Washers	10224	2	Micro Switches	350118	4	Micro Switch Screws
9174	1	Motor Shaft Bearing	10231	1	Motor Worm	550304	4	Lock Screws
			10311	1	Spring	550506	1	Swivel Pin Screw

* When Ordering, Specify Make of Motor.

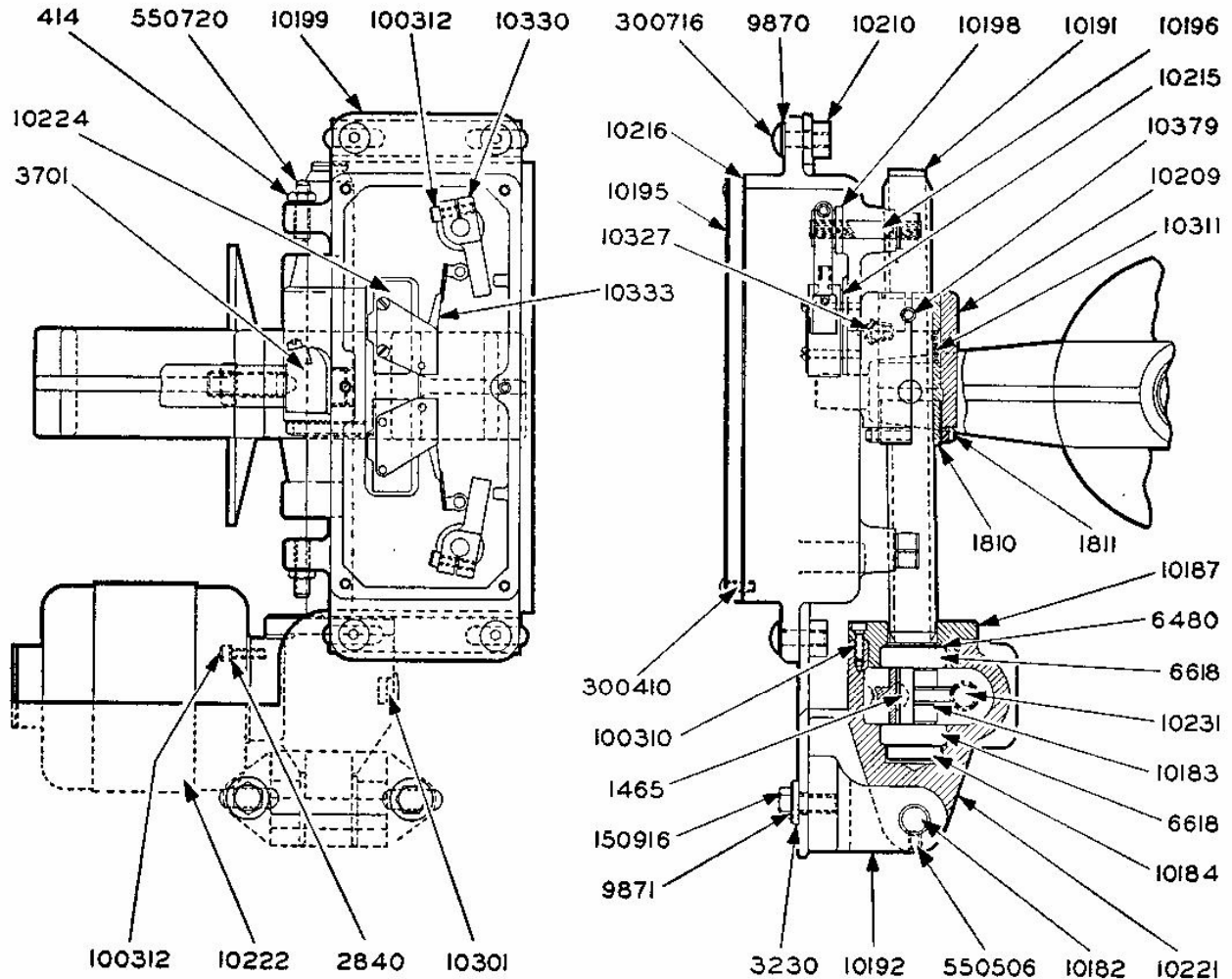
WHEN ORDERING, GIVE PART NUMBER, NAME OF PART, QUANTITY WANTED AND SERIAL NUMBER WHICH IS STAMPED ON HEADSTOCK FRAME

HARDINGE BROTHERS, INC., ELMIRA, N. Y., U. S. A.

PARTS LIST

FOR HARDINGE HLV PRECISION TOOL ROOM LATHE

VARIABLE SPEED ACTUATOR ASSEMBLY



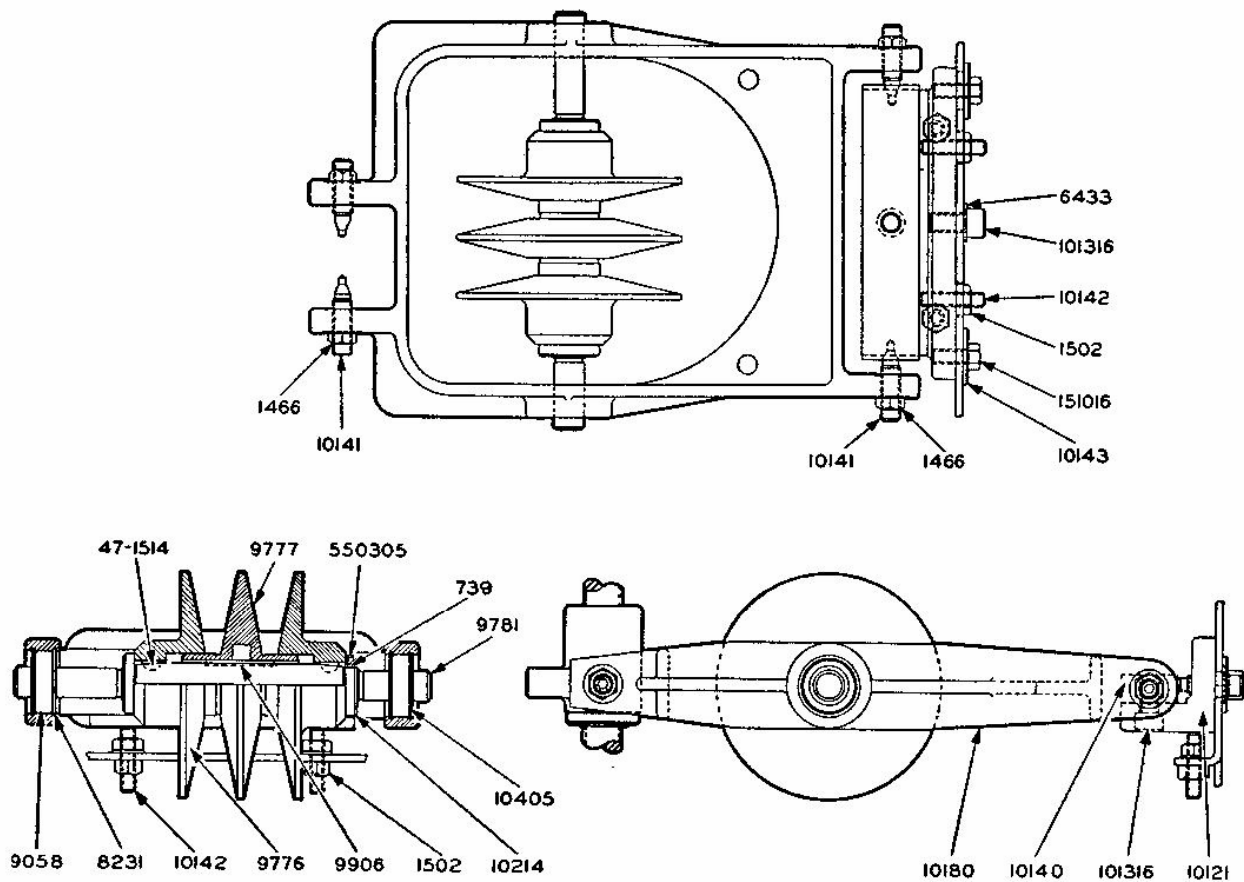
Part No.	No. Used	Part Name	Part No.	No. Used	Part Name	Part No.	No. Used	Part Name
414	2	Stop Screw Lock Nuts	10187	1	Bearing Cap	10301	1	Plug
1465	1	Key	10191	1	Vertical Screw	10311	1	Spring
1810	1	Vertical Screw Nut	10192	1	Mounting Plate Support	10327	1	Grease Fitting
1811	1	Vertical Screw	10195	1	Switch Housing Cover	10330	4	Trip Levers
		Lock Nut	10196	2	Trip Lever Shafts	10333	2	Actuators
2840	4	Lock Washers	10198	2	Spacers	10379	1	Key
3230	2	Washers	10199	1	Switch Housing	100310	3	Bearing Cap Screws
3701	1	Connector	10209	1	Nut Housing	100312	8	Screws
6480		Bearing Shims	10210	2	Clamping Plates	150916	2	Support Screws
6618	2	Bearings	10215	2	Insulators	300410	6	Cover Screws
9870	4	Washers	10216	1	Gasket	300716	4	Plate Screws
9871	2	Washers	10221	1	Reducing Gear Housing	550506	1	Swivel Pin Screw
10182	1	Swivel Pin	10222	1	Motor	550720	2	Stop Screws
10183	1	Worm Wheel	10224	2	Limit Switches			
10184	1	Vertical Screw Nut	10231	1	Motor Worm			

WHEN ORDERING, GIVE PART NUMBER, NAME OF PART, QUANTITY WANTED AND SERIAL NUMBER WHICH IS STAMPED ON HEADSTOCK FRAME

HARDINGE BROTHERS, INC., ELMIRA, N. Y., U. S. A.

PARTS LIST
FOR HARDINGE HLV PRECISION TOOL ROOM LATHE

VARIABLE SPEED PULLEY ASSEMBLY



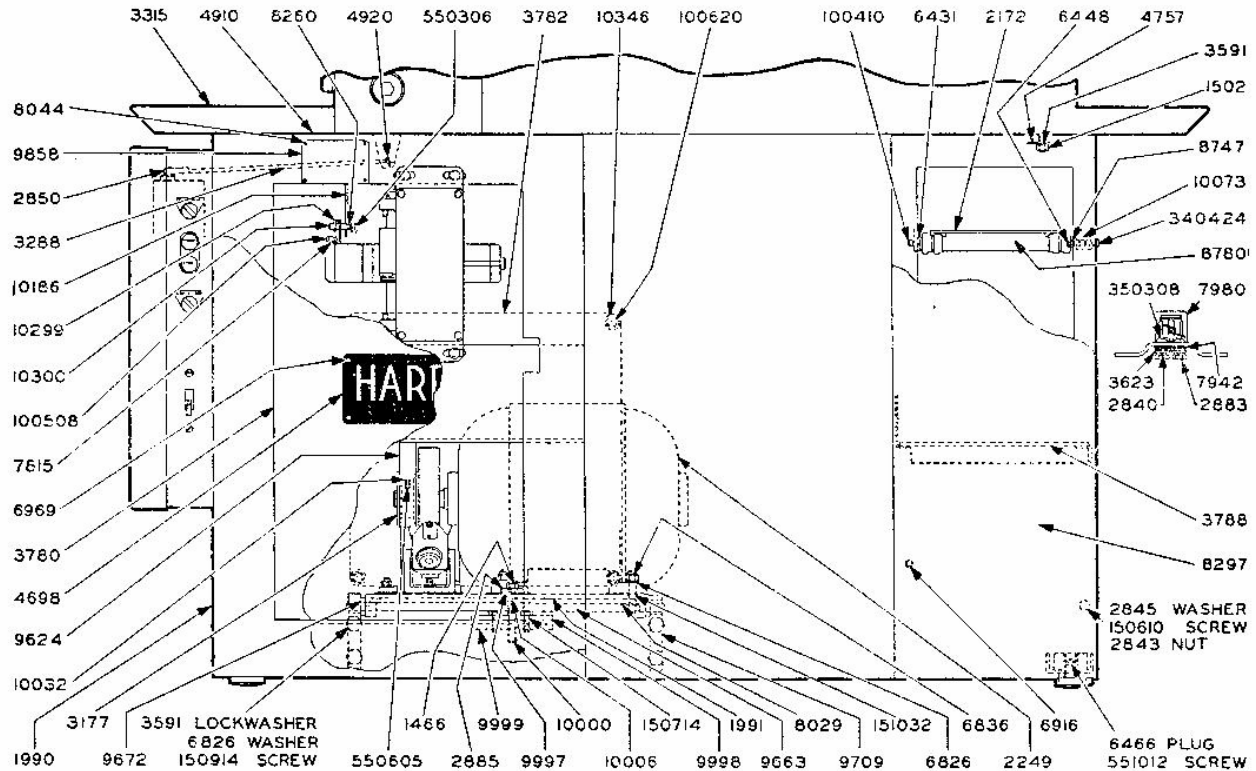
Part No.	No. Used	Part Name	Part No.	No. Used	Part Name	Part No.	No. Used	Part Name
739	2	Nylon Plugs	9777	1	Inner Pulley	10180	1	Drive Support
1466	4	Pivot Screw Nuts	9781	1	Tie Shaft	10214	2	Pulley Nuts
1502	4	Nuts	9906	1	Key	10405		Bearing Shims
47-1514	2	Keys	10121	1	Support Bracket	101316	2	Bolts
6433	1	Washer	10140	1	Pivot Block	151016	2	Lock Screws
8231	4	Retaining Rings	10141	4	Pivot Screws	550305	2	Screws
9058	2	Bearings	10142	4	Adjusting Screws			
9776	2	Outer Pulleys	10143	2	Washers			

WHEN ORDERING, GIVE PART NUMBER, NAME OF PART, QUANTITY WANTED AND SERIAL NUMBER WHICH IS STAMPED ON HEADSTOCK FRAME

HARDINGE BROTHERS, INC., ELMIRA, N. Y., U. S. A.

PARTS LIST FOR HARDINGE HLV PRECISION TOOL ROOM LATHE

PEDESTAL BASE



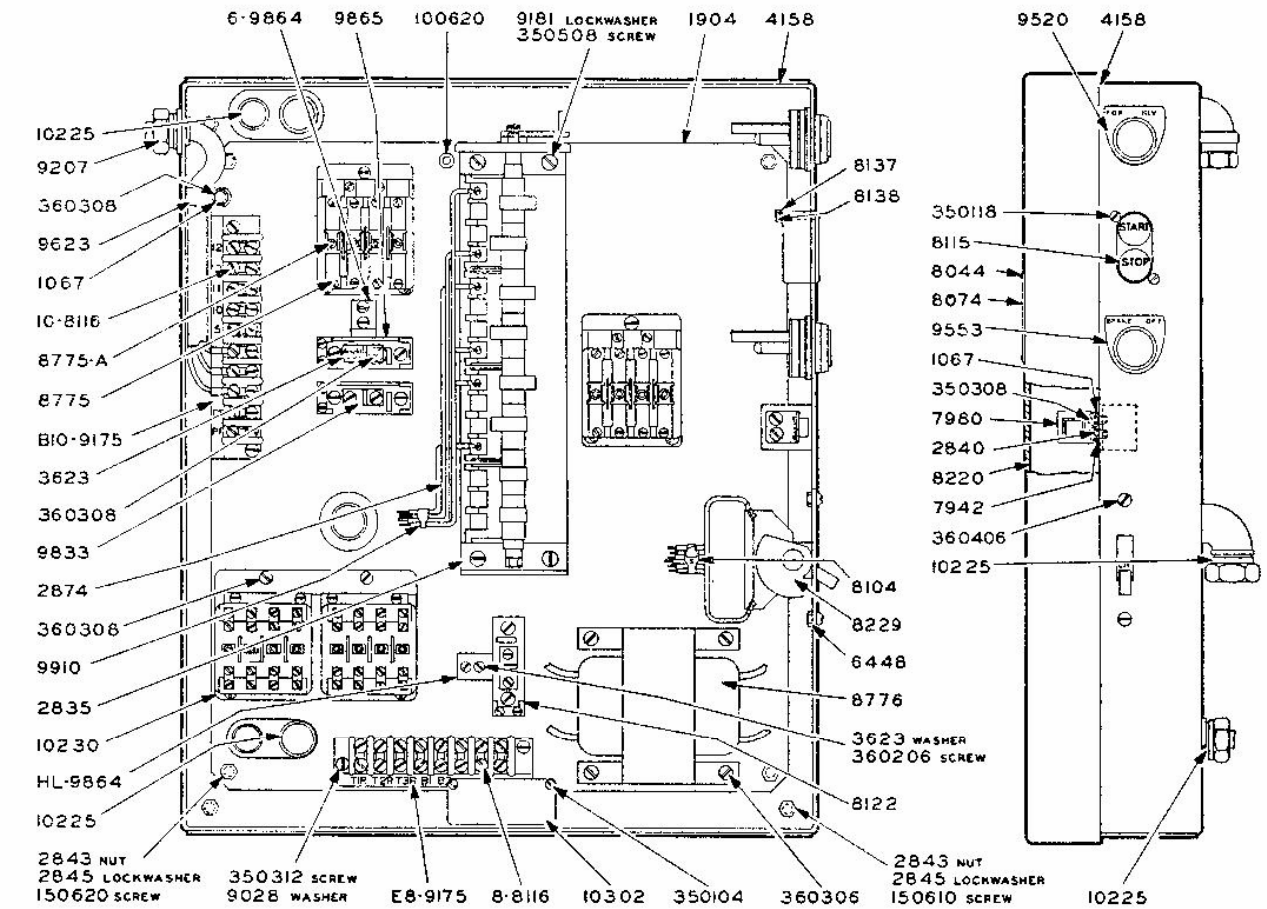
Part No.	No. Used	Part Name	Part No.	No. Used	Part Name	Part No.	No. Used	Part Name
1466	1	Motor Plate Nut	4920	1	Cotter Pin	9998	1	Upper Support Plate
1502	6	Oil Pan Nuts	6431	4	Washers	9999	1	Lower Support Plate
1990	1	Base	6448	2	Nuts	10000	1	Support Screw
1991	1	Motor Plate	6466	1	Plug	10006	1	Insulator Bushing
2172	1	Collet Board Only	6826	8	Washers	10032	1	Lock Screw
2249	1	Motor	6836	4	Motor Bolt Nuts	10073	2	Spacers
2840	4	Lockwashers	6916	4	Rubber Plugs	10186	1	Indicator Rod
2843	14	Nuts	6969	6	Plate Screws	10299	1	Rod Support
2845	14	Lockwashers	7815	1	Washer	10300	1	Pivot Screw
2850	1	Pull Rod Link	7942	2	Shims	10346	4	Rear Cover Spacers
2883	4	Catch Nuts	7980	2	Catches	100410	2	Carrier Screws
2885	2	Washers	8029	4	Lockwashers	100508	1	Support Screw
3177	1	Motor Pulley	8044	4	Escutcheon Pins	100620	4	Cover Screws
3288	1	Pull Rod	8260	1	Brass Plug	150610	10	Door Screws
3315	1	Oil Pan	8297	1	Collet Door	150714	2	Clamp Screws
3591	10	Lockwashers	8747	4	Nuts	150914	4	Screws
3623	4	Catch Washers	8780	1	Collet Board Assembly	151032	4	Motor Bolts
3780	1	Motor Door	9624	1	Motor Belt	340424	2	Carrier Screws
3782	1	Rear Cover	9663	1	Motor Plate Shaft	350308	4	Catch Screws
3788	2	Tool Shelves	9672	2	Rubber Bushings	550306	1	Set Screw
4698	1	Name Plate	9709	2	Support Blocks	550605	1	Pulley Screw
4757	6	Washers	9858	1	Brake Plate	551012	1	Foot Screw
4910	3	Cork Pads	9997	2	Bushings			

WHEN ORDERING, GIVE PART NUMBER, NAME OF PART, QUANTITY WANTED AND SERIAL NUMBER WHICH IS STAMPED ON HEADSTOCK FRAME

HARDINGE BROTHERS, INC., ELMIRA, N. Y., U. S. A.

PARTS LIST FOR HARDINGE HLV PRECISION TOOL ROOM LATHE

ELECTRIC CONTROL PANEL



Part No.	No. Used	Part Name	Part No.	No. Used	Part Name	Part No.	No. Used	Part Name
1067	3	Catch Washers	8137	4	Lock Washers	9910	6	Wire Bands
1904	1	Panel Plate	8138	2	Nuts	10225	3	3/8" Connectors 90°
2835	1	Cam Speed Switch	8220	1	Wiring Diagram	10225	1	3/8" Connector Straight
2840	2	Lock Washers	8229	1	Pump Switch	10225	1	3/8" Connector 90°
2843	9	Nuts	8775	2	Contactors	10225	5	3/8" Connectors Straight
2845	9	Lock Washers	8775-A	1	Complete Set of Stationary and Movable Contacts	10230	1	Contactors
2874	1	Wire (When Ordering Specify Red or Black)	8776	1	Transformer	10302	1	Instruction Plate
3623	6	Washers	9028	4	Washers	100620	1	Screw
4158	1	Switch Case	E8-9175	1	Marker Strip	150610	4	Case To Pedestal Screws
6448	2	Pump Switch Nuts	B10-9175	1	Marker Strip	150620	4	Plate To Pedestal Screws
7942	3	Shims For Catch	9181	8	Lock Washers	350104	2	Instruction Plate Screws
7980	1	Catch	9207	1	Connector	350118	2	Push Button Screws
8044	4	Escutcheon Pins	9520	1	Forward-Reverse Name Plate	350308	2	Catch Screws
8074	1	Data Plate	9553	2	Switches	350312	4	Terminal Board Screws
8104	6	Wire Markers	9623	1	Clamp	350508	4	Drum Switch Screws
8115	1	Push Button	9833	4	Heaters	360206	4	Relay Screws
8-8116	1	Terminal Strip	HL-9864	1	Relay Support	360306	4	Transformer Screws
10-8116	1	Terminal Strip	6-9864	1	Relay Support	360308	14	Screws
8122	3	Relays	9865	2	Relay Insulators	360406	2	Pump Switch Screws

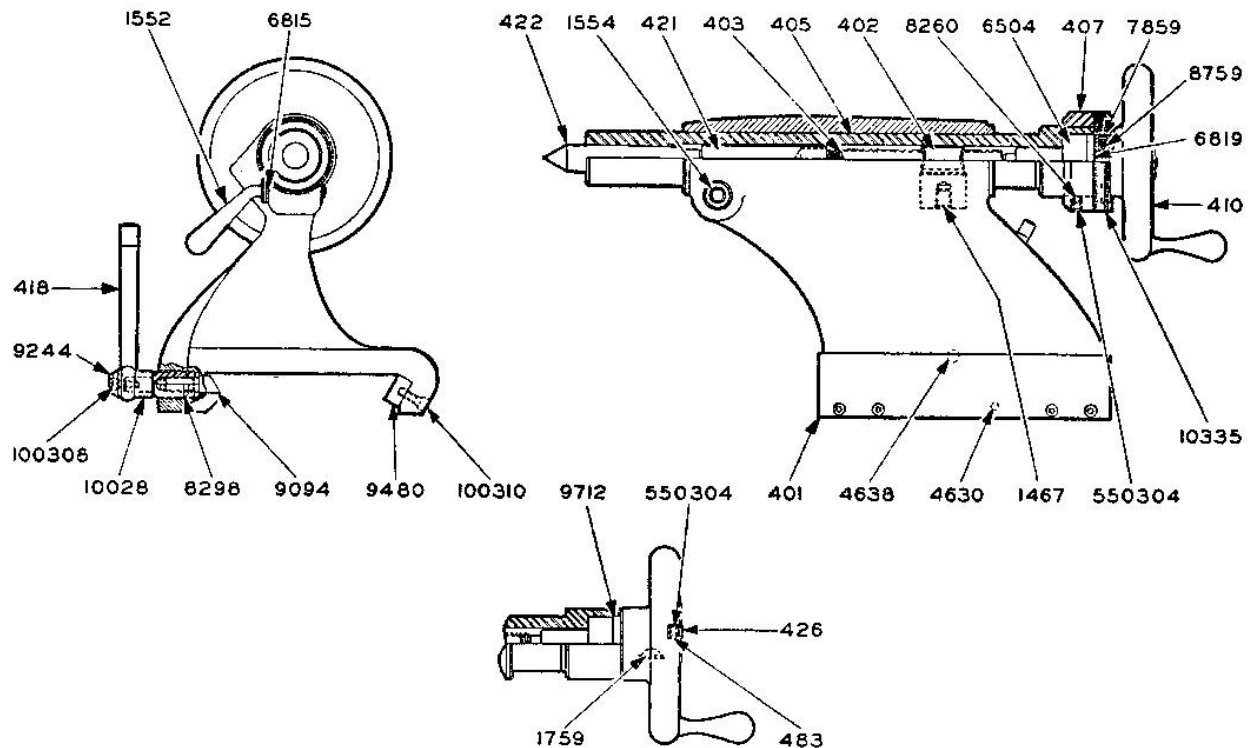
WHEN ORDERING, GIVE PART NUMBER, NAME OF PART, QUANTITY WANTED AND SERIAL NUMBER WHICH IS STAMPED ON HEADSTOCK FRAME

HARDINGE BROTHERS, INC., ELMIRA, N. Y., U. S. A.

PARTS LIST

FOR HARDINGE HLV PRECISION TOOL ROOM LATHE

TAILSTOCK



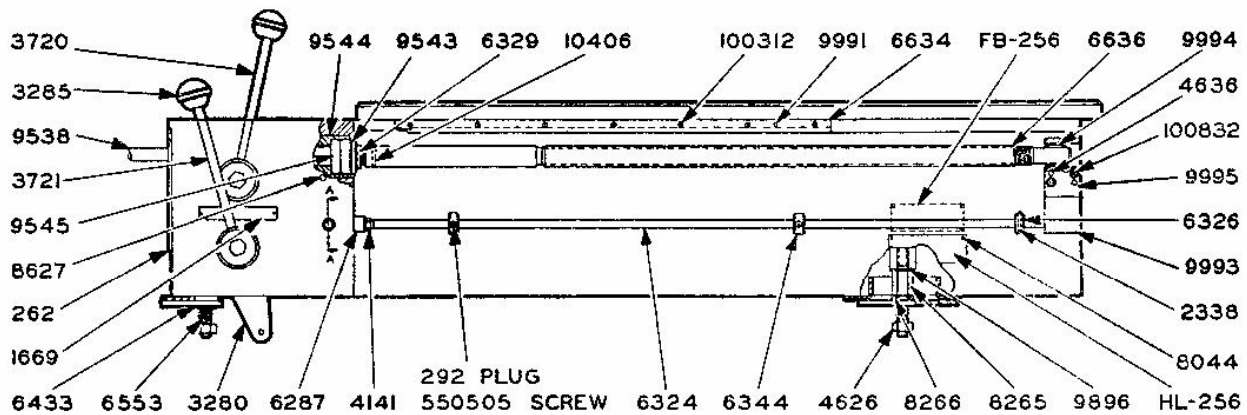
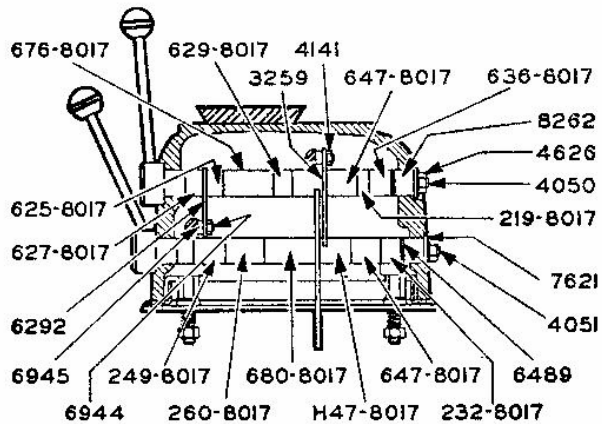
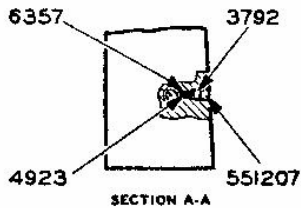
Part No.	No. Used	Part Name	Part No.	No. Used	Part Name	Part No.	No. Used	Part Name
401	1	Tailstock Body	1467	1	Nut Plug	8298	1	Clamp Bolt
402	1	Feed Screw Nut	1552	1	Binding Bolt	8759	1	Friction Spring
403	1	Feed Screw	1554	1	Binding Nut	9094	1	Locking Plug
405	1	Spindle	1759	1	Key	9244	1	Clamp Bolt Washer
407	1	Dial Bushing	4630	1	Stop Pin	9480	2	Gibs
410	1	Handwheel	4638	1	Handle Stop Pin	9712	1	Retaining Ring
418	1	Lock Handle	6504	1	Handwheel Bearing	10028	1	Spacer
421	1	Discharge Plug	6815		Binding Nut Shim	10335	1	Dial and Support Assembly
422	1	Center Assembly	6819		Handwheel Shim	100308	1	Handle Screw
426	1	Handwheel Nut	7859	1	Friction Plug	100310	4	Gib Screws
483	1	Plug	8260	1	Dial Bushing Plug	550304	2	Set Screws

WHEN ORDERING, GIVE PART NUMBER, NAME OF PART, QUANTITY WANTED AND SERIAL NUMBER WHICH IS STAMPED ON HEADSTOCK FRAME

HARDINGE BROTHERS, INC., ELMIRA, N. Y., U. S. A.

PARTS LIST FOR HARDINGE HLV PRECISION TOOL ROOM LATHE

BED



Part No.	No. Used	Part Name	Part No.	No. Used	Part Name	Part No.	No. Used	Part Name
HL-256	1	Front Name Plate	6329	1	Bearing Nut	680-8017	1	Spacer
FB-256	1	Rear Name Plate	6344	2	Stop Collars	8044	10	Escutcheon Pins
262	1	Bed	6357	1	Plunger	8262	2	Rear Bushings
292	2	Plugs	6433	3	Washers	8265	3	Hold Down Studs
1669	1	Low-Stop-High Plate	6489	1	Shim Washer	8266	3	Bed Washers
2338	1	Taper Pin	6553	3	Springs	8627	1	Pin
3259	1	Reverse Lever	6634	1	Rack	9538	1	Shaft Extension
3280	1	Speed Lever	6636	1	Lead Screw	9543	1	Bushing Nut
3285	2	Knobs	6944	2	Block Screws	9544	1	Bushing
3720	1	Reverse Lever Assembly	6945	2	Lever Blocks	9545	1	Bearing
3721	1	Speed Lever Assembly	7621	2	Washers	9896	1	Shim Washer
3792	1	Plunger Screw	H47-8017	2	Spacers	9991	2	Dowels
4050	1	Reverse Shaft	219-8017	1	Spacer	9993	1	Lead Screw Bracket
4051	1	Speed Shaft	232-8017	1	Spacer	9994	1	Rear Bearing
4141	3	Nuts	249-8017	1	Spacer	9995	1	Shim
4626	5	Nuts	260-8017	1	Spacer	10406	1	Lead Screw Pin
4636	2	Dowels	625-8017	2	Spacers	100312	7	Screws for Rack
4923	1	Spring	627-8017	1	Spacer	100832	2	Bracket Screws
6287	1	Stop Rod Extension	629-8017	1	Spacer	550505	2	Collar Screws
6292	1	Lower Arm	636-8017	1	Spacer	551207	1	Lock Screw
6324	1	Stop Rod	647-8017	2	Spacers			
6326	1	Safety Collar	676-8017	1	Spacer			

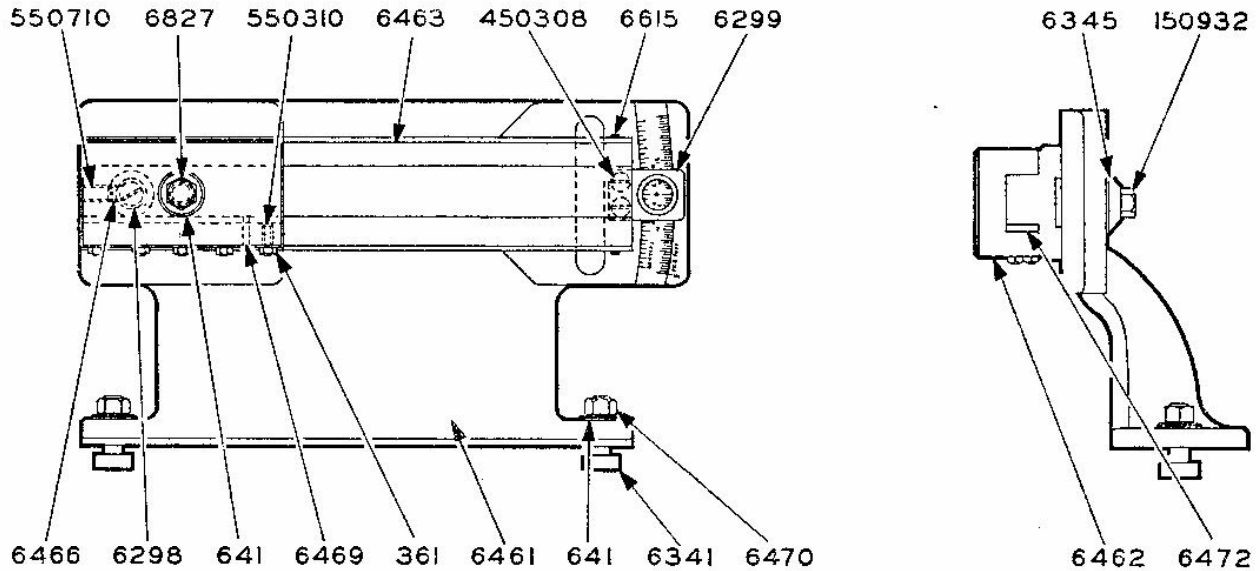
WHEN ORDERING, GIVE PART NUMBER, NAME OF PART, QUANTITY WANTED AND SERIAL NUMBER WHICH IS STAMPED ON HEADSTOCK FRAME

HARDINGE BROTHERS, INC., ELMIRA, N. Y., U. S. A.

PARTS LIST

FOR HARDINGE HLV PRECISION TOOL ROOM LATHE

TAPER ATTACHMENT



Part No.	No. Used	Part Name	Part No.	No. Used	Part Name
361	5	Gib Screw Nuts	6469	2	Dowel Pins
641	3	Washers	6470	2	Draw Bolt Nuts
6298	1	Swivel Stud	6472	1	Gib
6299	1	Plate	6615	2	Pins
6341	2	Draw Bolts	6827	1	Lock Bolt
6345	1	Clamping Washer	150932	1	Lock Screw
6461	1	Bracket	450308	2	Plate Screws
6462	1	Shoe	550310	5	Gib Screws
6463	1	Slide	550710	1	Stud Screw
6466	1	Plug			

WHEN ORDERING, GIVE PART NUMBER, NAME OF PART, QUANTITY WANTED AND SERIAL NUMBER WHICH IS STAMPED ON HEADSTOCK FRAME

HARDINGE BROTHERS, INC., ELMIRA, N. Y., U. S. A.

